

Annual Report of Production 2007

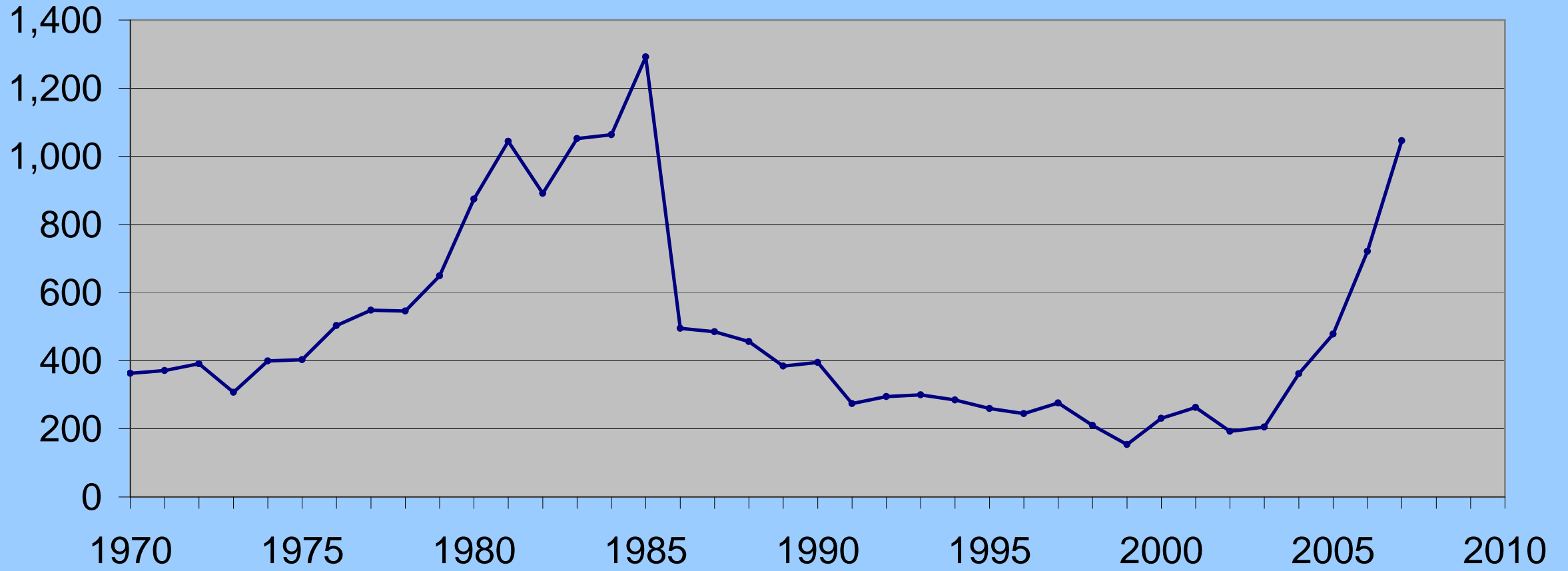
Arkansas Oil and Gas Commission
Lawrence E. Bengal, Director

Table of Contents

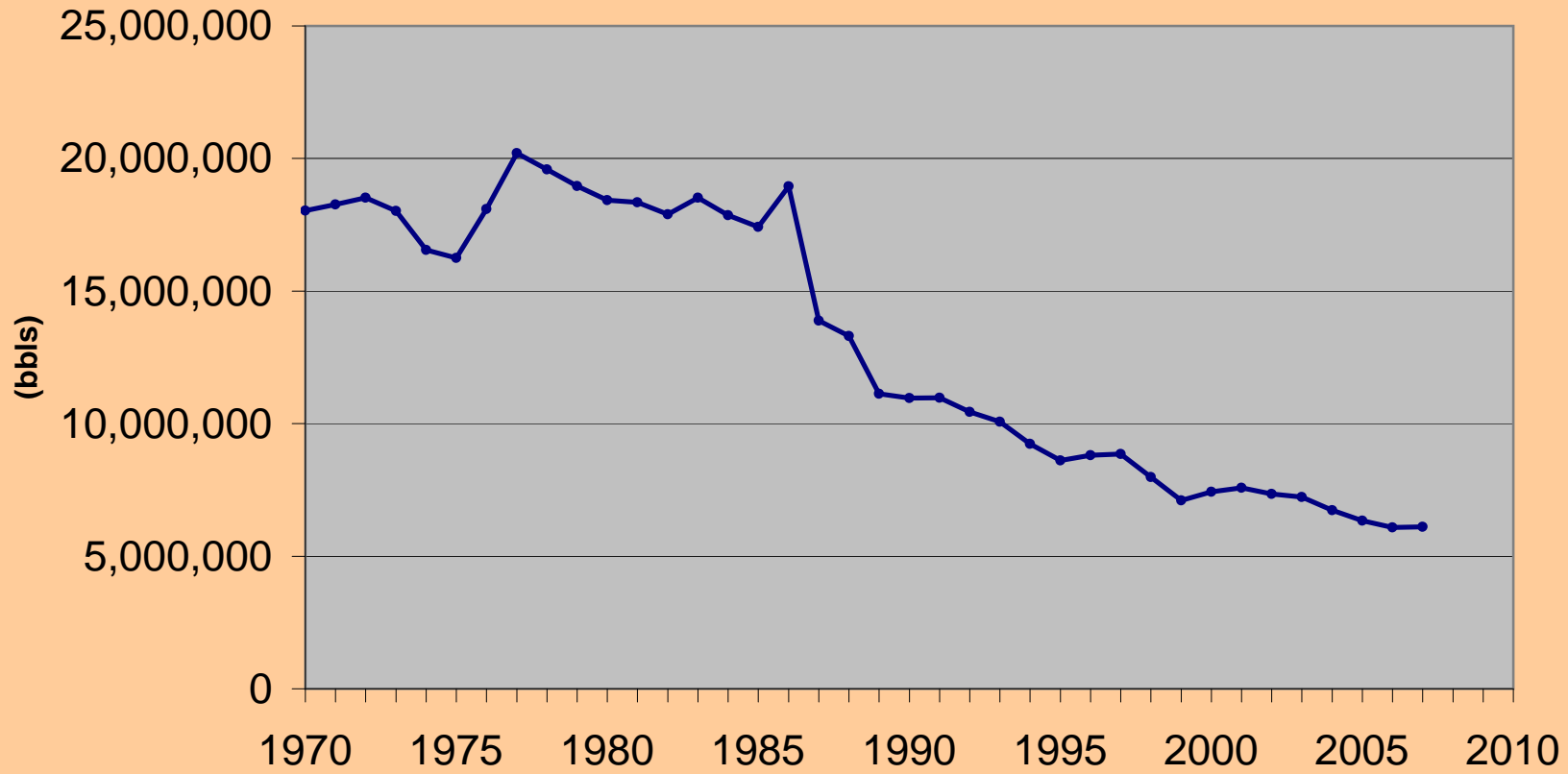
Informational Graphs	3
Report of Secondary Recovery Projects.....	10
South Arkansas Production Data	15
North Arkansas Production Data.....	40
Arkansas Brine Production	47
Brine Production 2006 By Field.....	48

Informational Graphs

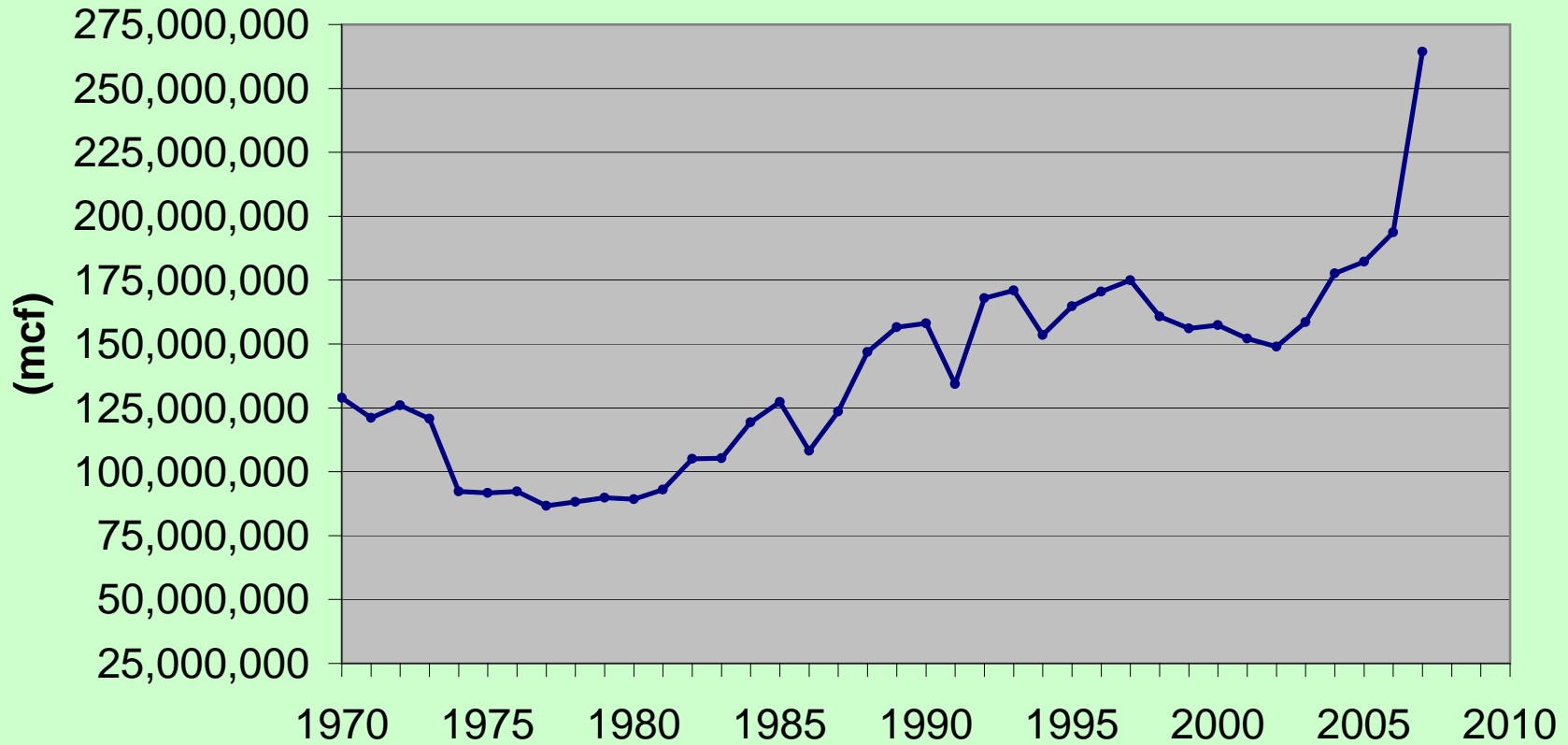
Annual Drilling Permits Issued



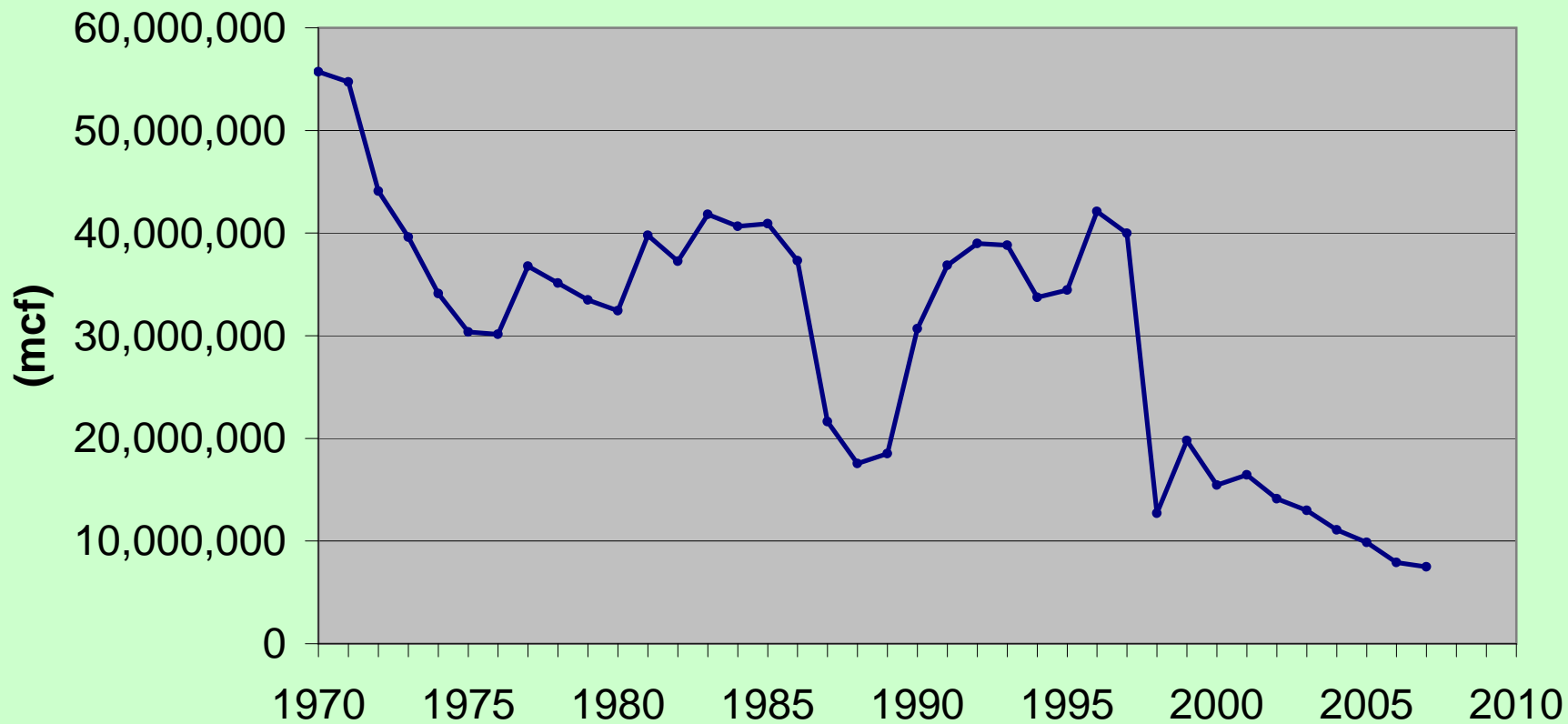
Annual Oil Production



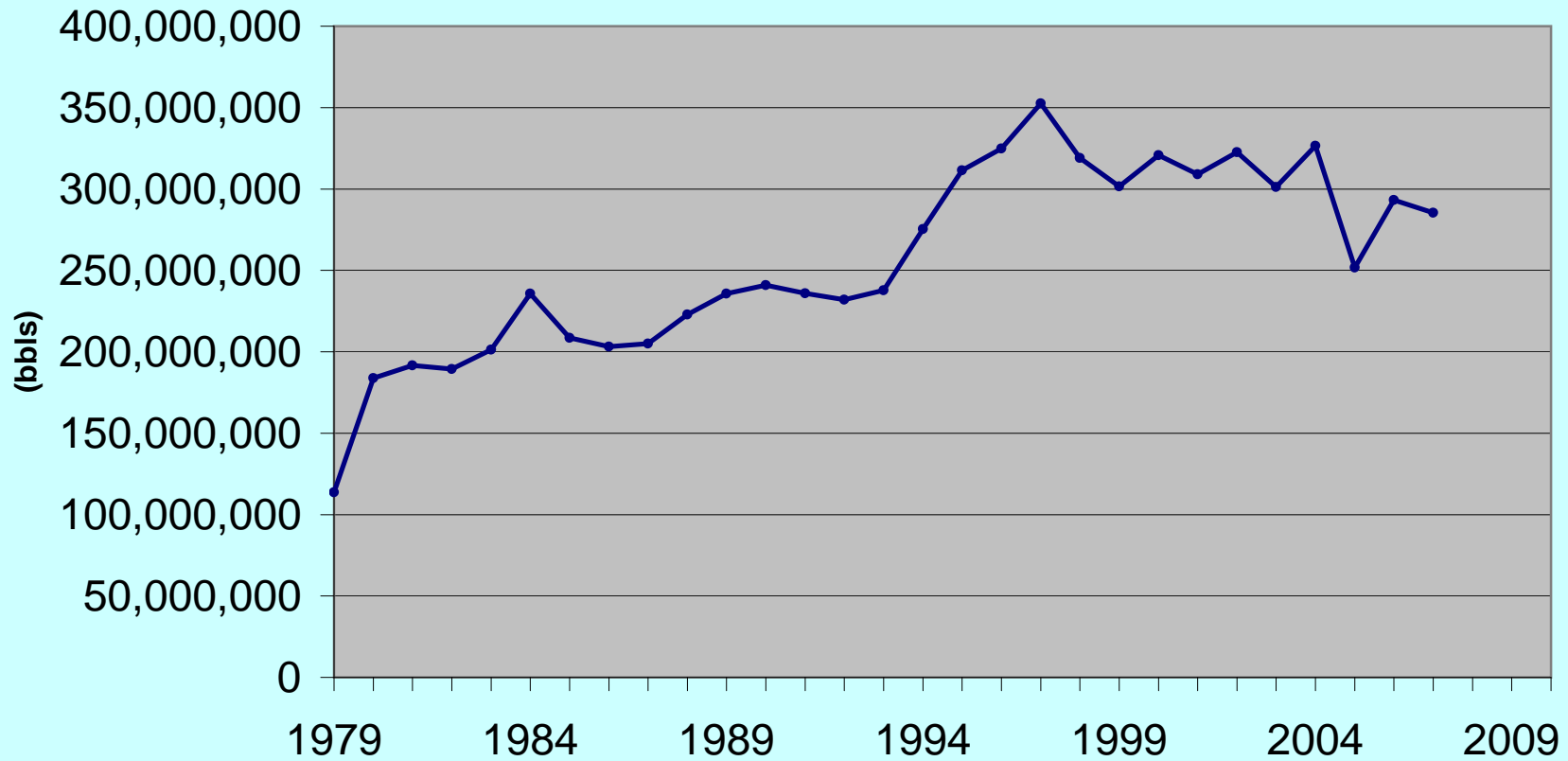
Annual North Arkansas Gas Production



Annual South Arkansas Gas Production

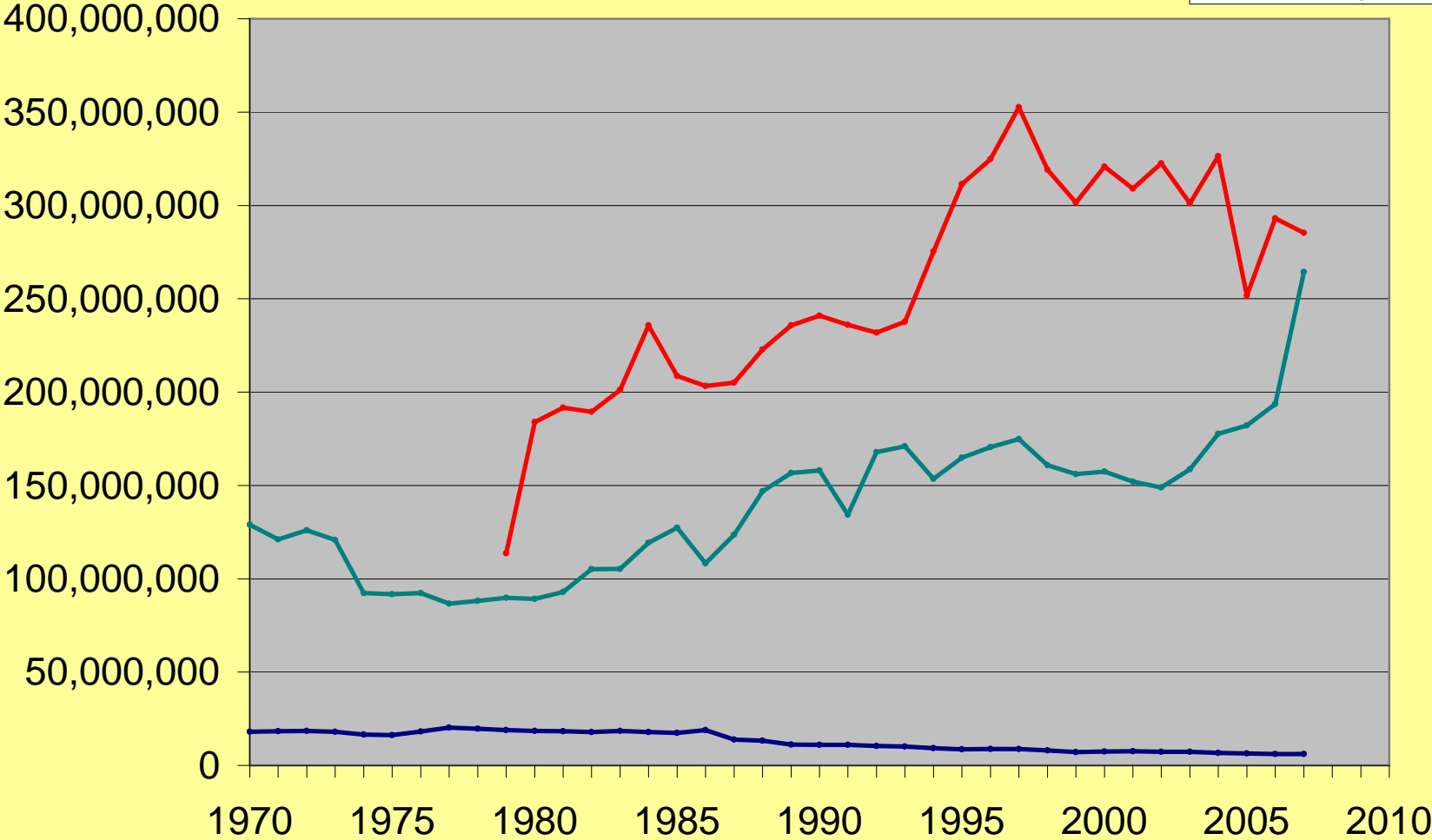


Annual Brine Production



Total Oil, Brine, Gas Production

- Oil (bbls)
- Gas (mcf)
- Brine (bbls)



Report of Secondary Recovery Projects

PRESSURE MAINTENANCE AND SECONDARY RECOVERY AND UNITIZED PROJECTS IN SOUTH ARKANSAS

FIELD/ RESERVOIR	YEAR COUNTY	DATE DISCOVERED	DATE UNITIZED	ORDER NUMBER	DATE OF INJECTION	FLUID INJECTED	ACRES	PAY THICKNESS ft.	POROSITY %	PERME- ABILITY md.	CONNATE WATER %	OIL IN PLACE MBbls.	RECOVERY		ANNUAL OIL Bbls.	ANNUAL GAS MCF	CUMMULATIVE OIL Bbls.	CUMULATIVE GAS MCF	
													PRIMARY %	SECONDARY %					
BODCAW																			
Kilpatrick	Nevada	1950	9-1-74	40-74		Water	410	13.0	20.0	150	38	3,809	27	30	2,973		233,486		
BUCKNER	Columbia & Lafayette	1997	6-1-97	24-97			2160								37,798		588,993		
BUENA VISTA																			
Buckrange	Ouachita	1952	6-1-64	24-64	6-23-64	Water	400	5.0	34.1	331	35	1,532	21	45			1,245		
CAMP CREEK																			
Blossom	Union	1959	11-7-62	45-62	1-5-63	Water	440	4.0	27.0		31	2,313	25	35	3,567		58,530		61
CATESVILLE																			
Cotton Valley																			
& Jones	Union	1950	8-1-56	22-56		None	1505	5.0	27.0		50	9,719	20	25	3,285		1,535,541		231,084
Smackover	Union	1950	8-1-56	22-56		None	435	6.0	24.0		34	2,096	25	35			588,952		
CHALYBEAT SPRINGS																			
Smackover	Columbia	1972	11-24-75	57-75		Gas	6144	43.0	14.0	156	30	133,681	22	37	2,761	157,612	3,427,211		35,253,845
CHAMPAGNOLLE LANDING																			
Baker	Union	1958	9-1-75	45-75		Water	1120	7.0	31.0	2,661	35	7,786	23	40	14,516		936,786		
CHARIVARI CREEK																			
Nacatoch	Bradley	1964	5-1-84	139-84	10-1-84	Water	549	15.2	32.0	222	50	5,894	8	12	14,928		444,924		
CHRISTMAS																			
1st Sturgis	Miller	1957	2-1-67	3-67	2-1-67	Water	410	8.5	24.8	659	39	2,200	10	19	791		301,891		
DAYS CREEK																			
Smackover	Miller	1973	2-1-79	5-79	8-1-79	Water	720	72.0	20.0		20	15	34	44	12,245		4,173,550		2,894,707
DORCHEAT-MACEDONIA																			
Cotton Valley	Columbia	1939	4-6-43	3-43		None	1120	60.3	15.0	100	30	57,000			37,564	191,055	1,741,955		8,318,824
FOUKE																			
Beauford	Miller	1940	4-1-65	13-65	4-27-65	Water	520	15.0	25.6	1,194	18	4,800	22	32	6,598		1,049,808		
1st Tokio	Miller	1955	12-1-72	53-72		Water	340	10.0	34.5	244	37	2,282	26	37	676		213,546		
1st Sturgis Sand															1,189		15,154		
1st Sturgis-C	Miller	1940	8-1-54	27-54	9-12-54	Water	1820	17.0	25.0	1000	35	35,462	40	50			1,643,486		
Nesbitt "A"	Miller	1940	1-24-62	4-62	4-18-62	Water	160	11.0	23.0	250	15	1,010	20	32	-		492,903		
1st Stur. SUSW	Miller	1941	7-22-70	34-70	9-21-70	Water	400	11.0	30.8	1,104	13	4,116	28	48			362,061		
PSU STURGIS "C"															12,772		63,117		
FOUKE N.																			
Tuscaloosa	Miller	1951	7-11-63	33-63	10-2-63	Water	160	4.0	31.1	568	46	587	21	41	8,966		243,344		
GRAYSON																			
Smackover	Columbia	1993	7-1-95	41-95	10-25-95	Gas & Water	1240	100	19.0	400	34	34,066	25	45	604,442	877,098	12,791,868		8,673,870
HAYNESVILLE																			
Pettet	Columbia	1942	5-1-44	7-44	7-1-46	Water	3426	9.4	18.0	0-50	22	26,375	28	28	-		6,049,521		
Smackover "B"	Columbia	1959	12-1-64	68-64		Gas	112	5.0	12.9	152	23	27	19	42	25	57,754	32,131		386,499
HORSEHEAD																			
Pettet	Columbia	1952	4-1-57	17-57	12-26-57	Water	2919	7.5	18.0	0-50	22	17,828	24	35	1,168		2,306,337		
IRMA																			
Nacatoch	Nevada	1921	6-1-67	42-67	7-21-67	Water & Steam	1840	13.0	40.0	300	33	51,500			27,021		1,347,675		
KELLY BAYOU																			
Jeter	Miller	1962	11-21-63	56-63	12-1-64 5-22-64	Gas & Water	4320	8.0	22.0	100	29	29,307	24	35			4,451,837		6,182,302
KERLIN																			
Pettet	Columbia	1972	12-31-82	224-82	5-1-83	Water	5120	4.0	14.8	22	29	9,648	17	27	41,657		2,129,425		
KIBLAH																			
Gloyd															965		15,905		
KRESS CITY																			
Ford	Lafayette	1957	11-1-80	134-80	1-1-81	Water	1590	3.8	12.0	48	15	2,000	24	35	2,649		262,395		124,721

PRESSURE MAINTENANCE AND SECONDARY RECOVERY AND UNITIZED PROJECTS IN SOUTH ARKANSAS

FIELD/ RESERVOIR	YEAR COUNTY	DATE DISCOVERED	DATE UNITIZED	ORDER NUMBER	DATE OF INJECTION	FLUID INJECTED	ACRES	PAY THICKNESS ft.	POROSITY %	PERME- ABILITY md.	CONNATE WATER %	OIL IN PLACE MBbls.	RECOVERY		ANNUAL OIL Bbls.	ANNUAL GAS MCF	CUMMULATIVE OIL Bbls.	CUMULATIVE GAS MCF
													PRIMARY %	SECONDARY %				
LAKE ERLING Smackover															3,199	83,949	44,618	1,202,269
LAKE ERLING SOUTH Smackover	Lafayette	1985	12-1-92	85-92	8-1-93	Gas	1600	124.0	9.0		22	5,362	22.2	21	1,775	43,177	776,748	11,635,289
LAPILE Cotton Valley	Union	1989	8-1-89	57-89	8-1-90	Water	285	5.3	23.6	51	40	1,521	35	45	2,750		211,463	
LEWISVILLE Lime	Lafayette	1969	5-1-75	21-75	8-1-75	Gas & Water	458	140.0	24.0	44	30	18,130	25	39	60,384	253,980	4,494,274	9,094,058
Lewisville Old Town Tuscaloosa																	916	
LEWISVILLE W. Smackover	Lafayette	1971	9-1-86	145-86	9-1-86	Water	160	25.0	29.6	16	11	6,040	17	32	7,953	3,248	440,222	178,939
LICK CREEK Meakin	Bradley	1957	1-1-75	62-74	2-1-76	CO ₂	1533	12.0	33.0	1,200	32	23	18	22			2,536,665	
LISBON N.W. Blossom	Union	1957	12-1-64	69-64	1-1-63	Water	500	9.0	27.00	526	31	7,332	25	35	15,673		1,424,852	
MAGNOLIA Smackover	Columbia	1938	4-1-56	7-56	8-21-64 1-31-45	Gas Water	4494	106.0	16.5	1,085	30	288,200	49	60	210,218	306,483	86,780,119	27,994,260
MAYTON Paluxy	Miller	1967	1-27-71	9-71	7-1-62	Water Gas	220	12.0	26.0		35	1,762	9	20	-		255,108	
MIDWAY Smackover	Lafayette	1942	2-1-56	1-56	4-1-43	Water	2520	62.8	26.0	150	20	150,001	40	50	93,517	53,644	49,104,442	24,048,069
MIDWAY WEST Smackover	Lafayette	1953	1-18-61	5-61	2-15-61	Water	240	27.5	25.4	10	28	8,327	15	27	2,647		2,416,638	
MCKAMIE-PATTON Smackover	Lafayette	1940	12-1-48	33-48	8-1-49	Gas	6580	122.0	15.0	459	36	31,878	24 O 60 C	36 73	32,094	134,363	32,747,885	585,633,076
James Lime	Lafayette	1982	12-1-82	229-82	4-1-85	Water	3988	4.3	15.0	30	30	7,490	20	31	18,595		1,016,139	73,660
PLAINFIELD Cotton Valley	Columbia		7-1-2004	47-2004-05			1122	11.4	13.0	20		2,258	24	39	3,157		20,017	611
RED ROCK Pettet	Columbia	1975	7-1-85	188-85	1-1-86	Water	1336	5.1	15.5	14	24	5,433	24	37			173,230	
RITCHIE Baker	Union	1963	12-18-68	65-68	1-12-69 5-1-70	CO ₂ Water	550	7.0	30.7	2,754	20	3,250	14	30	1,458		785,118	
RODESSA Gloyd	Miller	1937	6-1-88	37-88			1594	15	20	79	26	19,400	25	36	29,490		581,481	
SANDY BEND Nacatoch	Union	1947	6-1-67	33-67		None	1000	5.0	25.0		50	25,000	11	17	7,126		1,198,805	
SHULER Hill															8,512		134,983	6
Pettet				1-42											53,400		1,067,766	23,312
C.V.				1-42											46,273		6,433,018	217,590
Jones	Union	1937	2-15-41	6-41	6-1-44	Water	4216	33.4	20.2	355	30	101,471	36	70	106,384	5,708	64,319,152	175,197,107
SMACKOVER Nacatoch - (T.C. Murphy)	Union	1922	5-21-69	22-69	9-1-69	Steam	40	110.0	20.0	2,000	25	4,814	20	25	7,266		438,349	
Nacatoch-STRU	Union	1922	8-1-69	30-69	12-1-69	In situ comb.	160	54.0	20.0	2,000	25	9,452	20	27	5,388		447,775	
					9-1-72	Water												
Nacatoch-985	Ouachita	1922	9-16-70	49-70	3-3-71	Steam	985	34.0	36.0	2,000	30	61,199			124,073		12,349,161	
Meakin-NAC O.	Ouachita	1923	7-28-71	40-71	10-3-71	Water	130	13.0	30.0		35	2,131	15	30	2,018		102,070	
Meakin-Wells	Ouachita	1923	2-1-73	5-73	4-9-71	Water	660	13.0	30.0		35	10,819	15	30			350,305	
SPRINGHILL Pettet	Lafayette		9-1-2004	102-2004-08			1145								90,285	102,997	353,536	868,561

PRESSURE MAINTENANCE AND SECONDARY RECOVERY AND UNITIZED PROJECTS IN SOUTH ARKANSAS

FIELD/ RESERVOIR	COUNTY	YEAR DISCOVERED	DATE UNITIZED	ORDER NUMBER	DATE OF INJECTION	FLUID INJECTED	ACRES	PAY THICKNESS ft.	POROSITY %	PERME- ABILITY md.	CONNATE WATER %	OIL IN PLACE MBbls.	RECOVERY		ANNUAL OIL Bbls.	ANNUAL GAS MCF	CUMMULATIVE OIL Bbls.	CUMULATIVE GAS MCF	
													PRIMARY %	SECONDARY %					
STAMPS																			
Paluxy	Lafayette	1958	3-1-72	4-72	3-1-72	Water	149	10.6	25.0	208	35	638	35	45				71,178	
STATELINE																			
Smackover	Union	1990	4-1-93	21-93			1048	8	20	90	20	1,559	62	66	4,197			858,243	
STEPHENS																			
Buckrange-																			
Milam	Columbia	1922	1-27-60	8-60	6-1-60	Water	480	5.0	30.6	92	43	3,082	31	53				214,698	
Buckrange-																			
Sherry	Ouachita &																		
	Columbia	1922	12-1-65	76-65	3-19-65	Water	2865	6.0	30.6	92	43	21,144	31	53				44,165	
Buckrange I	Ouachita &																		
	Columbia	1922	8-1-57	38-57	1957	Water	940	7.0	30.6	92	43	8,449	31	53				903,022	
Buckrange II	Ouachita &																		
	Columbia	1922	5-14-63	24-63	6-1-63	Water	2390	7.0	30.6	92	43	21,481	31	53				2,832,221	
Buckrange III	Ouachita &																		
	Columbia	1922	11-1-65	72-65	11-3-65	Water	950	6.0	30.6	92	43	7,011	31	53				1,006,381	
Buckrange-																			
Murphy	Columbia	1922	10-18-62	37-62	11-62	Water	210	6.0	30.6	92	43	1,554	31	53				546,556	
Buckrange-																			
R.E. Williams	Columbia	1922	4-1-66	13-66	6-1-67	Water	360	5.6	30.6	92	43	590	31	53				156,382	
Buckrange-																			
Witt	Ouachita	1922	1-23-62	7-63	4-63	Water	530	7.0	30.6	92	43	4,764	31	53				620,540	
Buckrange																			
Miller Prod/Buckrange																			
Buckrange-																			
Wepfer	Columbia	1922	10-1-69	59-69		Water	200	6.0	30.6	92	43	540	31	53	740			68,211	
Buckrange-																			
Hall	Columbia &																		
	Nevada	1922	3-1-64	4-64	7-1-64	Water	317	4.0	30.6	92	43	1,628	31	53				69,822	
Hogg	Ouachita	1949	3-1-50	8-50	5-12-50	Water	510	15.4	28.0	2,970	30	7,759	23	60	10,985			519,293	
ST. MARY																			
Hill	Lafayette	1979	9-1-88	82-88	9-1-88	Water	240	4.7	25	43	17	692	48	55	2,767			95,401	
ST. MARY WEST																			
Cotton Valley																			
Texarkana																			
Pettet	Miller			40-98			320	9.0	14.4	20	48	562	28	52	7,083			87,249	
TROY																			
Nacatoch	Nevada	1936	7-1-67	49-67	1968 7-1-67	Water Steam	997	13.2	40.0	3,000	33	27,250	11	25	17,938			869,059	
Tokio	Nevada	1936	7-1-67	50-67		In Situ Comb.	542	13.0	32.0	1,000	36	10,100	50	53	7,337			784,792	
Blossom	Nevada	1956	4-17-63	13-63	12-1-63	Water	570	6.0	30.0E		35	1,895	30	41	2,706			704,957	
URBANA																			
Travis Peak	Union	1951	12-1-58	46-58	12-10-58	Water	180	5.6	28.0	424	35	1,186	16	33	16,453	345		369,750	1,342
Sand Unit (3500)																			
WALKER CREEK																			
Smackover	Columbia &																		
	Lafayette	1968	5-1-74	20-74		Gas	14,840	50.0	11.2	219	27	237,120	19	38	37,473	378,811		29,906,148	167,082,997
WALNUT HILL																			
Mitchell	Lafayette	1957	3-1-90	20-90	4-1-90	Water	1,000	3.7	19.0	104	25	1,318	28	44	2,166	3,536		268,376	30,477
WESGUM																			
Smackover	Ouachita	1971	4-1-75	10-75		Gas & Water	130	10.0	15.0		30	2,394	25	40	7,714	386		1,034,491	52,227

PRESSURE MAINTENANCE AND SECONDARY RECOVERY AND UNITIZED PROJECTS IN SOUTH ARKANSAS

FIELD/ RESERVOIR	COUNTY	YEAR DISCOVERED	DATE UNITIZED	ORDER NUMBER	DATE OF INJECTION	FLUID INJECTED	ACRES	PAY		PERME- ABILITY	CONNATE WATER	OIL IN PLACE MBbls.	RECOVERY		ANNUAL OIL Bbls.	ANNUAL GAS MCF	CUMMULATIVE OIL Bbls.	CUMULATIVE GAS MCF	
								THICKNESS ft.	POROSITY %				PRIMARY %	SECONDARY %					
WESSON																			
Buckrange & Blossom	Ouachita	1947	1-24-68	8-68	6-20-68	Water	880	55.0	4.3	30.0		40	7,394	30	53	-		693,545	
Buckrange	Ouachita	1947	1-24-68	67-67		Water	463	3.5	26.0		92	43	1,693	31	53			163,013	
Glen Rose	Ouachita	1945	8-1-66	46-66	4-18-66	Water	80	30.0	28.7		754	30	2,878	26	36			208,349	
Hogg (3150)	Ouachita	1946	7-1-48	21-48	9-1-48	Water	1,542	19.3	32.0		2,772	11	63,320	22	52	55,120	791	39,815,107	
Smackover	Ouachita	1967	4-8-70	12-70		Water	600	38.0	28.0		5	30	7,473	35	52	36,013		3,756,914	
WESSON N.																			
Buckrange & Blossom	Ouachita	1966	2-1-69	7-69	5-1-69	Water	440	7.0	30.5			42	3,067	25	41	-		231,168	
WILLISVILLE								5.0											
Nacatoch	Nevada	1951	9-1-69	51-69	11-5-69	Water	282	30.0	35.0		2,000	40	4,300	4	8	9,780		617,885	
WILLISVILLE W. Hogg	Nevada	1973	10-1-75	44-75	10-1-75	Water	100	8.0	32.0		800	30	1,537	30	45			131,067	
TOTAL																2,002,393	2,657,885	406,255,869	1,065,444,385

South Arkansas Production Data

SOUTH ARKANSAS RESERVOIR DATA

See last page for key to Abbreviations.

						PRODUCTION		
FIELD/ COUNTY	FORMATION	DEPTH (Ft.)	YEAR OF DISCOVERY	YEAR ABANDONED	API GRAVITY	2007	2007	CUMMULATIVE OIL (Bbls.)
						ANNUAL OIL (Bbls.)	ANNUAL GAS (MCF)	
AGNES ROAD	Smackover	6,690	1985	1995	37			23,308
Union								
AGNES ROAD NORTH	Cotton Valley	6,800	1989		45			33,358
Union								
ARKANA	Buckrange	2,730	1993		27			7,418
Lafayette	Tokio	2,986	1984		32	1,270		120,289
	Pettet	6,250	1983		41	596		65,221
	Cotton Valley	8,676	1981		48	3	450	70,540
	Haynesville	10,880	1983	1991 TA	52	1,838	47,944	9,124
	Smackover	11,316	1992		42	1,836		72,694
ARTESIAN	Meakin	2,560	1952		17	7,079		899,568
Calhoun								
ARTESIAN EAST	Blossom	2,854	1981	1992	14			2,202
Calhoun								
ARTEX	Paluxy	3,140	1980		26	4,655		291,516
Miller	Travis Peak	5,715	1979	1980				2,751
ASH BRANCH	Cotton Valley	6,800	1976	1993	39			36,210
Union								
ATLANTA	Pettet	4,620	1983		41	4,612		171,632
Columbia	Cotton Valley	7,210	1943		42	6,363	2,973	3,170,040
	Jones	8,120	1981	1990 TA	41			21,200
	Smackover	8,210	1938		46	6,920	44,313	20,920,126
	C.V. & Smk.	8,400	1987					14,856
	Nacatoch							1,901
ATLANTA EAST	Cotton Valley	7,768	1971		42			583,656
Columbia	Jones	8,628	1971	1971	42			9,631
AURELLE	Nacatoch	2,303	1980		24	2,178		61,454
Union								
BARLOW BRANCH	Smackover	7,810	1974	1990 TA	38			242,575
Columbia								
BEAR CREEK	Travis Peak	3,800	1961		44	2,370		407,824
Union	Smackover	6,317	1967		29	1,505		1,287,157
BEECH CREEK	Tuscaloosa		1949	1955				2,719
Union	Cotton Valley	6,604	1972	1986 TA	40			27,081
BEECH CREEK WEST	Pettet	3,946	1984		44	6,008	8,220	779,252
Union	Cotton Valley	6,700	1983		43	-		346,977
BEECH HILL	Smackover	7,214	1978	1975	36			132
Union								
BENJAMIN LAKE	Meakin	2,550	1959		18	4,206		421,013
Union								
BERRY	Graves	2,627	1975		14	2,132		128,228
Union								
BERT CREEK	Smackover	7,210	1978		38			411,280

See last page for key to Abbreviations.						PRODUCTION		
FIELD/ COUNTY	FORMATION	DEPTH (Ft.)	YEAR OF DISCOVERY	YEAR ABANDONED	API GRAVITY	2007 ANNUAL OIL (Bbls.)	2007 ANNUAL GAS (MCF)	CUMMULATIVE OIL (Bbls.)
Union	Cotton Valley	5,322	1991		40.1			173,792
BETHEL CHURCH	Smackover	7,313	1978	1987	42			48,665
Union								
BETHLEHEM	Rodessa	3,370	1966	1992	42			67,178
Union								
BIG BRANCH	Tuscaloosa	2,750	1982	1997	21			3,991
Lafayette	Paluxy	2,973	1981	1997	25			27,895
BIG CREEK	Smackover	7,900	1974		34	-		214,698
Columbia								
BLOOMBURG	Smackover	10,446	1984	1986	54			5,076
Miller								
BODCAW	Kilpatrick	2,550	1950		30	2,973		1,253,744
Nevada	Hill	2,850	1950		29	1,103		446,709
BODCAW CREEK	Pettet	5,986	1984	1987	38			4,327
Lafayette								
BOGGY BOTTOM	Tokio	2,390	1984	1985	37			497
Union	Tuscaloosa	3,150	1966	1985	52			122,248
	Hogg	3,785	1965		47	965		211,795
BOGGY CREEK	Paluxy	3,859	1981		32	9,403		487,120
Miller								
BOIS D'ARC	Smackover	5,966	1972	1990	30			15,932
Hempstead								
BOLDING	Cotton Valley	4,145	1985	1990	52			29,907
Union								
BOYCE LAKE	Smackover	7,740	1981	1983	68			8,600
Miller								
BOYD	Smackover	6,588	1984	1996	70			17,480
Miller								
BOYD HILL	Smackover	6,622	1984	1996	11			19,496
Miller								
BRADLEY	Buckrange	2,773	1981		26	-		69,689
Lafayette	Buckrange (Old)	2,786	1925		26			207,419
BRADLEY SOUTH	Tokio					6,074		48,822
BRADLEY WEST	Hill	5,860	1955	1984	39			199,566
Lafayette	Mitchell	6,010	1954		44	1,800		4,786,011
	Pettet	6,670	1984	1988	35			5,847
BRAGG	Nacatoch	1,356	1982		16	1,110		17,370
Ouachita								
BRISTER	Smackover	8,501	1969	1982	71			87,775
Columbia								
BRUSHY LAKE	Paluxy	3,390	1965	1969	25			4,187
Lafayette								
BUCKNER	Tokio	2,503	1969	1970	14			60
Lafayette &	Hill	3,562	1963	1964	24			1,190
Columbia	Travis Peak	4,800	1946		34	34,157		7,663,220

See last page for key to Abbreviations.						PRODUCTION		
FIELD/ COUNTY	FORMATION	DEPTH (Ft.)	YEAR OF DISCOVERY	YEAR ABANDONED	API GRAVITY	2007 ANNUAL OIL (Bbls.)	2007 ANNUAL GAS (MCF)	CUMMULATIVE OIL (Bbls.)
	Smackover	7,160	1937		32	37,798		13,321,610
BUENA VISTA	Nacatoch	1,270	1956		14	6,360		280,384
	Ouachita	Buckrange	1,960	1952	26			310,968
BURDELL BRANCH	Kilpatrick	2,598	1975	1987	48			23,210
	Nevada							
BURNS POND	Smackover	7,450	1986		39	-		580,179
	Union							
BURNSIDE CREEK	Rodessa	3,354	1975		37			56,158
	Union	Travis Peak				90		2,987
CAIRO	Jones	7,650	1984	1990 TA	29	-		886
	Union	Smackover	7,740	1948	37	4,022	76,750	7,286,254
CAIRO EAST	Cotton Valley		1983	1983				107
	Union	Smackover	7,761	1980	1983	33		3,713
CALHOUN	Smackover	8,260	1944	1970	50			550,785
	Columbia							
CALION	Meakin		1957	1959				165
	Union	Graves	2,490	1952	15	2,260		338,508
		Blossom	2,600	1952	22	833		628,525
		Travis Peak	3,470	1957		6,024		669,137
		Cotton Valley	3,535	1983	31	5,960		249,058
		Nacatoch						4,497
CALVARY CHURCH	Cotton Valley	5,534	1975	1987	GAS			10,456
	Union							
CAMP CREEK	Meakin	2,310	1960		24	3,871		193,317
	Union	Blossom	2,650	1959	24	3,567		1,048,408
		Tokio	2,670	1980	29	14,717		695,480
CANFIELD	James	5,063	1982		40	1,263		96,408
	Lafayette	Cotton Valley		1952	1952			5,286
CAREYVILLE LANDING	Blossom	2,740	1962		19	22		110,441
	Bradley	Travis Peak	2,901	1966	1966 TA	20		7,388
		Cotton Valley	3,379	1960		19	6,755	1,048,373
CATESVILLE	Nacatoch		1994			-		184
	Union	Cotton Valley	6,422	1973	40	3,285		1,796,590
		Cotton Valley	6,500	1950	38			
		Cotton Valley	6,600		40			
		Cotton Valley	6,625		41			
		Jones	7,570		41			
		Smackover	7,700	1950	1976 TA	42	-	588,957
CENTER	Hogg	3,175	1953		30	6,268		2,853,028
	Ouachita							
CENTRAL CHURCH	Paluxy	3,264	1984		27	2,202		138,196
	Miller							
CHALYBEAT SPRINGS	Cotton Valley	8,843	1971	1976 TA	43			138,877
	Columbia	Smackover	10,126	1972	45	2,761	157,612	15,003,402
CHAMPAGNOLLE	Graves	2,580	1929		28	92,155		33,087,505

See last page for key to Abbreviations.						PRODUCTION		
FIELD/ COUNTY	FORMATION	DEPTH (Ft.)	YEAR OF DISCOVERY	YEAR ABANDONED	API GRAVITY	2007 ANNUAL OIL (Bbls.)	2007 ANNUAL GAS (MCF)	CUMMULATIVE OIL (Bbls.)
Union	Blossom	2,690	1928			382		712
	Tokio	2,780	1928			1,076		1,901
	Travis Peak	2,990	1927		26			
	Travis Peak	3,629	1964		28	233		155,359
	Cotton Valley	3,995	1965		36	10,396	252	2,517,514
	Cotton Valley	4,175	1970		38			
	Smackover			1946				
MOODY AREA	Travis Peak			1973				4,618
CHAMPAGNOLLE LNDG	Baker	2,602	1958		16	14,516		3,145,688
Union								
CHARIVARI CREEK	Nacatoch	2,380	1963		19	14,928		777,629
Bradley								
CHICKEN CREEK	Tokio	3,210	1966	1967	21			1,570
Miller	Paluxy	3,886	1986		33.6	-		67,982
CHICKEN CREEK S.W.	Paluxy	3,760	1996		30	1,206		21,170
Miller								
CHRISTMAS	Tuscaloosa	3,650	1961			1,210		72,853
Miller	1st Sturgis	3,112	1957			791		1,271,591
	2nd Sturgis	3,175	1960	1977 TA				74,349
	3rd Sturgis	3,332	1960	1964 TA				6,259
	4th Sturgis	3,345	1957	1962 TA				48,469
	Paluxy	3,120	1983		31	2,825		11,325
	Hill	4,620	1984		46			73,433
CLEAR CREEK	Tokio	2,432	1956	1957	15			6,015
Lafayette								
CLEVELAND BRANCH	Smackover					40,555	2,473	71,710
Lafayette								
COLLEGE HILL	Smackover		1948	1949				5,755
Columbia								
COLUMBIA	Pettet	4,559	1978		40	1,642		108,777
Columbia	Smackover	8,030	1942	1950	65			10,401
CORINTH CHURCH	Smackover	10,126	1972	1975	46			7,521
Columbia								
CORNIE CREEK	Cotton Valley	7,166	1972	1994	40			130,228
Union	Cotton Valley	7,230	1975		40			
	Cotton Valley	8,621	1976		62			
CORNISH BRANCH	Mitchell	5,700	1964		40	5,938		1,313,047
Lafayette	Cotton Valley	8,818	1975	1979	50			8,604
	Haynesville					1,643	14,811	2,244
CRAIG	Arkadelphia	2,125	1965	1984	42			4,629
Union	Tuscaloosa	3,030	1966	1987	31			28,687
CRAIN CITY	Baker	2,642	1976		16	5,100		407,010
Union								
CROSS COUNTRY SL.	Baker	2,570	1959		16			1,093,391
Calhoun	Graves	2,596	1980	1989 TA	16			8,435

See last page for key to Abbreviations.						PRODUCTION		
FIELD/ COUNTY	FORMATION	DEPTH (Ft.)	YEAR OF DISCOVERY	YEAR ABANDONED	API GRAVITY	2007 ANNUAL OIL (Bbls.)	2007 ANNUAL GAS (MCF)	CUMMULATIVE OIL (Bbls.)
	Travis Peak	3,040	1985		29	303		48,606
CROSSETT	Cotton Valley	3,726	1980		18	7,513		233,245
	Ashley							
CUMMINGS	Smackover	8,681	1977	1993	66			235,825
	Miller	Rodessa	5,141	1997	30	2,561	689	114,346
CURTIS CREEK	Hill	3,118	1981		39	8,815		1,804,187
	Union	Tuscaloosa	3,106	1989	43	220		72,648
CYPRESS	Haynesville	10,704	1996		60	25,009	448,789	191,054
	Columbia							
CYPRESS CREEK	Graves	2,755	1967	1984 TA	16			83,915
	Union	Blossom	2,840	1968	21	1,544		78,963
		Tokio	2,875	1964	26	2,452		246,023
		Travis Peak	2,900	1961	30	3,121		886,167
CYPRESS LAKE	Paluxy	4,690	1985	1988		4,246	1,753	207,333
	Miller	Paluxy	4,100	1995				77,487
	Lafayette & Miller	Paluxy-Stewart						
		Kilpatrick		1963				707
		Hill	4,690	1958	1960			5,321
CYPRESS LAKE SOUTH	Ford	8,359	1985	1985	63			
	Miller							16,833
CYPRESS LAKE WEST	Smackover	8,359	1985	1993	63			20,539
	Miller							
DAYS CREEK	Smackover	8,152	1972		47	12,675	0	7,968,490
	Miller	Cotton Valley	7,362	1992	43	0	0	31,623
DAYS CREEK SOUTH	Smackover	8,520	1986	1995	68			4,540
	Miller	Cotton Valley	7,584	1994				898
DICKSON ROAD	Smackover	7,932	1980	1988	35			26,545
	Columbia							
DODDRIDGE	Pettet	6,875	1987		41	0	0	53,351
	Miller							
DODDRIDGE WEST	Anhydrite	6,150	1959	1959	36			954
	Miller							
DOOLEY CREEK	Buckrange	2,770	1954		28			336,909
	Lafayette	Smackover	10,935	1970	1972	48		30,323
DORCHEAT-MACEDONI	Rodessa	4,500	1955		33	17,558	288	1,660,971
	Columbia	Rodessa	4,674	1988				
		James	4,775	1957		-	0	338,540
		Pettet	5,172	1970	41	21,001	-	1,032,141
		Travis Peak	5,944	1950	43	1,646	35,247	1,018,236
		Travis Pk/Cotton Val.				-	-	5,834
		Cotton Valley	8,010	1943	38-72	268,776	822,548	35,583,724
		Buckner	7,914	1984	1985	46		270
		Smackover	8,870	1939		10,478	8,741	9,563,784
DRY CREEK	Graves	2,740	1986	1992	20			619
	Union	Tokio	2,910	1958	1958	32		1,826

See last page for key to Abbreviations.						PRODUCTION		
FIELD/ COUNTY	FORMATION	DEPTH (Ft.)	YEAR OF DISCOVERY	YEAR ABANDONED	API GRAVITY	2007 ANNUAL OIL (Bbls.)	2007 ANNUAL GAS (MCF)	CUMMULATIVE OIL (Bbls.)
DRY FORK	Tokio	3,200	1989		41			92,490
Lafayette								
DUTY	Mitchell	5,768	1979		43			631,092
Lafayette								
EL DORADO EAST	Nacatoch (Old)	2,170	1921		20	11,650		12,376,936
Union	Meakin	2,500	1956	1969	23			14,571
	Blossom	2,750	1953	1968	24	0	-	7,667
	Tokio	2,919	1986			3420	339	3,800
	Saulsbury	2,935	1954	1967	27	0	-	9,339
	Travis Peak	4,000	1970		20	977	-	24,969
AMASON AREA	Blossom							21,694
	Graves			1958				19,844
	Saulsbury	2,935	1954	1990 TA	27	0	-	330,167
	Travis Peak	2,962	1971		44	221	-	134,768
EZZELL AREA	Nacatoch	2,130	1951		21	612	-	38,106
	Meakin	2,500	1956		23	4,296	372	67,323
	Graves	2,675	1952		23	3,311	277	24,576
	Blossom	2,750	1953		24	1,193	109	57,037
	Tokio	2,880	1951		21	1,316	0	6,883
	Hogg	3,400	1956	1986	34			23,135
	Saulsbury	2,925	1951		26	4,988	0	54,113
	Travis Peak	2,962	1951		29	39,155	65	91,251
	Cotton Valley	5,951	1969		36	10,998	964	1,979,871
	Smackover	6,210	1969		22	826	-	393,888
SAULSBURY AREA	Blossom			1966				247
	Saulsbury	2,935	1951	1990 TA	27	0	-	412,264
	Nacatoch							77,713
EL DORADO SOUTH	Nacatoch	2,200	1920		32	11,330		56,445,245
Union	Tokio	2,875	1957		32	0	-	46,660
	Cotton Valley	7,719	1980	1986 TA	40			2,243
	Smackover				34			138,240
ELLIOTT	Nacatoch	1,937	1974			2,680	-	70,591
Ouachita								
ELLIOTT SOUTH	Nacatoch	1,858	1982		16	-	-	11,577
Ouachita								
ENYART LAKE	Mitchell	5,874	1971		38			185,365
Lafayette								
EVANS	Smackover	7,565	1981	1987	35			4,874
Columbia								
FALCON	Nacatoch	1,180	1938		14	4,761	-	1,042,609
Nevada &	Blossom	2,360	1954		16-26	912	-	265,157
Lafayette	Tokio	2,100	1947		15-28	2,564	-	2,146,228
	Tuscaloosa	2,300	1966	1971	17			6,658
	Hill	2,384	1983	1989 TA	17			2,156
	Travis Peak	3,362	1983		28			26,590

See last page for key to Abbreviations.						PRODUCTION		
FIELD/ COUNTY	FORMATION	DEPTH (Ft.)	YEAR OF DISCOVERY	YEAR ABANDONED	API GRAVITY	2007 ANNUAL OIL (Bbls.)	2007 ANNUAL GAS (MCF)	CUMMULATIVE OIL (Bbls.)
FELSENTHAL	Cotton Valley		1948	1954				7,322
Union								
FIELD BAYOU	Cotton Valley	7,724	1966	1968	36			3,807
Lafayette	Smackover	9,386	1959	1988	43			21,129
FISH LAKE	Rodessa	5,330	1982	1984	33			2,399
Miller								
FORKY DEER	Travis Peak			1982				184
Miller								
FORT LYNN	Tokio	3,253	1967		37	672	-	310,471
Miller	Rodessa	5,990	1947		38-52			
	Kilpatrick					60	0	24,778
	Hill					128	0	21,666
	Gloyd			1986 TA				41,114
	Dees Lime							10,282
	Young					-	0	58,353
	Pettet	6,700	1983		37			4,933
	Cotton Valley	8,759	1981	1982				962
FORT LYNN EAST	Hill	6,037	1984		38			23,725
Miller								
FOUKE	Cotton Valley		1992					1,190
Miller	Buckrange	2,809	1963			-	-	108,330
	Beauford					6,598	-	157,396
	Tokio	2,920	1952		22	2,363	-	1,610,475
	Tokio, First					676	-	12,024
	Tuscaloosa	3,385	1953		34	4,236	-	202,350
	Sturgis							9,093
	Sturgis, First		1940		24-43	1,189	-	13,427
	1st Sturgis-C							
	1st Sturgis SUSW							
	1st Sturgis Sand							1,727
	PSU Sturgis C Unit					12,772	-	63,117
	PSU Nesbett A Unit					-	-	1,380
	Sturgis, Second					2,523	-	14,247
	Sturgis, Third					6,485	-	34,518
	Sturgis, Fourth					19,675	-	92,506
	Paluxy	3,400	1940			95,402	326	29,626,833
	Mooringsport		1947					411,505
	Kilpatrick	4,550	1940	1969				1,003
	Kilpatrick				37			7,829
	Pettet	5,712	1984	1987 TA	38			4,386
	Travis Peak	6,340	1980	1981	48			1,846
	Smackover	8,977	1955		64	25,323	1,045,779	2,198,762

See last page for key to Abbreviations.						PRODUCTION		
FIELD/ COUNTY	FORMATION	DEPTH (Ft.)	YEAR OF DISCOVERY	YEAR ABANDONED	API GRAVITY	2007 ANNUAL OIL (Bbls.)	2007 ANNUAL GAS (MCF)	CUMMULATIVE OIL (Bbls.)
FOUKE NORTH	Tokio	3,120	1953		16			23,044
Miller	Tuscaloosa	3,350	1951		20-36	8,966	0	3,997,467
	Paluxy	3,550	1951		17-33	813	0	1,588,839
	Smackover	8,490	1981	1989 TA	64			30,663
FOUKE WEST	Tuscaloosa	3,580	1953		32-35	0	0	162,290
Miller	Paluxy	4,180	1952		23-38	8,139	-	1,987,619
	Paluxy	4,435	1974		36			
	Paluxy	4,492	1976		38			
	Paluxy	4,661	1972		50			
	Mooringsport	4,620	1967		40			78,134
	Smackover	9,456	1994		57	1,380	48,292	168,097
FOUR MILE CREEK	Smackover	8,058	1972		40			228,796
Miller								
FOUR MILE CREEK SO.	Smackover	8,230	1987		44			91,760
Miller								
FROG LEVEL	Smackover	8,189	1981	1986	34			61,722
Columbia								
GALILEE CHURCH	Smackover	7,522	1975	1995	29			67,968
Lafayette								
GARLAND CITY	Buckrange	2,410	1959	1969	18			124,997
Miller	Tuscaloosa	2,980	1960	1964	19			11,052
	Paluxy	3,805	1951	1962 TA	13-18			186,986
	Paluxy	2,925	1932		31	2,108	-	2,674,596
GARNER CREEK	Cotton Valley	6,936	1979	1990 TA	44			49,657
Union								
GENOA	Tokio	2,980	1957	1975 TA	28			4,273
Miller	Paluxy	3,350	1957		39	5,356	-	1,615,066
	Smackover	7,925	1977	1981	51			55,117
GOLD POINT CHURCH	Smackover	5,760	1987	1995	62			24,268
Miller								
GRAVES CREEK	Hill	3,102	1991	1993	39			14,342
Union								
GRAYSON	Smackover	8,008	1993		38	604,442	877,098	13,855,649
Columbia								
GREEN GROVE	Graves	2,807	1984	1993	22			18,025
Union	Travis Peak	3,202	1984	1993	21			
GREERS CHURCH	Pettet	4,280	1979		38	6,453	102	98,500
Columbia								
GREGORY	Cotton Valley	7,966	1978		41	4,992	-	216,269
Union	Jones	9,208	1981	1984	42			3,657
GUM CREEK	Nacatoch	1,590	1941		17	4,289	106	1,405,943
Ouachita	Blossom	2,255	1945		20			11,963
	Tokio	2,470	1945		17	2,821	49	425,613
	Hogg	2,766	1965	1966	22			3,018
	Travis Peak	3,375	1964		38	4,865	116	652,518

See last page for key to Abbreviations.						PRODUCTION		
FIELD/ COUNTY	FORMATION	DEPTH (Ft.)	YEAR OF DISCOVERY	YEAR ABANDONED	API GRAVITY	2007 ANNUAL OIL (Bbls.)	2007 ANNUAL GAS (MCF)	CUMMULATIVE OIL (Bbls.)
	Cotton Valley	4,385	1964		45			258,422
	Smackover	5,866	1965		23	-	-	418,822
HAMPTON	Nacatoch	2,286	1954	1958	16			164
Calhoun	Meakin	2,480	1943		14	1,872	-	29,087
HARMONY	Smackover	9,747	1975	1976	42			2,939
Columbia								
HARMONY GROVE	Smackover	7,832	1980	1993	47			166,621
Miller								
HARPER CREEK	Cotton Valley	5,800	1985	1988	41			13,021
Columbia	Smackover	7,563	1985	1988	41			5,624
HAWKINS CREEK	Smackover	7,091	1979	1982				4,809
Columbia								
HAYNESVILLE	Pettet	5,470	1942		39	4,102	-	6,780,610
Columbia	Cotton Valley	8,850	1972		40	-	-	80,853
Columbia & Claiborne Par	Smackover	10,383	1959		47	25	57,754	32,131
HAYNESVILLE NORTH	Pettet	5,574	1961		39	-	-	116,334
	Cotton Valley	8,724	1981	1993	47			93,845
	Smackover	10,500	1980	1986	52			54,776
HENDERSON CREEK	Travis Peak	4,233	1976		43	-	0	225,102
Columbia								
HERVEY	Rodessa	3,610	1955	1985	37			15,106
Miller								
HIBANK	Nacatoch	2,080	1942		40	10,174	0	2,926,670
Union	Meakin	2,440	1952		31			2,746,817
	Graves	2,555	1952		32			733,647
	Tokio	3,126	1986	1991 TA	41			8,134
	Tuscaloosa	3,020	1953		49	1,087	0	982,539
	Glen Rose		1955	1956				2,403
	Rodessa	3,300	1977	1991 TA		0	-	35,699
	Hogg	3,145	1963	1985 TA	48			56,230
	Pettet		1961	1965				108,419
	Travis Peak	4,006	1963		45	-	-	504,873
	Cotton Valley		1959	1960	36			7,418
HIBANK SOUTH	Hogg		1954	1985 TA				57,595
Union	Travis Peak	3,480	1952	1964	34			615,004
	Cotton Valley	6,396	1986	1986				415
HIBANK CREEK	Tuscaloosa	3,065	1959		29	1,512	-	288,768
Union								
HILLSBORO	Nacatoch	2,230	1930		23	18,827	0	2,257,521
Union	Primm	2,554	1984	1986				
	Meakin	2,560	1959	1983	22			435
	Tuscaloosa	3,050	1984	1987 TA				301,312
	Travis Peak	3,390	1981		36	5,362	0	353,762
HILLSBORO SOUTH	Rodessa	3,545	1965	1983 TA	45	-	-	130,448
Union	Hogg	4,510	1966	1985 TA	44	-	-	176,479

See last page for key to Abbreviations.						PRODUCTION		
FIELD/ COUNTY	FORMATION	DEPTH (Ft.)	YEAR OF DISCOVERY	YEAR ABANDONED	API GRAVITY	2007 ANNUAL OIL (Bbls.)	2007 ANNUAL GAS (MCF)	CUMMULATIVE OIL (Bbls.)
	Travis Peak			1968				1,173
HOGG	Cotton Valley	5,575	1979		35	-	0	140,411
Union	Smackover	6,980	1984	1985	42			3,547
HOLLY SPRINGS CH.	Tuscaloosa	3,476	1980	1988	36			19,792
Miller								
HOLMES CREEK	Blossom	2,600	1952		24	965	-	591,439
Union	Tokio	2,745	1967	1991 TA	28	239	-	52,967
HOOKER BRANCH	Smackover	8,144	1974	1984	46			48,737
Miller								
HORSEHEAD	Pettet	5,850	1952		36	1,168	-	4,628,964
Columbia	Smackover	10,630	1989	1991 TA	46			507
HORSEHEAD CREEK	Smackover	9,798	1985	1990	35			35,929
Columbia								
IRMA	Nacatoch	1,150	1920		14	37,397	0	12,776,214
Nevada	Tokio	2,586	1963		30	6,151	-	3,592,248
	Paluxy	2,668	1963		32			276,325
	Glen Rose		1953	1962 TA				43,038
	Travis Peak	3,015	1953		30			666,199
	Cotton Valley		1955	1955				3,375
	Smackover	4,712	1972		28	27,627	339	2,503,454
	Rodessa	2,372	1993		26			6,637
IRONS	Tokio	2,300	1980		22			13,767
Lafayette	Tuscaloosa	2,675	1984	1986 TA	22			1,484
	Paluxy	3,342	1978	1984	14			2,350
JENNINGS	Cotton Valley	8,765	1974	1979	40			16,634
Columbia	Cotton Valley	7,908	1990		45			117,699
JONESVILLE	Morringsport		1957	1958				3,155
Miller								-
JUNCTION CITY	Smackover		1991	1992	40			807
Union								
KELLY BAYOU	Jeter	5,950	1962		38			4,934,247
Miller								
KEOUN CREEK	Pettet	5,900	1985		35	1,607	0	99,234
Columbia &	Haynesville	10,578	1984		56	32	111	60,497
Lafayette	Smackover	11,000	1983		60	4,040	48,836	805,801
KERLIN	Pettet	4,638	1971		39	41,657	0	3,523,033
Columbia	Cotton Valley	6,622	1982	1987 TA	49			2,374
	Smackover	8,310	1969			1,147	-	376,211
KIBLAH	Tokio	3,040	1988		40	2,130	-	109,105
Miller &	Hill	5,950	1955		38			200,293
Lafayette	Gloyd	6,108	1980		43	965	-	2,266,908
	Pettet	6,651	1983	1986 TA	39			5,248
KILGORE LODGE	Smackover	8,017	1969		34	-	-	54,818
Columbia								
KRAUSS HILL	Paluxy	3,990	1989	1992	38			6,308

See last page for key to Abbreviations.						PRODUCTION		
FIELD/ COUNTY	FORMATION	DEPTH (Ft.)	YEAR OF DISCOVERY	YEAR ABANDONED	API GRAVITY	2007 ANNUAL OIL (Bbls.)	2007 ANNUAL GAS (MCF)	CUMMULATIVE OIL (Bbls.)
Lafayette								
KRESS CITY	Rodessa	4,236	1988		30	19,200	-	180,045
Lafayette	Travis Peak	5,379	1958		31	3,163	-	500,183
	Cotton Valley	6,456	1958	1962				10,210
	Ford	8,195	1975		37	2,649	-	1,991,365
	Smackover	8,360	1957	1971	39			1,237,090
KRESS CITY EAST	Cotton Valley		1968	1969				161
Lafayette	Smackover	8,130	1959	1983	72			162,523
KRESS CITY SOUTH	Cotton Valley	7,321	1982	1990	39			14,343
Lafayette	Smackover	8,516	1958	1982				24,171
KRESS CITY S.E.	Smackover	8,432	1983	1990	32			148,249
Lafayette								
KRESS CITY S.W.	Smackover	8,432	1983	1986	35			2,788
Lafayette								
LAKE ERLING	Cotton Valley	8,340	1983	1987 TA	40			4,638
Lafayette	Smackover	11,015	1960		64	3,199	83,949	1,919,565
LAKE ERLING EAST	Hill	5,260	1992					138,236
Lafayette	Rodessa					9,785	-	138,742
LAKE ERLING SOUTH	Tokio	3,030	1987		42	0	0	18,467
Lafayette	Smackover	11,258	1985		48	1,775	43,177	1,210,798
	Haynesville					2,272	59,995	32,749
LAKE JUNE	Nacatoch	1,545	1966	1967	17			
Lafayette	Tokio	2,550	1966	1991	19			124,365
LANEY ROAD	Cotton Valley					22,765	-	259,372
LANGLEY	Nacatoch	1,375	1984	1987 TA	13			549
Ouachita	Buckrange	2,035	1967		28	-	-	75,273
LAPILE	Cotton Valley	5,302	1977		35	14,714	0	1,774,927
Union								
LAPILE EAST	Cotton Valley	3,975	1995		35			52,097
Union	Travis Peak					-	-	10,728
LAWSON	Meakin	2,520	1950		22	4,984	-	616,711
Union	Blossom	2,777	1986		29	268	-	42,996
	Travis Peak	3,100	1951		33	487	0	173,296
LAWSON NORTH	Graves	2,694	1988	1992 TA	18	955	-	28,677
Union								
LAWSON SOUTH	Meakin	2,543	1950	1986 TA	31			157,396
Union								
LEWISVILLE	Tokio	2,290	1939	1991 TA	19			509,150
Lafayette	Tuscaloosa	3,388	1969	1991 TA	40			
	Paluxy	3,900	1961		25	1,713	0	461,101
	Mooringsport	3,150	1981		32	586	-	89,229
	Kilpatrick							
	Hill							
	Glen Rose - Lower							
	Gloyd	3,400	1939	1974	41			993,910

See last page for key to Abbreviations.						PRODUCTION		
FIELD/ COUNTY	FORMATION	DEPTH (Ft.)	YEAR OF DISCOVERY	YEAR ABANDONED	API GRAVITY	2007 ANNUAL OIL (Bbls.)	2007 ANNUAL GAS (MCF)	CUMMULATIVE OIL (Bbls.)
	James	3,710	1971		41			13,664
	Smackover	6,759	1969		42	60,384	253,980	5,999,909
	Rodessa					-	-	12
LEWISVILLE NORTH	Tuscaloosa	2,666	1956	1991	28			533,016
Lafayette	Paluxy		1953	1958				8,610
LEWISVILLE NORTHEAST	Smackover					42,707	11,241	157,873
LEWISVILLE NORTHWEST	Smackover					-	-	20
LEWISVILLE OLD TOWN	Tokio	2,589	1963	1980 TA	19			9,514
Lafayette	Tuscaloosa	3,030	1978		30	-	-	357,120
	Paluxy	3,180	1957		22	-	-	2,596,951
	Mooringsport	4,035	1981	1995	37			45,440
	Kilpatrick	4,170	1970	1983 TA	40	-	-	1,942
	Pettet	4,735	1982	1986	42			15,760
LEWISVILLE SOUTH	Smackover		1983	1985				3,131
Lafayette								
LEWISVILLE WEST	Tokio	2,450	1947		19	7,246	-	2,429,122
Lafayette	Tuscaloosa	2,850	1980		19			78,027
	Paluxy	3,540	1959		25	4,228	-	689,684
	Glen Rose	3,580	1946	1985 TA				199,609
	Mooringsport	3,600	1982	1985 TA	37			248
	Smackover	7,070	1970		40	7,953	3,248	1,497,563
LIBERTY CHURCH	Ford	8,068	1986	1995	67			1,437
Lafayette	Smackover	8,099	1976	1997	24			48,777
	Cotton Valley							120
LICK CREEK	Nacatoch	2,270	1960	1975	17			16,552
Union &	Saratoga			1985				418
Bradley	Meakin	2,545	1957		18	9,180	-	7,063,663
	Graves	2,574	1969	1976	17			5,020
	Blossom	2,675	1965	1975 TA	14	2,816	-	73,087
	Travis Peak	2,928	1966		21			172,229
	Cotton Valley	3,386	1970	1975 TA	12			7,891
LISBON	Nacatoch	2,100	1925		34	7,365		8,579,391
Union	Smackover	7,124	1981			221	-	33,309
LISBON EAST	Cotton Valley	6,550	1960	1962				7,897
Union	Smackover	6,730	1953	1974 TA	37			124,627
LISBON NORTH	Nacatoch	2,100	1953		36	1,024	-	948,537
Union	Blossom	2,640	1983		22	0	-	3,503
LISBON NORTHWEST	Blossom	2,590	1957		22	21,380	-	2,647,813
Union	Nacatoch							612
	Smackover	6,387	1983	1993	26			8,465
LISBON WEST	Nacatoch	2,100	1955		36	502	-	96,368
Union								
LITTLE BODCAW	Tokio	2,122	1981		20			42,667
Lafayette								
LITTLE CHURCH	Tokio	3,290	1984		37	2,089	-	150,365

See last page for key to Abbreviations.						PRODUCTION		
FIELD/ COUNTY	FORMATION	DEPTH (Ft.)	YEAR OF DISCOVERY	YEAR ABANDONED	API GRAVITY	2007 ANNUAL OIL (Bbls.)	2007 ANNUAL GAS (MCF)	CUMMULATIVE OIL (Bbls.)
Miller	Tuscaloosa	3,557	1983		39	2,782	0	150,870
	Paluxy	3,674	1992		38			31,028
LLOYD CREEK	Nacatoch	2,340	1968		17	2,049	-	88,214
Calhoun								
LOCUST BAYOU	Meakin	1,990	1947		15	1,621	-	373,023
Calhoun								
LOUTRE CREEK	Cotton Valley			1982				3,024
Union	Smackover			1954				105,572
LOWERY BRANCH	Smackover					7,561	-	42,672
MAGNOLIA	Rodessa	3,220		1958				5,326
Columbia	Pettet	4,222	1988		43	641	-	30,734
	Travis Peak	4,870	1979	1989	44			56,895
	Cotton Valley	6,390	1943		47	8,952	14,596	1,676,912
	Smackover	7,500	1938		38	213,320	306,483	169,511,707
MANDEVILLE	Smackover	6,208	1975		33	1,210	0	143,920
Miller								
MARS HILL	Cotton Valley			1969				2,509
Lafayette	Smackover	9,012	1985	1992	61			95,045
MARYSVILLE	Cotton Valley	6,023	1970	1973	42			3,138
Union	Smackover					5,966	-	140,182
MAYTON	Tuscaloosa	2,940	1967		27			52,767
Miller	Paluxy	3,620	1967		16	752	-	502,878
	Mooringsport	3,952	1976	1987	31			30,317
MCDONALD	Sligo	2,821	1929	1932	31			117,085
Ouachita								
MCKAMIE NORTHEAST	Smackover	8,230	1982	1990	66			64,334
Lafayette								
MCKAMIE PATTON	Gloyd	4,755	1973		31	15,325	-	855,962
Lafayette	James	5,014	1971		38	18,595	-	2,335,934
	Cotton Valley	7,306	1970		45	51,604	3,068	3,533,498
	A Lime							37,749
	Reynolds Lime	9,100	1940		55			32,395,440
	Paluxy							3,916
	Smackover		1940			32,094	134,363	349,440
	Travis Peak					134		134
MCKAMIE SOUTH	Smackover	9,340	1986	1989	55			3,107
Lafayette								
MCKINNEY BAYOU	Tokio	2,810	1975	1982	32			6,194
Miller	Tuscaloosa	3,050	1955	1989 TA	20			54,331
	Paluxy	3,398	1955		31	3,345	-	1,865,941
	Glen Rose	3,930	1955	1990 TA	39	0	-	51,141
	Mooringsport	3,957	1985	1986 TA	25			2,565
MCLENDON BRANCH	Smackover		1991		42	-	-	506,365
Columbia	Buckner		1992					10,079
	Pettet	4,814	1993					9,751

See last page for key to Abbreviations.						PRODUCTION		
FIELD/ COUNTY	FORMATION	DEPTH (Ft.)	YEAR OF DISCOVERY	YEAR ABANDONED	API GRAVITY	2007 ANNUAL OIL (Bbls.)	2007 ANNUAL GAS (MCF)	CUMMULATIVE OIL (Bbls.)
OLIN FOREST	Tuscaloosa	3,200	1956	1970	47			390,250
Union	Rodessa	4,300	1964	1984 TA	44			15,020
	Hogg Sand	4,400	1960		72			715,245
	Travis Peak	4,519	1969	1970	50			182
OLIN FOREST NORTH	Rodessa	3,155	1966		43	-		226,896
Union	James Lime	3,328	1966		42			421,279
	Hogg	3,573	1966		41	629		575,402
	Travis Peak	3,943	1966	1989 TA	43	381		233,608
	Cotton Valley	4,807	1966	1970 TA	18			42,009
	Cotton Valley	5,011	1988	1988	38			1,368
PACE CITY	Meakin	2,190	1947		27	2,419	-	476,803
Ouachita	Graves	2,350	1967	1986	18	319	-	5,209
	Blossom	2,470	1967		23	922	-	115,443
	Tokio	2,565	1978		29	517	-	41,979
	Glen Rose	3,105	1947		31	3,436	-	1,254,935
	Rodessa	2,740		1965	29			44,182
	Hogg Sand	3,055	1957		30	590	-	129,660
	Travis Peak	3,200	1951		27	2,936	-	812,095
	Cotton Valley	4,236	1985		40	1,164	152	52,221
	Smackover	5,622	1976		25	12,798	345	492,458
PACE CITY EAST	Nacatoch			1964 TA				
Ouachita	Meakin	2,290	1953		27	1,387	-	703,881
	Graves	2,400	1952		21	1,218	-	843,823
	Rodessa	2,953	1972		30	-	-	57,509
	Pettet	2,820	1965	1989 TA	26	-	-	15,243
	Travis Peak	2,817	1954	1973	18			19,087
	Smackover	5,645	1969	1976	27	11,900	-	15,445
PACE CITY WEST	Smackover					1,287		1,287
Ouachita								
PALM	Smackover	6,556	1963		35			119,464
Lafayette								
PALM WEST	Paluxy	3,187	1984		23	3,666	-	135,310
Lafayette								
PATMOS	Tuscaloosa	2,220	1970	1971	18			507
Hempstead	Smackover	5,860	1966	1971	28			22,595
PATMOS NORTH	Tokio	1,884	1982		19	3,166	-	160,491
Hempstead								
PAUP SPUR	Pettet	4,084	1978	1990	30			71,842
Miller	Travis Peak	4,260	1985	1990	16			2,524
	Smackover	6,150	1975		43	22,025	26,396	1,597,000
PIGEON HILL	Travis Peak	2,923	1955	1985 TA	18			4,471
Bradley & Union	Cotton Valley	4,287	1955		15			251,510
PILL BRANCH	Jeter	6,115	1987		41			55,498
Miller	Rodessa					-	-	412
PINE TREE	Cotton Valley	6,863	1969	1985				2,093

See last page for key to Abbreviations.						PRODUCTION		
FIELD/ COUNTY	FORMATION	DEPTH (Ft.)	YEAR OF DISCOVERY	YEAR ABANDONED	API GRAVITY	2007 ANNUAL OIL (Bbls.)	2007 ANNUAL GAS (MCF)	CUMMULATIVE OIL (Bbls.)
Columbia	Smackover	8,425	1949		44	2,456	12,363	1,517,921
	Travis Peak	4,672	1993	1995				0
PISGAH	Pettet	5,500	1977		38	4,934	-	151,650
Columbia	Cotton Valley	10,532	1982	1991 TA	48			53,809
PLAINFIELD	Pettet	5,839	1965		34	327	-	136,027
Columbia	Cotton Valley	9,184	1957		44	3,157	-	1,514,773
	Rodessa	4,990	1989		43			37,223
PLEASANT GROVE	Travis Peak	3,581	1967	1977 TA	42			54,334
Union								
PLEASANT HILL	Cotton Valley			1981				7,117
Miller	Smackover	8,327	1974	1979	63			45,199
PLEASANT VALLEY	Cotton Valley	9,068	1980	1981	38			1,846
Lafayette								
PLEASANT VALLEY SO.	Rodessa		1990		42	3,394	-	290,546
Lafayette								
POISON SPRINGS	Meakin			1963				129
Ouachita								
PROMISED LAND	Hill	5,968	1985	1985	40			200
CHURCH								
Miller								
PRUDHOE BAY SOUTH	Tokio	2,688	1988		17			14,062
Lafayette	Paluxy	3,681	1990		22			3,088
RAINBOW SOUTH	Nacatoch	2,208	1986	1989 TA	21			397
Union	Tuscaloosa	3,078	1982		40	3,023	-	350,859
	Rodessa		1982	1982				2,304
	Travis Peak	3,315	1980	1986 TA	32	-	-	15,181
	Cotton Valley	4,653	1967	1985	34			7,379
RAMSEY CREEK	Tokio	2,978	1983	1986 TA	19	-	-	1,590
Union	Sligo			1956				6,291
RAWLS CREEK	Ford	8,316	1976	1989 TA	54			
Lafayette								56,132
RED ROCK	Pettet	5,633	1975	1997	40			
Columbia								657,837
RICHLAND CREEK	Tokio	2,768	1971	1980 TA	32			21,386
Union								
RILEY BRANCH	Cotton Valley	6,877	1977	1980	41			4,177
Columbia								
RITCHIE	Baker	2,606	1963		16	1,458	-	1,221,366
Union								
RIVER BEND	Blossom	2,731	1959	1963	16			338
Union								
ROCKY MOUND	Gloyd	5,600	1962	1965	33			19,388
Columbia								
ROCKY MOUND SOUTH	Hill	5,558	1981	1992	70			45,893
Miller	Lower Hill	5,622	1983		38			

See last page for key to Abbreviations.						PRODUCTION		
FIELD/ COUNTY	FORMATION	DEPTH (Ft.)	YEAR OF DISCOVERY	YEAR ABANDONED	API GRAVITY	2007 ANNUAL OIL (Bbls.)	2007 ANNUAL GAS (MCF)	CUMMULATIVE OIL (Bbls.)
RODESSA	Rodessa	6,050	1937		42	5,333		9,269,390
Miller	Jeter	5,900	1964		65			89,621
	Hill	6,025	1983		28	255	-	37,064
	Gloyd	6,122	1983		45	29,490	-	666,911
	Pettet	6,784	1990		44	4,119	-	101,964
RODESSA NORTH	Wisinger		1943	1963				101,912
Miller								
RODESSA WEST	Hill	5,965	1959	1996	40			258,949
Miller	Jeter	6,000	1980	1988	46			36,611
	Mitchell	6,090	1960		41	-	-	67,509
RONDO	Smackover	6,517	1982	1984				2,488
Miller								
SALEM CHURCH	Travis Peak	4,296	1964		42	500	-	174,908
Union	Cotton Valley	5,328	1967	1971	35			3,139
	Smackover	6,945	1984	1975	69			278,329
SALEM GRACE CHURCH	Cotton Valley	8,740	1990		44			24,392
Lafayette								
SANDY BEND	Nacatoch	2,270	1947		19	39,494	-	13,343,937
Union	Blossom	2,762	1956	1983	25			35,792
	Travis Peak	3,357	1984		25	548	-	10,833
SAUL'S CHAPEL	Tuscaloosa	3,180	1964	1990	45			431,444
Union	Travis Peak	3,880	1964	1985	43			76,418
SEMINARY CHURCH	Buckrange	2,269	1972	1985 TA	29			4,307
Ouachita	Blossom	2,427	1971		30			43,327
	Tokio	2,540	1971		18			125,774
SHEPHERD	Nacatoch			1957				1,308
Union	Travis Peak	3,140		1967	38			47,478
SHEPPARD BRANCH	Hill	3,222	1995		44			33,713
Union	Rodessa					1,532	-	23,612
SHILOH	Tokio	2,700	1964		14	5,723	-	569,700
Lafayette	Tuscaloosa	2,975	1966		19	52	-	116,468
	Paluxy	3,025	1966		23	341	-	208,069
SHONGALOO NORTH	Pettet	5,750	1951	1987 TA	40			576,386
Columbia								
SHORT	Blossom	2,858	1969		20	1,890	-	10,289
Union								
SHULER	Graves			1951 TA				93
Union	Blossom			1971 TA				
	Tuscaloosa	3,100	1952		38	968	0	556,885
	Glen Rose			1971 TA				
	Hill Sand	3,160	1954		42	8,512	-	1,428,073
	Pettet	4,010	1950		42	66,797	-	3,477,738
	Travis Peak			1971 TA				0
	Morgan Sand	5,500	1937		41			4,502,080
	Cotton Valley	5,580	1953		42	61,759	4,204	10,613,966

See last page for key to Abbreviations.						PRODUCTION		
FIELD/ COUNTY	FORMATION	DEPTH (Ft.)	YEAR OF DISCOVERY	YEAR ABANDONED	API GRAVITY	2007 ANNUAL OIL (Bbls.)	2007 ANNUAL GAS (MCF)	CUMMULATIVE OIL (Bbls.)
	Mayfield B Sand	5,590	1952		42	2,677	-	1,614,427
	Lagrone Sand	5,700	1953	1989 TA	42			1,912,483
	Jones	7,530	1937		34	106,384	5,708	83,010,240
	Reynolds			1955				7,728,942
SHULER EAST	Tuscaloosa	3,075	1977		42			45,591
Union	Pettet	3,930	1951		45	3,026	-	594,678
	Morgan Sand	5,580	1941		46	1,524	-	1,999,229
	Cotton Valley	7,130	1951		38	2,755	0	1,417,404
	Jones	7,530	1951		40			100,551
	Smackover	7,640	1951		46	346	-	206,431
SMACKOVER	Uncontrolled	1,920	1922		19	1,694,853		586,533,376
Union &	Travis Peak	3,100	1953		31	8,030	-	4,510,829
Ouachita	Cotton Valley	4,050	1976		38	1,520	-	98,650
	Smackover	5,900	1978	1986	31			25,032
	Meakin					2,018	-	24,875
	Nacatoch					137,012	-	1,186,818
BILYEU AREA	Travis Peak	2,668	1968		26			320,499
BOLLENBACKER AREA	Travis Peak	3,250	1970		34	1,056	-	269,708
KIRKLAND AREA	Travis Peak	3,360	1964	1965	25			4,095
LINGLE BACH AREA	Cotton Valley			1963				122
ROSENBAUM AREA	Travis Peak	3,092	1958	1965	24			43,684
SAND LAND AREA	Cotton Valley	4,050	1960	1969	39			86,912
	Travis Peak		1961	1972	36			77,039
SHULER AREA	Travis Peak	3,370	1970	1991	35			46,921
STEVENSON AREA	Travis Peak	2,930	1980		43	2,167	-	71,624
TURNER AREA	Travis Peak	2,926	1951		40			131,323
SMITHVILLE	Blossom	2,960	1966		36			21,309
Union								
SNOW HILL	Travis Peak	3,300	1956		31	4,543	-	650,828
Ouachita	Cotton Valley	3,363	1955		35	7,680	-	4,387,745
	Smackover	4,821	1936			1,246	0	866,212
SPIRIT LAKE	Buckrange			1949				3,663
Lafayette	Tokio	2,702	1980		18	1,011	-	42,914
	Tuscaloosa	3,170	1978		33	2,677	0	167,024
	Goodland Lime	3,600	1949		36	1,214	0	367,617
	Paluxy	3,740	1947		34	8,385	-	2,748,128
	Mooringsport	3,873	1947		29	2,383	-	155,131
	Kilpatrick	4,100	1946	1972 TA	38			1,575,451
	Hill		1979		42			88,842
	Smackover	7,051	1971		54	2,336	54	261,873
	Glen Rose					1,490	-	16,735

See last page for key to Abbreviations.						PRODUCTION		
FIELD/ COUNTY	FORMATION	DEPTH (Ft.)	YEAR OF DISCOVERY	YEAR ABANDONED	API GRAVITY	2007 ANNUAL OIL (Bbls.)	2007 ANNUAL GAS (MCF)	CUMMULATIVE OIL (Bbls.)
STEPHENS	Nacatoch	1,402	1971		17	9,191	-	823,263
Columbia &	Buckrange	2,100	1922		30	22,103	-	24,072,902
Ouachita &	Tokio	2,260	1965		17	1,338	-	152,618
	Rodessa	2,650	1949		28	109	-	678,003
Nevada	Rodessa	3,277	1972		32			
	Glen Rose	2,660	1948		30	2,323	-	1,200,436
	James Lime	3,100	1945		31	629	-	512,201
	Hogg Sand	3,190	1949		35	10,985	-	6,765,997
	Pettet	3,393	1981		26	6,510	-	207,546
	Cotton Valley	4,910	1985		32			8,297
	Smackover	5,940	1956		34	79,103	-	3,396,879
	Smart					955	-	6,403
CURRY AREA	Nacatoch	1,350	1966	1990 TA	17			44,380
	Buckrange	1,960	1966	1971	33			15,314
	Rodessa	2,939	1967	1969 TA	16			4,360
	Travis Peak	3,300	1949		32			764,807
SMART AREA	All Sands	3,040	1941		30	61,887		22,375,640
STEPHENS NORTH	Buckrange	1,990	1945		26	-	-	540,888
Nevada								
STEPHENS NORTH EXT	Blossom	2,140	1950		29	2,597	-	344,645
Ouachita								
STOW LAKE	Graves	2,764	1969	1987 TA	16	-	-	4,116
Union	Travis Peak			1986				70
STRONG	Cotton Valley	5,890	1962	1989 TA	36			121,588
Union	Smackover	6,242	1980		32			83,350
STRONG NORTH	Nacatoch	2,300	1958	1971	21			
Union	Travis Peak	3,944	1985	1986	39			
	Cotton Valley	4,864	1979		32	2,131	-	131,070
SULPHUR RIVER	Rodessa	5,880	1993	1995	41			2,220
Miller								
SUNVIEW	Paluxy	2,790	1965	1966	21			4,600
Lafayette								
TEXARKANA	Pettet	4,926	1977		36	9,845	0	465,540
Miller	Smackover	7,358	1942	1971	70			408,912
TEXARKANA EAST	Travis Peak	5,134	1981	1982				2,039
Miller								
THREE CREEKS	Cotton Valley	8,054	1979	1983	42			6,711
Union								
THREE CREEKS EAST	Cotton Valley	6,600	1984	1991	40			9,465
Union								
TOM CREEK	Nacatoch			1968 TA				0
Union	Blossom	2,772	1965	1970	24			2,180
	Travis Peak	3,000	1964	1965	21			3,188

See last page for key to Abbreviations.						PRODUCTION		
FIELD/ COUNTY	FORMATION	DEPTH (Ft.)	YEAR OF DISCOVERY	YEAR ABANDONED	API GRAVITY	2007 ANNUAL OIL (Bbls.)	2007 ANNUAL GAS (MCF)	CUMMULATIVE OIL (Bbls.)
TROY	Nacatoch	1,220	1936		18	27,143	-	10,300,416
Nevada	Tokio	2,150	1936		18			
	Tokio 13-15-18-20					7,337	-	82,308
	Blossom	2,630	1956		29	2,979	-	1,008,437
	Glen Rose	2,332	1954	1986	25			66,412
	Travis Peak	2,665	1954		27	741	-	152,067
	Smackover	4,755	1974		32	7,993	-	1,158,346
TROY EAST	Nacatoch	1,309	1956	1989 TA	15			102,497
Ouachita								
TROY NORTH	Nacatoch	1,723	1956	1980 TA	16			17,775
Nevada	Blossom	2,340	1956	1997	24			104,171
	Tokio	2,450	1956	1981 TA	22			380,893
	Paluxy	2,830	1973		26	548	-	107,138
	Rodessa	2,853	1977		20	1,095	0	178,911
TROY SOUTH	Tokio							5,614
TUBAL	Cotton Valley	8,010	1950		46	-	0	844,556
Columbia & Union	Smackover	9,280	1950		51	4,755	0	1,741,354
TURKEY CREEK	Tuscaloosa	3,101	1976	1993	41			134,709
Union								
URBANA	Nacatoch	2,300	1930		32	1,890	-	1,051,052
Union	Meakin	2,500	1946	1960	20			1,045,255
	Graves	2,604	1958	1984 TA	25	1,239	-	16,553
	Blossom	2,740	1971		32	3,400	0	516,525
	Tokio	2,840	1953		25	170	0	27,390
	Rodessa		1971	1971 TA				12
	Hogg	3,945	1971	1971	36			1,119
	Thompson			1958				14,041
	Crain	3,000	1940		26	1,068	-	2,538,354
	Gregory	3,200						9,829,083
	Upper Parker	3,350	1951		31	8,284	-	501,805
	Lower Parker	3,550	1959		24	0	-	138,909
	Urbana	3,526	1929		23	10,665	-	942,713
	Sand Unit (3500)					-	-	22,350
	Travis Peak	3,500	1951		27	16,453	345	3,508,590
VILLAGE	James			1978 TA				17
Columbia	Pettet	3,990	1949		30	8,727	-	309,039
	Travis Peak	4,550	1946		47	35,394	-	14,107,580
	Cotton Valley	5,570	1946		54	20,637	164	2,379,790
	Smackover	7,320	1938		47	7,512	0	12,727,357
WALDO	Smackover	7,119	1989		39	3,414	71	147,630
Columbia	Pettet					23,706	496	41,633
WALKER CREEK	Cotton Valley			1972				655
Columbia & Lafayette	Smackover	10,870	1968		48	42,718	378,811	35,724,819

See last page for key to Abbreviations.						PRODUCTION		
FIELD/ COUNTY	FORMATION	DEPTH (Ft.)	YEAR OF DISCOVERY	YEAR ABANDONED	API GRAVITY	2007 ANNUAL OIL (Bbls.)	2007 ANNUAL GAS (MCF)	CUMMULATIVE OIL (Bbls.)
WALNUT HILL	Mitchell	5,830	1957		41	44,015	3,536	2,677,014
Lafayette	Pettet			1951				2,374
	Smackover			1954				208,343
WARE CREEK	Smackover	10,404	1979		55	4,169	0	476,740
Columbia								
WARNOCK SPRINGS	Smackover	7,432	1982	1989 TA	70	9,137	-	126,771
Columbia								
WELCOME	Smackover	11,170	1969		45	0	0	1,639,631
Columbia	Cotton Valley	8,802	1990		42			8,490
WESGUM	Nacatoch	1,637	1978		15			2,638
Ouachita	Tokio			1997				91,989
	Travis Peak							1,436
	Rodessa	2,748	1986		42	639	-	63,196
	Sligo							1,099
	Smackover	5,808	1971		22	7,714	386	1,226,616
WESSON	Nacatoch	1,500	1946		15	22,960	-	1,471,935
Ouachita	Buckrange	2,200	1947		30	-	-	2,796,820
	Blossom	2,200	1947		30			827,677
	Tokio	2,340	1986	1990 TA	19			331,274
	Glen Rose	2,720	1945		30	11,699	0	1,013,724
	Hill	2,590	1945		32	4,846	0	8,870,263
	James Lime	2,960	1945		30	0	0	325,676
	Hogg	3,100	1946		32	55,120	791	39,884,576
	Sligo	2,595	1964		23	1,094	0	186,646
	Pettet	3,326	1982		22			13,944
	Travis Peak	3,220	1946		36	156,192	2,742	6,024,126
	Smackover	5,845	1967		34	36,013	-	3,962,413
WESSON NORTH	Nacatoch	1,358	1952		15	-	-	11,426
Ouachita	Buckrange	1,950	1966		33			348,087
	Buckrange & Blossom					-	-	984
	Blossom	1,986	1966		33			
WICKHAM CREEK	Smackover	6,993	1974	1997	35			316,788
Union								
WICKHAM CREEK W.	Smackover	7,034	1990	1994	33			64,481
Union								
WILDWOOD	Travis Peak	3,200	1986	1992	41			3,833
Union								
WILKS	Cotton Valley			1952				5,573
Union	Smackover	7,875	1977			126	-	30,254
WILLISVILLE	Nacatoch	1,211	1951		14	16,659	-	851,238
Nevada	Blossom	1,946	1955		22	1,678	-	251,298

See last page for key to Abbreviations.						PRODUCTION		
FIELD/ COUNTY	FORMATION	DEPTH (Ft.)	YEAR OF DISCOVERY	YEAR ABANDONED	API GRAVITY	2007 ANNUAL OIL (Bbls.)	2007 ANNUAL GAS (MCF)	CUMMULATIVE OIL (Bbls.)
WILLISVILLE S.W.	Nacatoch	1,140	1956		14	28,619	-	4,636,904
Nevada	Blossom	1,980	1970		18	3,632	-	360,889
	Tokio	2,070	1981	1989 TA	15	0	-	2,031
	Travis Peak	3,260	1973	1983	28			5,015
WILLISVILLE WEST	Nacatoch	1,200	1957		15	7,254	-	565,754
Nevada	Tokio	2,135	1955		19			255,341
	Hogg	2,977	1973	1992	22			193,654
WILMINGTON	Graves	2,768	1977		17	1,373	-	28,964
Union	Travis Peak	3,438	1958	1971	18			26,142
WILMINGTON SOUTH	Graves	2,822	1984	1988				1,224
Union								
WINCHESTER	Meakin	2,635	1956		20	2,939	-	1,074,637
Union								
WOODLEY	Nacatoch	1,925	1922		20	2,647		473,987
Union								
WOODLEY WEST	Nacatoch	2,140	1951		32	23,979	-	3,805,373
Union								-
WYATT	Nacatoch	2,150	1978	1986	34			1,477
Union								
YOUNG	Paluxy	2,965	1958	1964	28			35,465
Nevada								
TOTAL						6,102,538	7,476,824	1,815,253,573
TOTAL UNCONTROLLED						-		
TOTAL CONTROLLED						6,102,538		
GRAND TOTAL						6,102,538		

ABBREVIATIONS:

A	Anticline	LF	Lense Faulted	PL	Porous Limestone
AF	Anticlinal Faulted	LS	Limey Sandstone	S	Sandstone
AL	Anticlinal Lense	MF	Monocline Faulted	SL	Sandy Limestone
ALF	Anticlinal Lense Faulted	MLF	Monoclinial Lense Faulted	ML	Monoclinial Lense
—	Estimated	OL	Oolitic Limestone		
L	Limestone	Por	Porosity Pinchout		

North Arkansas Production Data

NORTH ARKANSAS RESERVOIR DATA

FIELD	COUNTY	FORMATION	YEAR OF DISCOVERY	YEAR ABANDONED	2006 ANNUAL GAS (MCF)	CUMMULATIVE MCF
AETNA	Logan	Atoka	1956		11,660,659	679,880,946
	Franklin	Morrow				-
		Penters				-
ALMA	Crawford	Atoka	1916		304,921	3,702,712
		Atoka	1961			36,993,360
		Morrow	1967			-
		Uncontrolled				2,337
ALMA, NORTH	Crawford	Hale	1985		13,079	558,471
		Boone	1985			-
ALTUS	Franklin	Atoka	1960		1,180,895	94,333,837
		Morrow				-
		Pitkin				0
B-43	Arkansas, Cleburne, Conway, Cross, Faulkner, Independence, Jackson, Lee, Lonoke, Monroe, Phillips, Prairie, St. Francis, Van Buren, White Woodruff	Fayetteville, Moorefield, Chattanooga			89,167,830	102,955,972
	Crawford, Franklin, Johnson, Pope					-
B-44 Area	Logan, Sebastian, Yale, Franklin, Scott				88,767	88,767
BALDWIN	Washington	Sylamore	1985		0	1,601,629
BARNEY	Faulkner	Hale	1990	1991	0	87,887
BATES	Scott	Atoka	1982	1986	0	-
BATSON	Johnson	Atoka	1973		781,687	125,015,945
		Morrow	1973			-
		U/Boone	1974			-
BEVERLY	Sebastian	Atoka	1937		5,822	4,405,109
	Franklin					-
		Uncontrolled				100,116
BLAIR CREEK	Washington	Sylamore	1986		0	302,901
BLAIR CREEK SOUTH	Washington	Boone	1987		0	1,514,755
BLICK	Conway	Atoka	1967	1992	5,533	23,217
BLOOMER	Sebastian	Atoka	1945	1971	0	158,116
BONANZA	Sebastian	Atoka	1962		4,230,473	227,644,846
		Morrow	1962			-
		Hunton	1962			-
		Penters				-
		Pitkin				-
BOOGER HOLLOW	Pope	Atoka	1962	1969	0	46,516
BOONEVILLE	Sebastian	Atoka	1958		20,473,489	204,663,082
	Logan					-
BRENTWOOD	Washington	Wedington	1977		0	1,833,123
BROCK CREEK	Logan	Atoka	1992		106,847	1,454,629
BROCK CREEK (BELL)	Logan	Bell	1991		1,643	205,583
CANNON CREEK	Madison	Sylamore	1986		0	-
CAULKSVILLE	Logan	Atoka	1964		2,881,024	66,628,696
		Morrow	1967			-
CECIL	Franklin	Atoka	1950		13,944,620	837,407,518

FIELD	COUNTY	FORMATION	YEAR OF DISCOVERY	YEAR ABANDONED	2006 ANNUAL GAS (MCF)	CUMMULATIVE MCF
	Sebastian	Morrow				-
	Crawford	Viola	1967			-
		Pitkin				-
CENTER RIDGE	Conway	All to base of Boone			0	23,302
CHAFFEE ARKOMA UNIT	Franklin	Atoka			45,451	456,788
	Sebastian					-
CHAMBERS	Sebastian	Hartshorne Coal			218,809	2,510,517
CHARLESTON	Franklin	Atoka	1964	1974	-	38,471
CHISMVILLE	Logan	Atoka	1959		17,414,169	123,572,752
CLARKSVILLE	Johnson	Atoka	1921		865,911	86,794,230
		Atoka	1967		-	62,115,125
		Morrow	1965			-
		Uncontrolled			91,198	1,574,791
CLAY	White	Arbuckle	1995		518	56,420
CLINTON N. E.	Van Buren	Hale	1997		0	58,789
CNR HARTFORD	Sebastian	Hartshorne Coal			1,708,348	3,751,184
COAL HILL	Johnson	Atoka	1958		357,766	37,324,813
		Morrow				-
CYPRESS VALLEY	Conway	Morrow	1985	1987	0	-
DELAWARE	Logan	Atoka	1970		710,802	14,379,174
DEAN SPRINGS	Conway	Boone	1976		0	-
		Hunton				-
DOVER	Pope	Atoka	1959		1,113,189	108,944,135
		Morrow				-
		Pitkin				-
		Batesville				-
		Boone				-
		Penters				-
		Hunton				-
		Pre-Penn				-
DRIPPING SPRINGS	Crawford	Atoka	1984		41,020	3,132,250
		Morrow	1982			-
		Boone	1982			-
DYER	Franklin	Atoka	1964		1,377,428	74,729,521
		Morrow	1965			-
EWING	Sebastian	Atoka	1936		2,827,535	44,215,141
		Atoka	1964			105,597,719
		Morrow	1964			-
		Penters	1966			-
		Hunton				-
		Uncontrolled			589,223	7,482,366
EXCELSIOR	Sebastian	Atoka	1970		867,247	16,975,386
FERN SPRINGS	Franklin	Wedington	1981		0	5,782
FLETCHER CREEK	Logan	Atoka	1966		184,519	3,774,761
FRIENDSHIP CHURCH	Washington	Boone	1987		0	518,632
		Sylamore	1986			-
FROG BAYOU	Crawford	Dunn C	1992		0	334,575
FURGERSON	Pope	Atoka	1965		530,290	57,702,636
		Morrow				-
		Brentwood				-
GOOSE CREEK	Washington	Sylamore	1985		0	240,888
CRAGG	Sebastian	Atoka	1955		16,597,948	262,554,828
GREENBRIER	Faulkner	Morrow	1984		0	143,125
GREENWOOD	Sebastian	Atoka	1969		461,267	10,052,366
GREENWOOD JUNCTIO	Crawford	Atoka	1927		0	42,063

FIELD	COUNTY	FORMATION	YEAR OF DISCOVERY	YEAR ABANDONED	2006 ANNUAL GAS (MCF)	CUMMULATIVE MCF
GRIFFIN MOUNTAIN	Conway	Fayetteville			0	914,695
		Boone				-
HACKETT	Sebastian	Atoka	1966	1981	0	424,262
HARDT	Washington	Wedington	1987		0	341,926
		Boone	1987			-
		Sylamore	1987			-
HARGARVILLE	Johnson	Atoka	1968	1974	0	798,639
HARTFORD	Sebastian	Hartshorne Coal			875,248	5,216,467
HAZEL VALLEY	Washington				2,392	790,841
HECTOR	Pope	Atoka	1984		0	1,375,003
		Morrow	1984			-
HICKORY CREEK	Washington	Wedington			18,651	125,185
HIGH OCEAN	Washington	Sylamore	1985		0	177,944
HOLLIS LAKE	Crawford	Atoka	1958		3,980,742	280,248,539
		Morrow	1960			-
		St. Peter	1968			-
HUNT	Johnson	Atoka	1968		41,392	6,837,325
HUNTSVILLE	Madison	Sylamore	1976		0	823,539
HURRICANE CREEK	Crawford	Morrow	1981		3	894,344
		Wedington	1981			-
		Boone	1981			-
JERUSALEM	Conway	Atoka	1956		0	15,205,415
JERUSALEM EAST	Conway		1989		-	102,679
JETHRO	Franklin	Atoka	1955		879,860	46,082,492
		Morrow				-
		Boone				-
KIBLER	Crawford	Atoka	1915		0	295,413
		Uncontrolled				-
KIBLER (DEEP)		Uncontrolled			0	14,961
KIBLER (SHALLOW)		Uncontrolled			38,080	590,731
KIBLER-WILLIAMS	Crawford	Atoka	1957		3,484,733	184,809,593
		Morrow	1960			-
		Pre-Penn	1962			-
		Uncontrolled			377,113	2,704,080
KNOXVILLE	Pope	Atoka	1958		1,317,736	87,755,654
	Johnson					-
LAVACA	Sebastian	Atoka	1921		0	2,674,564
		Uncontrolled				-
LAVACA (DEEP)		Uncontrolled			4,066	905,334
LEE CREEK	Crawford	Morrow	1985		161,526	4,189,315
LINVILLE	Johnson	Atoka	1974		72,423	8,917,798
LITTLE CREEK					0	365,862
		Morrow	1974			-
LOCKE	Crawford	Boone	1979			-
LONE ELM	Franklin	Atoka	1950		1,333,658	137,611,205
		Morrow				-

FIELD	COUNTY	FORMATION	YEAR OF DISCOVERY	YEAR ABANDONED	2006 ANNUAL GAS (MCF)	CUMMULATIVE MCF
		Pre-Penn				-
LUDWIG	Johnson	Atoka	1959		1,583,165	49,372,745
		Morrow				-
LUTHERVILLE	Johnson	Boone	1978		0	83,871
MANSFIELD	Sebastian	Atoka	1901		10,362,414	55,516,723
		Atoka	1965			-
		Uncontrolled				5,713,728
MARTINVILLE	Faulkner	Atoka	1980	1985	0	24,459,826
		Morrow				37,885
MASSARD	Crawford	Atoka	1951		4,975,218	343,279,532
	Sebastian	Morrow	1957			-
		Penters	1963			-
		Hunton	1962			-
		Boone				-
		Uncontrolled			184,229	1,733,049
MASSARD PRAIRIE	Sebastian	Atoka	1904		0	38,991,724
MIKES CREEK	Johnson	Morrow	1985		0	-
		Boone	1985			-
MINERAL SPRINGS	Washington				0	-
MORELAND	Pope	Atoka	1954		844,953	100,974,157
		Morrow	1956			-
MT. NEBO	Yell	Atoka	1959	1960	0	-
NATURAL DAM	Crawford	Atoka	1978		0	-
NEW HOPE	Pope	Atoka	1961		416,029	15,468,210
		Morrow				-
NEW QUITMAN					0	283,050
OAK GROVE	Pope	Atoka			382,978	29,552,592
		Penters	1975			-
OLD HICKORY	Conway	Atoka	1958	1985	0	493,258
OZARK	Franklin	Atoka	1930		492,092	8,509,427
		Morrow	1961			-
OZARK (SHALLOW)					2,290	828,576
OZARK (DEEP)					9,757	4,719,016
OZARK (ANDERSON)					0	1,782,738
OZARK (NEW)					0	27,881,096
OZONE	Johnson	Atoka	1974		279,637	15,824,132
		Morrow				-
		Pitkin				-
		Boone	1974			-
PARADISE	Franklin	Morrow	1961		0	-
PARIS	Logan	Atoka	1966		538,203	32,286,945
		Morrow				-
PEARSON	Cleburne	Morrow	1981	1983	0	-
PETER PENDER	Franklin	Atoka	1962		3,434,542	150,831,117
		Morrow	1959			-
PINE RIDGE	Logan	Atoka	1986		14,804	790,947

FIELD	COUNTY	FORMATION	YEAR OF DISCOVERY	YEAR ABANDONED	2006 ANNUAL GAS (MCF)	CUMMULATIVE MCF
PINEY CREEK					0	59,261
POSSOMTROT	Franklin	Atoka	1966		239,917	20,687,478
		Morrow	1966			-
PRAIRIE VIEW	Logan	Atoka	1954		289,303	7,948,246
		Morrow				-
QUITMAN	Cleburne	Atoka	1959	1992	0	318,185
QUITMAN, NEW	Cleburne	Fayetteville			0	-
	Faulkner					-
RENA	Crawford	Hale & Boone			12,478	244,126
RICH HOLLOW	Washington	Wedington	1990		2,497	137,801
RICH MOUNTAIN					1,634,596	1,748,896
ROCK CREEK	Franklin	Atoka	1959		144,510	19,632,241
		Morrow				-
		Wedington				-
ROSS	Johnson	Atoka	1959		1,243,216	151,341,846
	Pope	Morrow				-
RUDY	Crawford	Atoka	1949		81,233	5,741,286
		Morrow				-
		Boone				-
SCOTLAND	Van Buren	Fayetteville			0	1,273,654
SCOTTSVILLE	Pope	Atoka	1960		0	158,111
SCRANTON	Johnson	Atoka	1960		2,186,844	83,337,062
		Morrow				-
SECTION 10	Crawford	Atoka	1920		0	3,804,847
		Uncontrolled			42,413	519,243
SHIBLEY	Crawford	Atoka	1927		0	9,793,741
		Uncontrolled			169,399	2,209,856
SILEX	Pope	Atoka	1942		861,181	45,178,115
		Morrow				-
		Uncontrolled			0	170,540
SLAYTONVILLE	Sebastian	Atoka	1971		126,027	2,631,562
SMOKEY ROAD					0	142,935
SPADRA	Johnson	Atoka	1954		1,954,033	392,617,460
	Logan	Morrow				-
ST. VINCENT	Conway	Morrow	1976	1983	0	-
SUGAR GROVE	Logan	Atoka	1966	1976	0	-
Sugarloaf Mountain					412,811	412,811
SUNSET	Washington	Wedington	1988		2,503	111,093
TATES ISLAND	Pope	Atoka	1929	1985 TA	0	8,253,135
TUCKS CHAPEL	Benton	Everton	1967	1968	0	-
UNION CITY	Johnson	Atoka	1958		1,512,760	126,891,669
		Morrow	1958			-
URSULA	Sebastian	Atoka	1963		395,888	19,651,356
		Uncontrolled			19,930	486,401
VESTA	Franklin	Atoka	1932		1,378,042	14,733,554
		Atoka	1961			23,574,350

FIELD	COUNTY	FORMATION	YEAR OF DISCOVERY	YEAR ABANDONED	2006 ANNUAL GAS (MCF)	CUMMULATIVE MCF
		Morrow				-
		Uncontrolled			58,479	519,446
WATALULA	Franklin	Atoka	1953		77,921	4,828,871
WAVELAND	Yell	Atoka	1966		18,187,652	58,846,018
WEDINGTON	Washington	Sylamore	1983		0	849,033
WEST FORK	Washington	Sylamore	1953		0	1,332,832
WHITE OAK	Franklin	Atoka	1943		4,629,110	279,171,815
		Morrow	1958			-
		Boone				-
		Penters				-
WHITE ROCK MOUNTAIN	Franklin	Morrow	1984		33	184,697
		Wedington				14,201
WILLIAMS	Crawford	Atoka	1918			50,914,022
		Uncontrolled				-
WILLIAMS DEEP		Uncontrolled			166,477	2,033,021
WILLIAMS SHALLOW					4,134	48,995
WINSLOW	Washington	Wedington	1987		18,791	2,501,968
WITCHERVILLE	Sebastian	Atoka	1970		1,558,994	35,013,800
WONDERVIEW	Conway	Fayetteville			0	25,872
WYMAN	Washington	Sylamore	1985		-	-
					-	-
TOTAL					264,369,033	6,501,416,201

**Arkansas Brine Production
1979 – 2006**

YEAR	BARRELS
1979.....	113,592,673
1980.....	183,875,440
1981.....	191,624,074
1982.....	189,407,705
1983.....	201,231,245
1984.....	235,726,972
1985.....	208,648,907
1986.....	203,240,401
1987.....	205,044,975
1988.....	222,819,711
1989.....	235,804,261
1990.....	241,020,532
1991.....	235,988,715
1992.....	231,928,936
1993.....	237,747,546
1994.....	275,331,857
1995.....	311,439,117
1996.....	324,756,326
1997.....	352,622,166
1998.....	324,727,490
1999.....	301,514,302
2000.....	321,518,739
2001.....	309,000,330
2002.....	322,563,813
2003.....	301,118,442
2004.....	326,469,195
2005.....	251,628,561
2006.....	293,118,746

**Brine Production
2006**

FIELD	BARRELS
Atlanta.....	3,783,981
Big Creek	3,905,845
Burns Pond.....	10,339,980
Cairo.....	11,476,523
Catesville.....	42,339,568
Hibank.....	9,732,457
Hogg.....	2,952,327
Kerlin	17,997,634
Kilgore Lodge	38,923,519
Lisbon	15,158,808
Magnolia	17,937,235
Marysville	48,709,976
Shuler East	5,984,385
Village.....	21,568,310
Warnock Springs.....	23,194,336
Wilks	18,512,170
TOTAL	352,622,166