

Annual Report of Production 2012

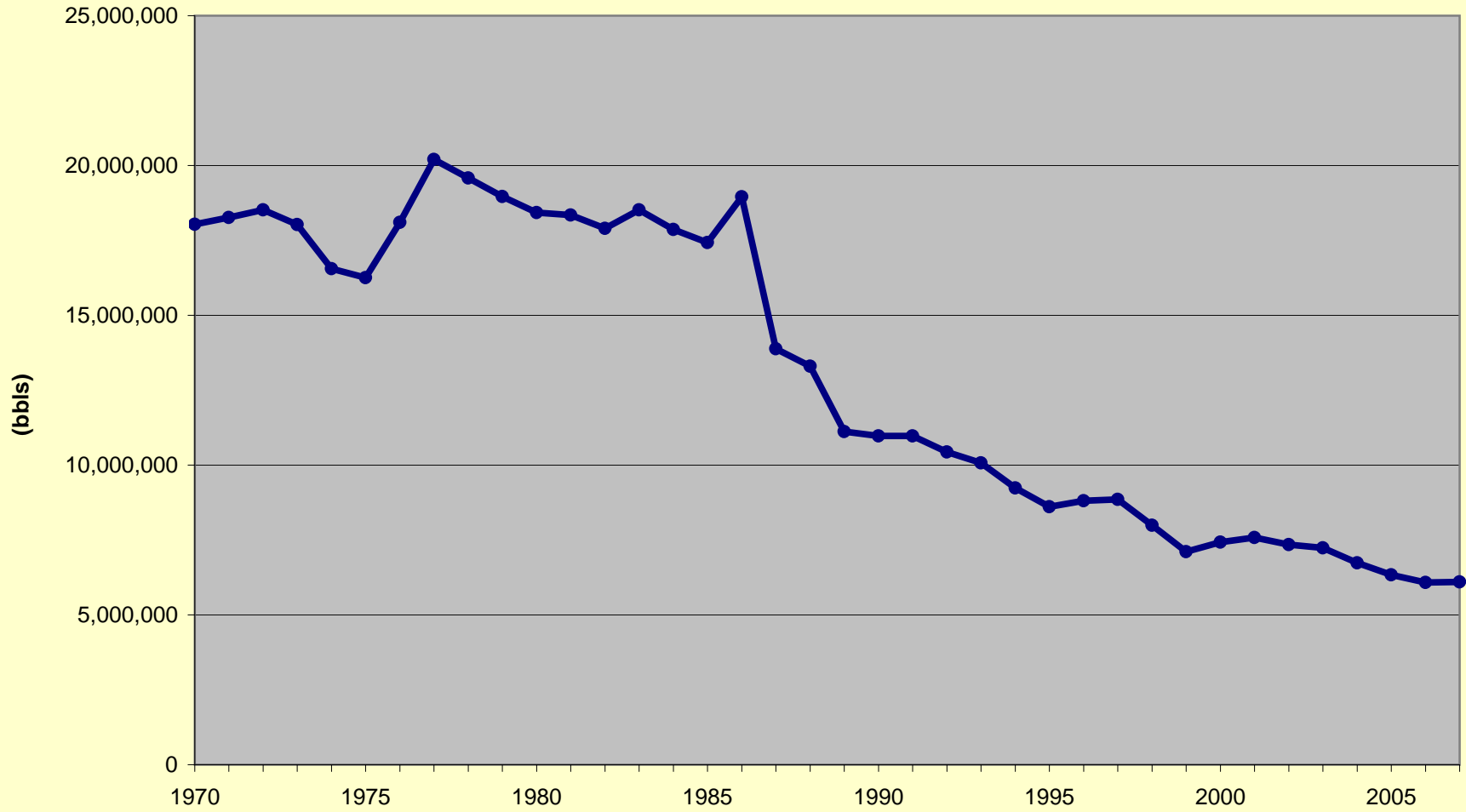
Arkansas Oil and Gas Commission
Lawrence E. Bengal, Director

Table of Contents

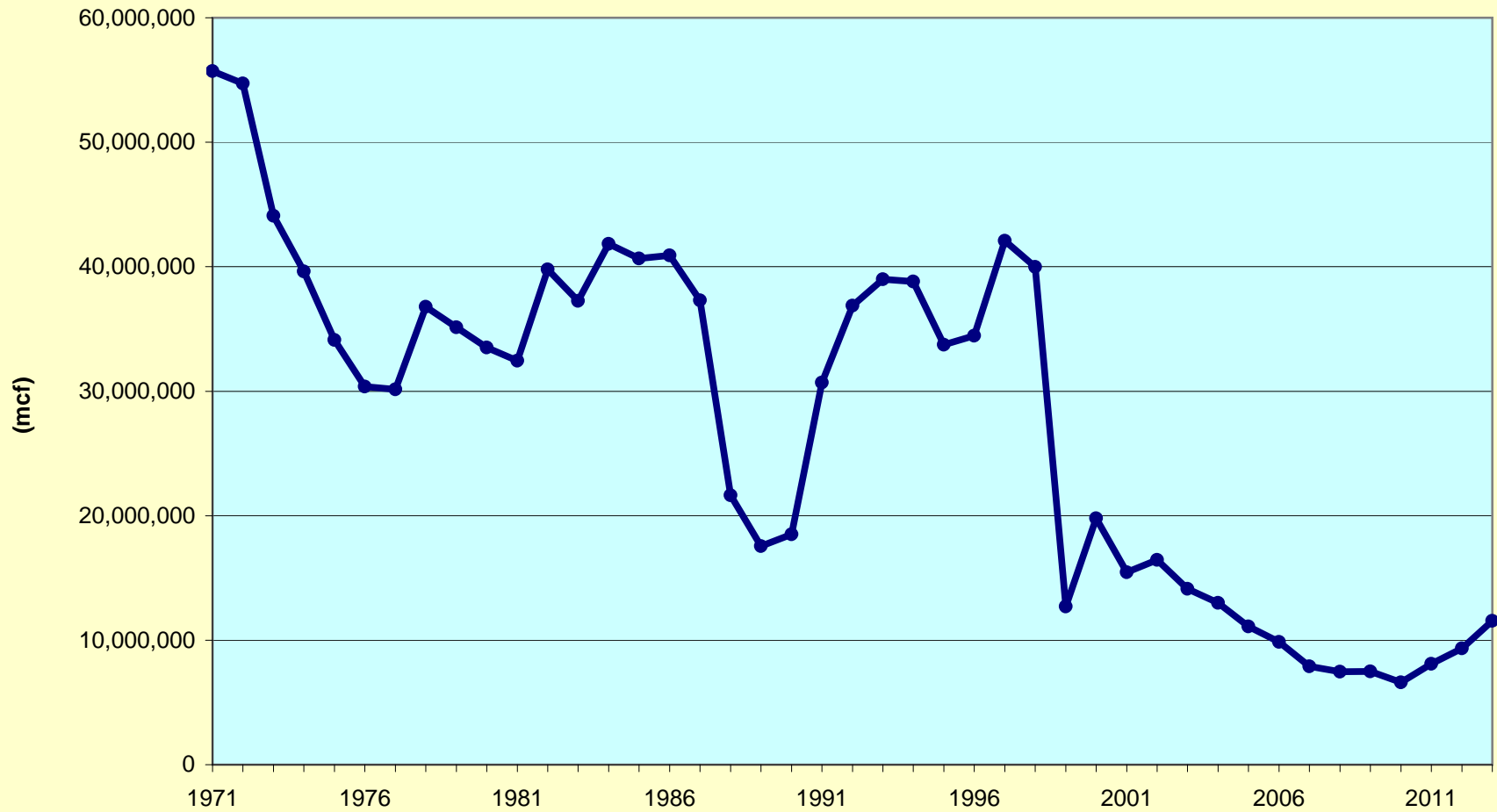
Informational Graphs	3
Report of Secondary Recovery Projects	10
South Arkansas Production Data	15
North Arkansas Production Data	34
Arkansas Brine Production	41
Brine Production 2012 By Field	42

Informational Graphs

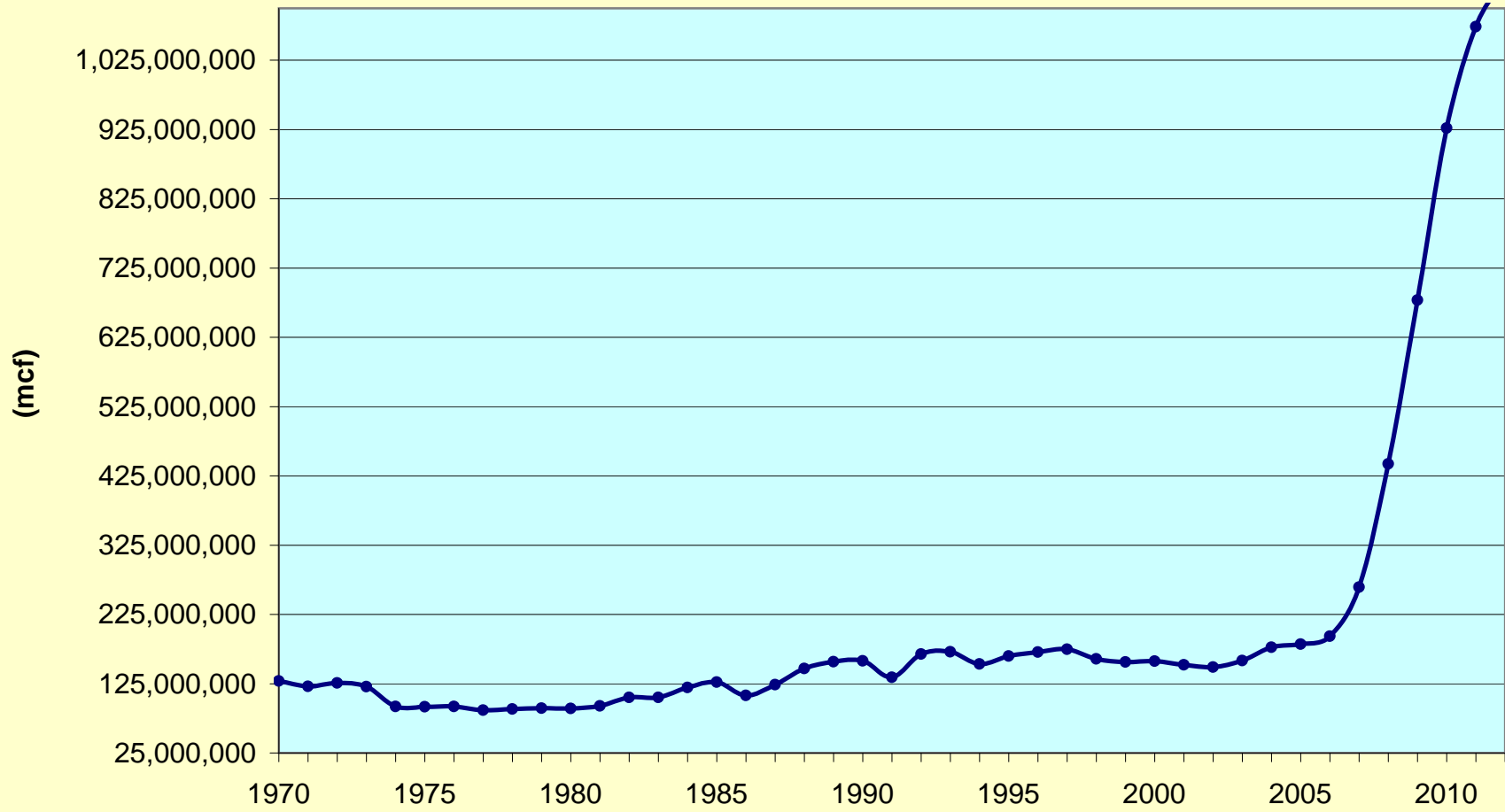
Oil Production



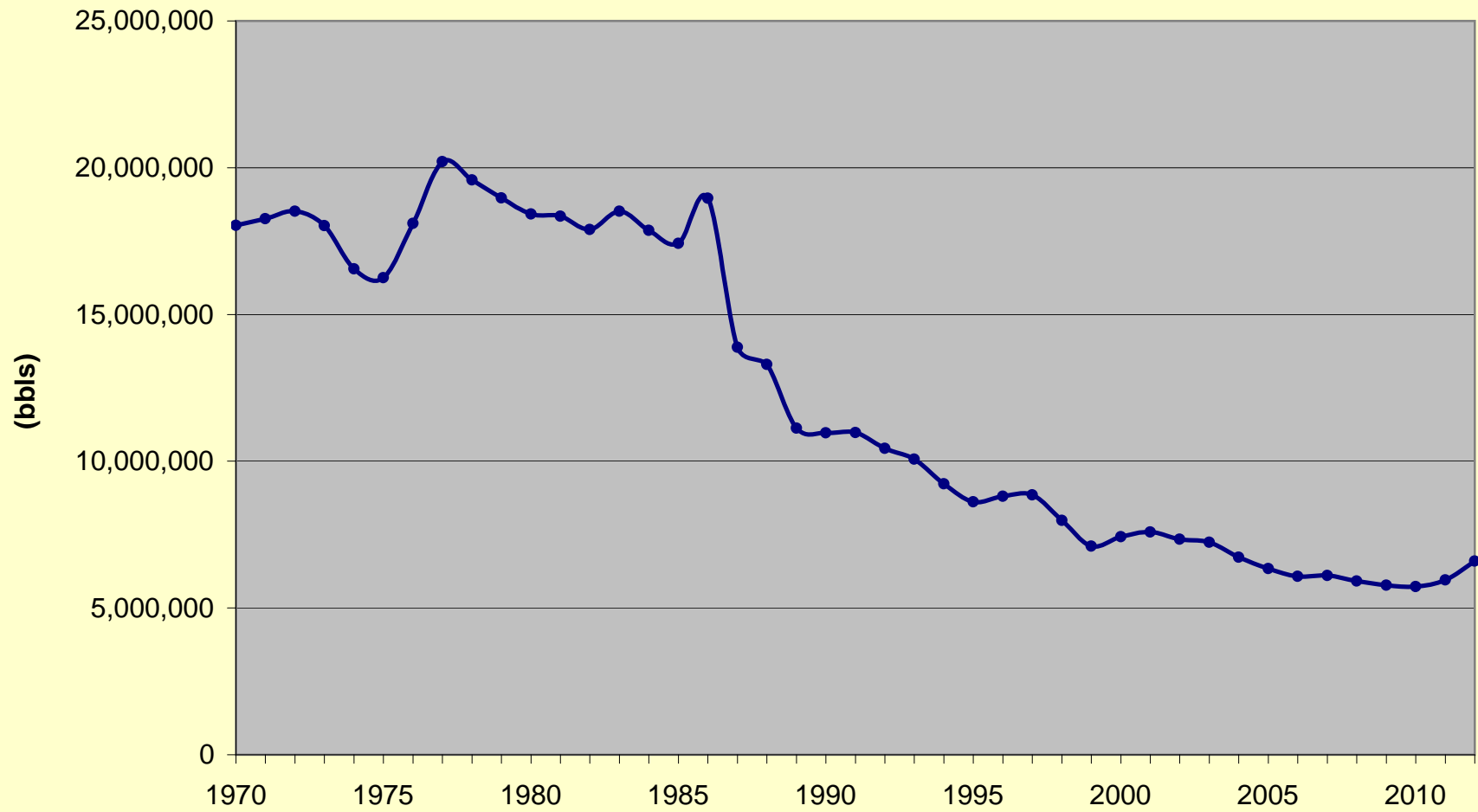
South Arkansas Gas Production



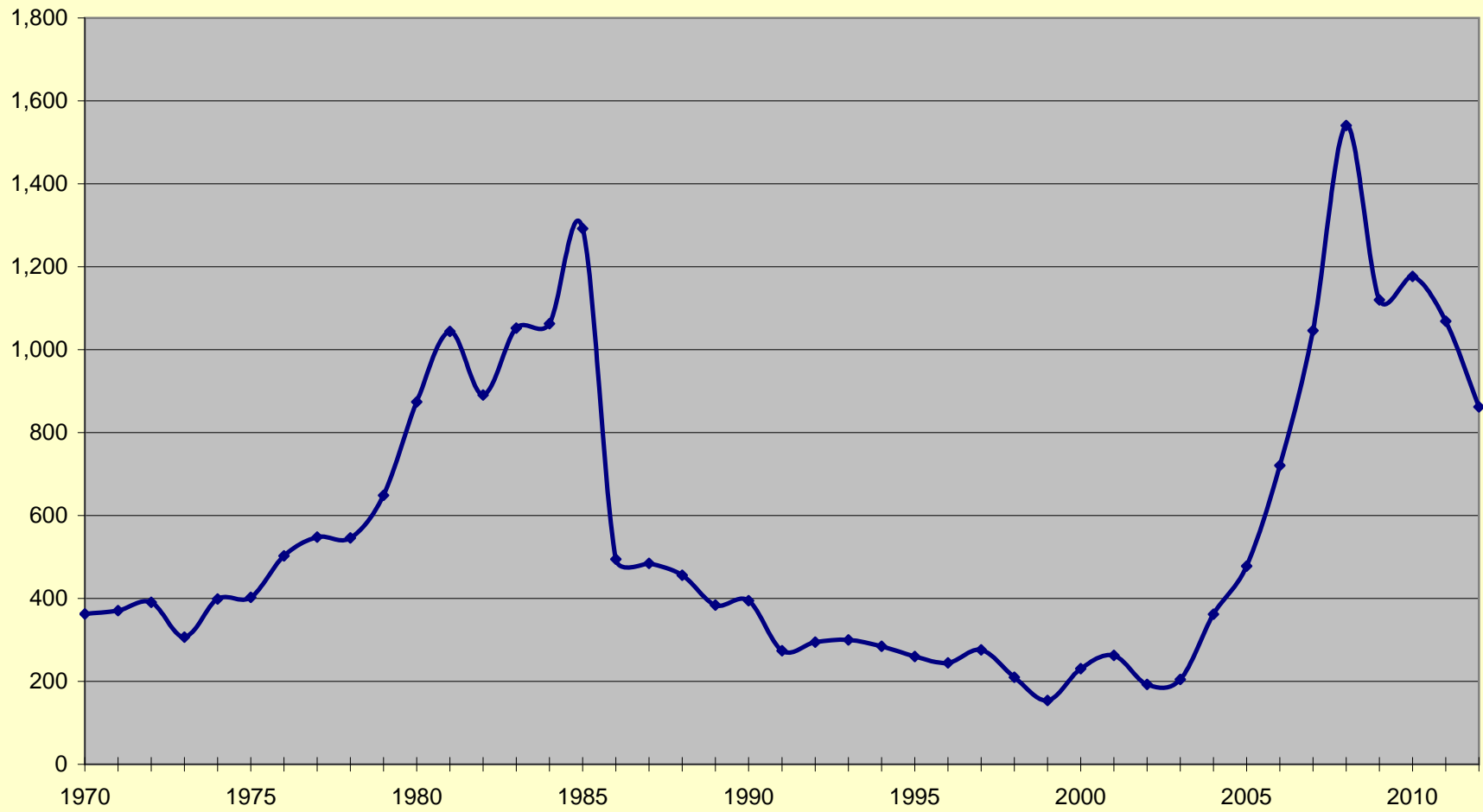
North Arkansas Gas Production



South Arkansas Oil Production



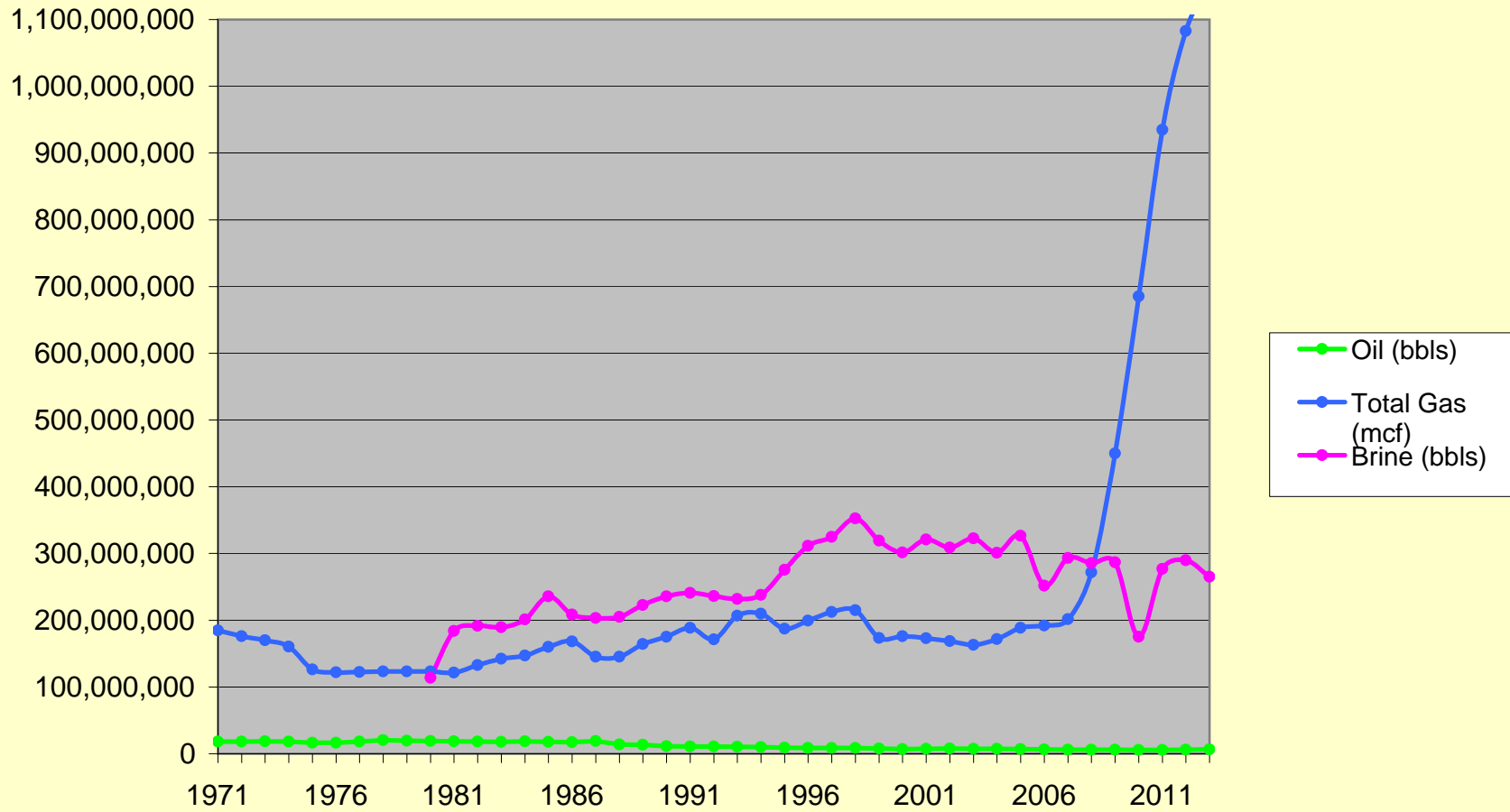
Drilling Permits Issued



Brine Production



Oil, Brine, Gas Production



Report of Secondary Recovery Projects

PRESSURE MAINTENANCE AND SECONDARY RECOVERY AND UNITIZED PROJECTS IN SOUTH ARKANSAS

FIELD/ RESERVOIR	COUNTY	YEAR DISCOVERED	DATE UNITIZED	ORDER NUMBER	DATE OF INJECTION	FLUID INJECTED	ACRES	PAY THICKNESS ft.	POROSITY %	PERME- ABILITY md.	CONNATE WATER %	OIL IN PLACE MBbls.	RECOVERY		ANNUAL OIL Bbls.	ANNUAL GAS MCF	CUMMULATIVE OIL Bbls.	CUMULATIVE GAS MCF
													PRIMARY %	SECONDARY %				
BODCAW Kilpatrick	Nevada	1950	9-1-74	40-74		Water	410	13.0	20.0	150	38	3,809	27	30	2,225		243,506	
BUCKNER Smackover	Columbia & Lafayette	1997	6-1-97	24-97			2160								12,481		692,383	
BUENA VISTA Buckrange	Ouachita	1952	6-1-64	24-64	6-23-64	Water	400	5.0	34.1	331	35	1,532	21	45			1,245	
CAMP CREEK Blossom	Union	1959	11-7-62	45-62	1-5-63	Water	440	4.0	27.0		31	2,313	25	35	2,996		72,585	61
CATESVILLE Cotton Valley & Jones Smackover	Union Union	1950 1950	8-1-56 8-1-56	22-56 22-56		None None	1505 435	5.0 6.0	27.0 24.0		50 34	9,719 2,096	20 25	25 35	4,190		1,552,183 588,952	231,084
CHALYBEAT SPRINGS Smackover	Columbia	1972	11-24-75	57-75		Gas	6144	43.0	14.0	156	30	133,881	22	37	1,938	75,219	3,437,414	35,753,657
CHAMPAGNOLLE LANDING Baker	Union	1958	9-1-75	45-75		Water	1120	7.0	31.0	2,661	35	7,786	23	40	8,814		997,157	
CHARIVARI CREEK Nacatoch	Bradley	1964	5-1-84	139-84	10-1-84	Water	549	15.2	32.0	222	50	5,894	8	12	16,343		513,779	
CHRISTMAS 1st Sturgis	Miller	1957	2-1-67	3-67	2-1-67	Water	410	8.5	24.8	659	39	2,200	10	19	2,761		314,086	
DAYS CREEK Smackover	Miller	1973	2-1-79	5-79	8-1-79	Water	720	72.0	20.0		20	15	34	44	25,594		4,268,428	2,894,715
DORCHEAT-MACEDONIA Cotton Valley	Columbia	1939	4-6-43	3-43		None	1120	60.3	15.0	100	30	57,000			391,338	2,674,723	2,495,260	15,689,429
FOUKE Beauford 1st Tokio 1st Sturgis Sand 1st Sturgis-C Nesbitt "A" 1st Stur. SUSW PSU STURGIS "C"	Miller Miller	1940 1955	4-1-65 12-1-72	13-65 53-72	4-27-65	Water Water	520 340	15.0 10.0	25.6 34.5	1,194 244	18 37	4,800 2,262	22 26	32 37	1,854 1,974 1,318		1,066,801 222,629 19,678 1,643,488 492,903 362,061 113,588	
FOUKE N. Tuscaloosa	Miller	1951	7-11-63	33-63	10-2-63	Water	160	4.0	31.1	568	46	587	21	41	7,390		281,733	
GRAYSON Smackover	Columbia	1993	7-1-95	41-95	10-25-95	Gas & Water	1240	100	19.0	400	34	34,066	25	45	280,290	414,753	14,662,310	11,991,932
HAYNESVILLE Pettet Smackover "B"	Columbia Columbia	1942 1959	5-1-44 12-1-64	7-44 68-64	7-1-46	Water Gas	3426 112	9.4 5.0	18.0 12.9	0-50 152	22 23	26,375 27	28 19	28 42	13	9,020	6,056,764 32,275	613,763
HORSEHEAD Pettet	Columbia	1952	4-1-57	17-57	12-26-57	Water	2919	7.5	18.0	0-50	22	17,828	24	35			2,308,136	
IRMA Nacatoch	Nevada	1921	6-1-67	42-67	7-21-67	Water & Steam	1840	13.0	40.0	300	33	51,500			26,845		1,484,869	
KELLY BAYOU Jeter	Miller	1962	11-21-63	56-63	12-1-64 5-22-64	Gas & Water	4320	8.0	22.0	100	29	29,307	24	35	8,328		4,469,259	6,182,302
KERLIN Pettet	Columbia	1972	12-31-82	224-82	5-1-83	Water	5120	4.0	14.8	22	29	9,648	17	27	26,826		2,285,998	
KIBLAH Gloyd															736		18,441	
KRESS CITY Ford	Lafayette	1957	11-1-80	134-80	1-1-81	Water	1590	3.8	12.0	48	15	2,000	24	35	4,071		277,463	124,721
LAKE ERLING Smackover															3,311	83,089	56,287	1,472,829

PRESSURE MAINTENANCE AND SECONDARY RECOVERY AND UNITIZED PROJECTS IN SOUTH ARKANSAS

FIELD/ RESERVOIR	COUNTY	YEAR DISCOVERED	DATE UNITIZED	ORDER NUMBER	DATE OF INJECTION	FLUID INJECTED	ACRES	PAY		PERME- ABILITY md.	CONNATE WATER %	OIL IN PLACE MBbls.	RECOVERY		ANNUAL OIL Bbls.	ANNUAL GAS MCF	CUMMULATIVE OIL Bbls.	CUMULATIVE GAS MCF
								THICKNESS ft.	POROSITY %				PRIMARY %	SECONDARY %				
LAKE ERLING SOUTH Smackover	Lafayette	1985	12-1-92	85-92	8-1-93	Gas	1600	124.0	9.0		22	5,362	22.2	21	1,464	29,468	785,747	11,819,609
LANE ROAD Cotton Valley	Union		04-01-12	053-2012-03			220.00								1,311		1,311	
LAPILE Cotton Valley	Union	1989	8-1-89	57-89	8-1-90	Water	285	5.3	23.6	51	40	1,521	35	45	3,037		237,199	
LEWISVILLE Lime	Lafayette	1969	5-1-75	21-75	8-1-75	Gas & Water	458	140.0	24.0	44	30	18,130	25	39	83,087	222,685	4,837,338	9,993,876
Lewisville Old Town Tuscaloosa																		
LEWISVILLE W. Smackover	Lafayette	1971	9-1-86	145-86	9-1-86	Water	160	25.0	29.6	16	11	6,040	17	32	5,677	2,213	473,353	191,861
LICK CREEK Meakin	Bradley	1957	1-1-75	62-74	2-1-76	CO ₂	1533	12.0	33.0	1,200	32	23	18	22	16,057		2,596,630	
LISBON N.W. Blossom	Union	1957	12-1-64	69-64	1-1-63	Water	500	9.0	27.00	526	31	7,332	25	35	18,492		1,528,804	
MAGNOLIA Smackover	Columbia	1938	4-1-56	7-56	8-21-64 1-31-45	Gas Water	4494	106.0	16.5	1,085	30	288,200	49	60	190,070	269,695	87,792,218	29,400,927
MAYTON Paluxy	Miller	1967	1-27-71	9-71	7-1-62	Water Gas	220	12.0	26.0		35	1,762	9	20	2,458		264,741	
MIDWAY Smackover	Lafayette	1942	2-1-56	1-56	4-1-43	Water	2520	62.8	26.0	150	20	150,001	40	50	85,623	102,727	49,576,313	24,377,611
MIDWAY WEST Smackover	Lafayette	1953	1-18-61	5-61	2-15-61	Water	240	27.5	25.4	10	28	8,327	15	27			2,424,553	
MCKAMIE-PATTON Smackover	Lafayette	1940	12-1-48	33-48	8-1-49	Gas	6580	122.0	15.0	459	36	31,878	24 O 60 C	36 73	14,348	235,588	32,858,890	586,584,394
James Lime MCNEIL EAST Pettet	Lafayette Columbia	1982	12-1-82	229-82	4-1-85	Water	3988	4.3	15.0	30	30	7,490	20	31	15,162		1,091,600	73,660
PLAINFIELD Cotton Valley	Columbia		7-1-2004	47-2004-05			1122	11.4	13.0	20		2,258	24	39	291		8,554	
RED ROCK Pettet	Columbia	1975	7-1-85	188-85	1-1-86	Water	1336	5.1	15.5	14	24	5,433	24	37	876		27,766	611
RITCHIE Baker	Union	1963	12-18-68	65-68	1-12-69 5-1-70	CO ₂ Water	550	7.0	30.7	2,754	20	3,250	14	30	1,632		793,253	
RODESSA Gloyd	Miller	1937	6-1-88	37-88			1594	15	20	79	26	19,400	25	36	14,028		683,849	
SANDY BEND Nacatoch	Union	1947	6-1-67	33-67		None	1000	5.0	25.0		50	25,000	11	17	7,225		1,269,165	
SHULER Hill Pettet C.V. Jones	Union	1937	2-15-41	6-41	6-1-44	Water	4216	33.4	20.2	355	30	101,471	36	70	7,225	2,307	6,661,591	225,942
SMACKOVER Nacatoch - (T.C. Murphy)	Union	1922	5-21-69	22-69	9-1-69	Steam	40	110.0	20.0	2,000	25	4,814	20	25	5,536		472,457	
Nacatoch-STRU Nacatoch-985	Union Ouachita	1922	8-1-69 9-16-70	30-69 49-70	12-1-69 9-1-72 3-3-71	In situ comb. Water Steam	160 985	54.0 34.0	20.0 36.0	2,000 2,000	25 30	9,452 61,199	20 20	27 25	4,255 98,953		471,547 12,860,969	
Meakin-NAC O. Meakin-Wells	Ouachita Ouachita	1923 1923	7-28-71 2-1-73	40-71 5-73	10-3-71 4-9-71	Water Water	130 660	13.0 13.0	30.0 30.0		35 35	2,131 10,819	15 15	30 30	104,051 2,311		104,051 358,250	
SPRINGHILL Pettet	Lafayette		9-1-2004	102-2004-08			1145								72,095	6,725	669,926	997,297

South Arkansas Production Data

SOUTH ARKANSAS RESERVOIR DATA

See last page for key to Abbreviations.

						PRODUCTION		
FIELD/ COUNTY	FORMATION	DEPTH (Ft.)	YEAR OF DISCOVERY	YEAR ABANDONED	API GRAVITY	2012	2012	CUMMULATIVE OIL (Bbls.)
						ANNUAL OIL (Bbls.)	ANNUAL GAS (MCF)	
AGNES ROAD Union	Smackover	6,690	1985	1995	37			23,308
AGNES ROAD NORTH Union	Cotton Valley	6,800	1989		45			33,358
ARKANA Lafayette	Buckrange	2,730	1993		27			7,418
	Tokio	2,986	1984		32	14		121,582
	Pettet	6,250	1983		41			64,625
	Cotton Valley	8,676	1981		48	12	197	70,640
	Haynesville	10,880	1983		52	1,482	15,926	16,944
	Smackover	11,316	1992		42	1,180		79,401
ARTESIAN Calhoun	Meakin	2,560	1952		17	824		909,353
ARTESIAN EAST Calhoun	Blossom	2,854	1981	1992	14			2,202
ARTEX Miller	Paluxy	3,140	1980		26	4,167		315,041
	Travis Peak	5,715	1979	1980				2,751
ASH BRANCH Union	Cotton Valley	6,800	1976	1993	39			36,210
ATLANTA Columbia	Pettet	4,620	1983		41	3,736		192,823
	Cotton Valley	7,210	1943		42	5,713	1,318	31,831,790
	Jones	8,120	1981	1990 TA	41			21,200
	Smackover	8,210	1938		46	5,507	2,200	20,948,390
	C.V. & Smk.	8,400	1987					14,856
	Nacatoch							1,901
	Tokio					100		1,040
ATLANTA EAST Columbia	Cotton Valley	7,768	1971		42			583,656
	Jones	8,628	1971	1971	42			9,631
AURELLE Union	Nacatoch	2,303	1980		24	1,304		69,710
BARLOW BRANCH Columbia	Smackover	7,810	1974	1990 TA	38			242,575
BEAR CREEK Union	Travis Peak	3,800	1961		44			417,397
	Smackover	6,317	1967		29	1,073		1,293,100
BEECH CREEK Union	Tuscaloosa		1949	1955		1,614		4,333
	Cotton Valley	6,604	1972	1986 TA	40			27,081
BEECH CREEK WEST Union	Pettet	3,946	1984		44	5,837		811,404
	Cotton Valley	6,700	1983		43	-		346,977
BEECH HILL Union	Smackover	7,214	1978	1975	36			132
BENJAMIN LAKE Union	Meakin	2,550	1959		18	4,161		440,791
BERRY Union	Graves	2,627	1975		14	2,170		138,757
BERT CREEK Union	Smackover	7,210	1978		38			411,280
	Cotton Valley	5,322	1991		40.1			173,792
BETHEL CHURCH Union	Smackover	7,313	1978	1987	42			48,665
BETHLEHEM Union	Rodessa	3,370	1966	1992	42			67,178
BIG BRANCH Lafayette	Tuscaloosa	2,750	1982	1997	21			3,991
	Paluxy	2,973	1981	1997	25			27,895
BIG BRANCH EAST Lafayette	Smackover	7,434	2005					2,764
BIG CREEK Columbia	Smackover	7,900	1974		34	-		214,698
BIG CREEK EAST Columbia	Pettet	4,610	2007	2008	38			726
BLOOMBURG Miller	Smackover	10,446	1984	1986	54			5,076
BODCAW	Kilpatrick	2,550	1950		30	2,225		1,263,764

See last page for key to Abbreviations.						PRODUCTION		
FIELD/ COUNTY	FORMATION	DEPTH (Ft.)	YEAR OF DISCOVERY	YEAR ABANDONED	API GRAVITY	2012	2012	CUMMULATIVE OIL (Bbls.)
						ANNUAL OIL (Bbls.)	ANNUAL GAS (MCF)	
Nevada	Hill	2,850	1950		29	43		450,079
BODCAW CREEK	Pettet	5,986	1984	1987	38			4,327
Lafayette								
BOGGY BOTTOM	Tokio	2,390	1984	1985	37			497
Union	Tuscaloosa	3,150	1966	1985	52			122,248
	Hogg	3,785	1965		47	893		216,472
BOGGY CREEK	Paluxy	3,859	1981		32	6,595		523,647
Miller								
BOIS D'ARC	Smackover	5,966	1972	1990	30			15,932
Hempstead								
BOLDING	Cotton Valley	4,145	1985	1990	52			29,907
Union								
BOYCE LAKE	Smackover	7,740	1981	1983	68			8,600
Miller								
BOYD	Smackover	6,588	1984	1996	70			17,480
Miller								
BOYD HILL	Smackover	6,622	1984	1996	11			19,496
Miller								
BRADLEY	Buckrange	2,773	1981		26			69,689
Lafayette	Buckrange (Old)	2,786	1925		26	-		207,419
BRADLEY SOUTH	Tokio					5,484		76,946
Lafayette								
BRADLEY WEST	Hill	5,860	1955	1984	39			199,566
Lafayette	Mitchell	6,010	1954		44	1,471		4,792,727
	Pettet	6,670	1984	1988	35			5,847
BRAGG	Nacatoch	1,356	1982		16	717		21,295
Ouachita								
BRISTER	Smackover	8,501	1969	1982	71			87,775
Columbia								
BRUSHY LAKE	Paluxy	3,390	1965	1969	25			4,187
Lafayette								
BUCKNER	Tokio	2,503	1969	1970	14			60
Lafayette &	Hill	3,562	1963	1964	24			1,190
Columbia	Travis Peak	4,800	1946		34	23,462		7,800,792
	Smackover	7,160	1937		32	17,892		13,437,856
BUENA VISTA	Nacatoch	1,270	1956		14	4,157		304,144
Ouachita	Buckrange	1,960	1952		26			310,968
BURDELL BRANCH	Kilpatrick	2,598	1975	1987	48			23,210
Nevada								
BURNS POND	Smackover	7,450	1986		39	-		580,179
Union								
BURNSIDE CREEK	Rodessa	3,354	1975		37			56,158
Union	Travis Peak							3,169
CAIRO	Jones	7,650	1984	1990 TA	29	-		886
Union	Smackover	7,740	1948		37	2,947		7,301,086
CAIRO EAST	Cotton Valley		1983	1983				107
Union	Smackover	7,761	1980	1983	33			3,713
CALHOUN	Smackover	8,260	1944	1970	50			550,785
Columbia								
CALION	Meakin		1957	1959				165
Union	Graves	2,490	1952		15	3,567		352,273
	Blossom	2,600	1952		22	1,025		634,418
	Travis Peak	3,470	1957			4,181		692,662
	Cotton Valley	3,535	1983		31	4,360		269,850
	Nacatoch							4,497
CALVARY CHURCH	Cotton Valley	5,534	1975	1987	GAS			10,456
Union								
CAMP CREEK	Meakin	2,310	1960		24	3,025		208,848
Union	Blossom	2,650	1959		24	2,996		1,062,443
	Tokio	2,670	1980		29	10,953		753,597
CANFIELD	James	5,063	1982		40			96,418
Lafayette	Cotton Valley		1952	1952				5,286

See last page for key to Abbreviations.						PRODUCTION		
FIELD/ COUNTY	FORMATION	DEPTH (Ft.)	YEAR OF DISCOVERY	YEAR ABANDONED	API GRAVITY	2012 ANNUAL OIL (Bbls.)	2012 ANNUAL GAS (MCF)	CUMMULATIVE OIL (Bbls.)
CAREYVILLE LANDING	Blossom	2,740	1962		19	-		110,923
Bradley	Travis Peak	2,901	1966	1966 TA	20			7,388
	Cotton Valley	3,379	1960		19	3,940		116,382
CATESVILLE	Nacatoch		1994					184
Union	Cotton Valley	6,422	1973		40	4,190		1,813,232
	Cotton Valley	6,500	1950		38			
	Cotton Valley	6,600			40			
	Cotton Valley	6,625			41			
	Jones	7,570			41			
	Smackover	7,700	1950	1976 TA	42	-		588,957
CENTER	Hogg	3,175	1953		30	7,384		2,890,163
Ouachita								
CENTRAL CHURCH	Paluxy	3,264	1984		27	969		145,883
Miller								
CHALYBEAT SPRINGS	Cotton Valley	8,843	1971	1976 TA	43			138,877
Columbia	Smackover	10,126	1972		45	1,938	75,219	15,013,605
CHAMPAGNOLLE	Graves	2,580	1929		28	95,729		33,264,002
Union	Blossom	2,690	1928			-		1,744
	Meakin	3,359	2004			80		5,246
	Tokio	2,780	1928			-		4,491
	Travis Peak	2,990	1927		26			
	Travis Peak	3,629	1964		28	907		450,500
	Cotton Valley	3,995	1965		36	24,036		2,607,757
	Cotton Valley	4,175	1970		38			
	Smackover			1946				
MOODY AREA	Travis Peak			1973				4,618
CHAMPAGNOLLE LNDG.	Baker	2,602	1958		16	8,814		3,206,059
Union								
CHARIVARI CREEK	Nacatoch	2,380	1963		19	16,343		846,484
Bradley								
CHICKEN CREEK	Tokio	3,210	1966	1967	21			1,570
Miller	Paluxy	3,886	1986		33.6	-		69,347
CHICKEN CREEK S.W.	Paluxy	3,760	1996		30	1,401		26,207
Miller								
CHRISTMAS	Tuscaloosa	3,650	1961			529		77,936
Miller	1st Sturgis	3,112	1957			2,761		1,283,786
	2nd Sturgis	3,175	1960	1977 TA				74,349
	3rd Sturgis	3,332	1960	1964 TA				6,259
	4th Sturgis	3,345	1957	1962 TA				48,469
	Paluxy	3,120	1983		31	1,219		20,912
	Hill	4,620	1984		46			73,433
CLEAR CREEK	Tokio	2,432	1956	1957	15			6,015
Lafayette								
CLEVELAND BRANCH	Smackover	7,200	2005			23,680	6,433	292,610
Lafayette								
COLLEGE HILL	Smackover		1948	1949				5,755
Columbia								
COLUMBIA	Pettet	4,559	1978		40	30,291	604	184,162
Columbia	Smackover	8,030	1942	1950	65			10,401
CORINTH CHURCH	Smackover	10,126	1972	1975	46			7,521
Columbia								
CORNIE CREEK	Cotton Valley	7,166	1972	1994	40			130,228
Union	Cotton Valley	7,230	1975		40			
	Cotton Valley	8,621	1976		62			
CORNISH BRANCH	Mitchell	5,700	1964		40	4,490		1,337,262
Lafayette	Cotton Valley	8,818	1975	1979	50			8,604
	Haynesville					-		4,646
CRAIG	Arkadelphia	2,125	1965	1984	42			4,629
Union	Tuscaloosa	3,030	1966	1987	31			28,687
CRAIN CITY	Baker	2,642	1976		16	2,303		419,238
Union								
CROSS COUNTRY SL.	Baker	2,570	1959		16			1,093,391
Calhoun	Graves	2,596	1980	1989 TA	16			8,435

See last page for key to Abbreviations.						PRODUCTION		
FIELD/ COUNTY	FORMATION	DEPTH (Ft.)	YEAR OF DISCOVERY	YEAR ABANDONED	API GRAVITY	2012	2012	CUMMULATIVE OIL (Bbls.)
						ANNUAL OIL (Bbls.)	ANNUAL GAS (MCF)	
	Travis Peak	3,040	1985		29	337		49,639
CROSSETT	Cotton Valley	3,726	1980		18	8,161		273,409
Ashley								
CUMMINGS	Smackover	8,681	1977	1993	66			235,825
Miller	Rodessa	5,141	1997		30	1,898	515	124,563
CUMMINGS EAST	Rodessa					-		2,769
Miller								
CURTIS CREEK	Hill	3,118	1981		39	5,501		1,838,482
Union	Tuscaloosa	3,106	1989		43	100		73,300
CYPRESS	Haynesville	10,704	1996		60	8,351	261,678	274,586
Columbia								
CYPRESS CREEK	Graves	2,755	1967	1984 TA	16			83,915
Union	Blossom	2,840	1968		21	2,186		89,628
	Tokio	2,875	1964		26	3,666		259,543
	Travis Peak	2,900	1961		30	1,591		895,078
CYPRESS LAKE	Paluxy	4,690	1985	1988				219,572
Miller	Paluxy	4,100	1995			1,901	786	79,388
Lafayette & Miller	Paluxy-Stewart							
	Kilpatrick			1963				707
	Hill	4,690	1958	1960				5,321
CYPRESS LAKE SOUTH	Ford	8,359	1985	1985	63			
Miller								16,833
CYPRESS LAKE WEST	Smackover	8,359	1985	1993	63			20,539
Miller								
DAYS CREEK	Smackover	8,152	1972		47	25,594		8,063,368
Miller	Cotton Valley	7,362	1992		43			31,623
DAYS CREEK SOUTH	Smackover	8,520	1986	1995	68			4,540
Miller	Cotton Valley	7,584	1994					898
DICKSON ROAD	Smackover	7,932	1980	1988	35			26,545
Columbia								
DODDRIDGE	Pettet	6,875	1987		41			53,351
Miller								
DODDRIDGE WEST	Anhydrite	6,150	1959	1959	36			954
Miller								
DOOLEY CREEK	Buckrange	2,770	1954		28			336,909
Lafayette	Smackover	10,935	1970	1972	48			30,323
DORCHEAT-MACEDONIA	Rodessa	4,500	1955		33	18,005		1,750,764
Columbia	Rodessa	4,674	1988					
	James	4,775	1957			4,541		346,720
	Pettet	5,172	1970		41	18,291		1,123,781
	Travis Peak	5,944	1950		43	975	1,448	1,025,745
	Travis Pk/Cotton Val.							5,834
	Cotton Valley	8,010	1943		38-72	1,188,918	7,271,733	37,738,493
	Buckner	7,914	1984	1985	46			270
	Smackover	8,870	1939			19,998		9,621,078
DRY CREEK	Graves	2,740	1986	1992	20			619
Union	Tokio	2,910	1958	1958	32			1,826
DRY FORK	Tokio	3,200	1989		41			92,490
Lafayette								
DUTY	Mitchell	5,768	1979		43			631,092
Lafayette								
EL DORADO EAST	Nacatoch (Old)	2,170	1921		20	14,961		12,438,586
Union	Meakin	2,500	1956	1969	23			14,571
	Blossom	2,750	1953	1968	24			7,667
	Tokio	2,919	1986			5,066		36,307
	Saulsbury	2,935	1954	1967	27	-		9,339
	Cotton Valley	4,990	1983		32	27,184		95,606
	Travis Peak	4,000	1970		20	8,774		52,554
AMASON AREA	Blossom							21,694
	Graves			1958				19,844
	Saulsbury	2,935	1954	1990 TA	27			330,167
	Travis Peak	2,962	1971		44	1,277		137,780

See last page for key to Abbreviations.						PRODUCTION		
FIELD/ COUNTY	FORMATION	DEPTH (Ft.)	YEAR OF DISCOVERY	YEAR ABANDONED	API GRAVITY	2012	2012	CUMMULATIVE OIL (Bbls.)
						ANNUAL OIL (Bbls.)	ANNUAL GAS (MCF)	
EZZELL AREA	Nacatoch	2,130	1951		21	528		40,848
	Meakin	2,500	1956		23	3,918		117,373
	Graves	2,675	1952		23	2,928		34,341
	Blossom	2,750	1953		24	496		62,904
	Tokio	2,880	1951		21	1,373		13,686
	Hogg	3,400	1956	1986	34			23,135
	Saulsbury	2,925	1951		26	4,319		72,275
	Travis Peak	2,962	1951		29	13,662		264,407
	Cotton Valley	5,951	1969		36	6,208		2,032,305
	Smackover	6,210	1969		22	-		396,031
SAULSBURY AREA	Blossom			1966				247
	Saulsbury	2,935	1951	1990 TA	27	-		412,264
	Nacatoch							77,713
EL DORADO SOUTH Union	Nacatoch	2,200	1920		32	10,332		56,497,136
	Tokio	2,875	1957		32	-		46,660
	Cotton Valley	7,719	1980	1986 TA	40			2,243
	Smackover				34			138,240
ELLIOTT	Nacatoch	1,937	1974			2,086		80,896
Ouachita								
ELLIOTT SOUTH	Nacatoch	1,858	1982		16	-		11,577
Ouachita								
ENYART LAKE	Mitchell	5,874	1971		38			185,365
Lafayette								
EVANS	Smackover	7,565	1981	1987	35			4,874
Columbia								
FALCON	Nacatoch	1,180	1938		14	3,919		1,070,672
Nevada & Lafayette	Blossom	2,360	1954		16-26	253		265,893
	Tokio	2,100	1947		15-28	3,431		2,163,009
	Tuscaloosa	2,300	1966	1971	17			6,658
	Hill	2,384	1983	1989 TA	17			2,156
	Travis Peak	3,362	1983		28			26,590
FELSENTHAL	Cotton Valley		1948	1954				7,322
Union								
FIELD BAYOU	Cotton Valley	7,724	1966	1968	36			3,807
Lafayette	Smackover	9,386	1959	1988	43			21,129
FISH LAKE	Rodessa	5,330	1982	1984	33			2,399
Miller								
FORKY DEER	Travis Peak			1982				184
Miller								
FORT LYNN	Tokio	3,253	1967		37	865		318,782
Miller	Rodessa	5,990	1947		38-52			
	Kilpatrick					38		25,661
	Hill					281		22,961
	Gloyd			1986 TA				41,114
	Dees Lime							10,282
	Young							58,378
	Pettet	6,700	1983		37			4,933
	Cotton Valley	8,759	1981	1982				962
FORT LYNN EAST	Hill	6,037	1984		38			23,725
Miller								
FOUKE	Cotton Valley		1992					1,190
Miller	Buckrange	2,809	1963					108,330
	Beauford					1,854		174,389
	Tokio	2,920	1952		22	11,671		1,658,680
	Tokio, First					1,974		21,107
	Tuscaloosa	3,385	1953		34	3,611		222,754
	Sturgis					4,227		13,320
	Sturgis, First		1940		24-43	1,318		17,951
	1st Sturgis-C							
	1st Sturgis SUSW							
	1st Sturgis Sand							1,727
	PSU Sturgis C Unit					8,984		113,588

See last page for key to Abbreviations.						PRODUCTION		
FIELD/ COUNTY	FORMATION	DEPTH (Ft.)	YEAR OF DISCOVERY	YEAR ABANDONED	API GRAVITY	2012	2012	CUMMULATIVE OIL (Bbls.)
						ANNUAL OIL (Bbls.)	ANNUAL GAS (MCF)	
	PSU Nesbett A Unit					-		1,380
	Sturgis, Second					4,184		29,214
	Sturgis, Third					10,743		73,140
	Sturgis, Fourth					28,486		205,506
	Paluxy	3,400	1940			93,024	298	30,070,426
	Mooringsport		1947					411,505
	Kilpatrick	4,550	1940	1969				1,003
	Kilpatrick				37			7,829
	Pettet	5,712	1984	1987 TA	38			4,386
	Travis Peak	6,340	1980	1981	48			1,846
	Smackover	8,977	1955		64	12,898	563,851	2,282,900
FOUKE NORTH	Tokio	3,120	1953		16			23,044
Miller	Tuscaloosa	3,350	1951		20-36	7,390		4,035,856
	Paluxy	3,550	1951		17-33	39		1,593,004
	Smackover	8,490	1981	1989 TA	64			30,663
FOUKE WEST	Tuscaloosa	3,580	1953		32-35			162,290
Miller	Paluxy	4,180	1952		23-38	5,605		2,013,040
	Paluxy	4,435	1974		36			
	Paluxy	4,492	1976		38			
	Paluxy	4,661	1972		50			
	Mooringsport	4,620	1967		40			78,134
	Smackover	9,456	1994		57	621	32,938	172,397
FOUR MILE CREEK	Smackover	8,058	1972		40			228,796
Miller								
FOUR MILE CREEK SO.	Smackover	8,230	1987		44			91,760
Miller								
FROG LEVEL	Smackover	8,189	1981	1986	34			61,722
Columbia								
GALILEE CHURCH	Smackover	7,522	1975	1995	29			67,968
Lafayette								
GARLAND CITY	Buckrange	2,410	1959	1969	18			124,997
Miller	Tuscaloosa	2,980	1960	1964	19			11,052
	Paluxy	3,805	1951	1962 TA	13-18			186,986
	Paluxy	2,925	1932		31	1,350		2,684,506
GARNER CREEK	Cotton Valley	6,936	1979	1990 TA	44			49,657
Union								
GENOA	Tokio	2,980	1957	1975 TA	28			4,273
Miller	Paluxy	3,350	1957		39	6,671		1,645,718
	Smackover	7,925	1977	1981	51			55,117
GOLD POINT CHURCH	Smackover	5,760	1987	1995	62			24,268
Miller								
GOODMAN CREEK	Cotton Valley					2,507		2,507
Union								
GRAVES CREEK	Hill	3,102	1991	1993	39			14,342
Union								
GRAYSON	Smackover	8,008	1993		38	280,290	414,753	15,726,091
Columbia								
GREEN GROVE	Graves	2,807	1984	1993	22			18,025
Union	Travis Peak	3,202	1984	1993	21			
GREERS CHURCH	Pettet	4,280	1979		38	3,631	52	120,022
Columbia								
GREGORY	Cotton Valley	7,966	1978		41	4,244	222	243,525
Union	Jones	9,208	1981	1984	42			3,657
GUM CREEK	Nacatoch	1,590	1941		17	5,335	131	1,429,217
Ouachita	Blossom	2,255	1945		20			11,963
	Tokio	2,470	1945		17	8,712	194	462,403
	Hogg	2,766	1965	1966	22			3,018
	Travis Peak	3,375	1964		38	5,389	129	680,972
	Cotton Valley	4,385	1964		45			258,422
	Smackover	5,866	1965		23	7,920	162	429,132
	Pettet	3,500	2011		25	2,330	55	3,754
HAMPTON	Nacatoch	2,286	1954	1958	16			164
Calhoun	Meakin	2,480	1943		14	1,950		34,028

See last page for key to Abbreviations.						PRODUCTION		
FIELD/ COUNTY	FORMATION	DEPTH (Ft.)	YEAR OF DISCOVERY	YEAR ABANDONED	API GRAVITY	2012	2012	CUMMULATIVE OIL (Bbls.)
						ANNUAL OIL (Bbls.)	ANNUAL GAS (MCF)	
HARMONY Columbia	Smackover	9,747	1975	1976	42			2,939
HARMONY GROVE Miller	Smackover	7,832	1980	1993	47			166,621
HARPER CREEK Columbia	Cotton Valley Smackover	5,800 7,563	1985 1985	1988 1988	41 41			13,021 5,624
HAWKINS CREEK Columbia	Smackover	7,091	1979	1982				4,809
HAYNESVILLE Columbia	Pettet Cotton Valley	5,470 8,850	1942 1972		39 40	3,810		6,799,512 80,853
Columbia & Claiborne Par.	Smackover	10,383	1959		47	15	15,530	32,277
HAYNESVILLE NORTH	Pettet Cotton Valley Smackover	5,574 8,724 10,500	1961 1981 1980		39 47 52	3,580		136,873 93,845 54,776
HENDERSON CREEK Columbia	Travis Peak	4,233	1976		43	900		231,754
HERVEY Miller	Rodessa	3,610	1955	1985	37			15,106
HIBANK Union	Nacatoch Meakin Graves Tokio Tuscaloosa Glen Rose Rodessa Hogg Pettet Travis Peak Cotton Valley	2,080 2,440 2,555 3,126 3,020 - 3,300 3,145 - 4,006 -	1942 1952 1952 1986 1953 1955 1977 1963 1961 1963 1959		40 31 32 41 49 - 48 - 45 36	9,669		2,975,797 2,746,817 733,647 8,134 987,823 2,403 35,699 56,230 108,419 504,873 7,418
HIBANK SOUTH Union	Hogg Travis Peak Cotton Valley	- 3,480 6,396	1954 1952 1986	1960 1964 1986				57,595 615,004 415
HIBANK CREEK Union	Tuscaloosa	3,065	1959		29	1,401		296,081
HILLSBORO Union	Nacatoch Primm Meakin Tuscaloosa Travis Peak	2,230 2,554 2,560 3,050 3,390	1930 1984 1959 1984 1981		23 - 22 - 36	15,181		2,322,043 - 435 301,312 368,513
HILLSBORO SOUTH Union	Rodessa Hogg Travis Peak	3,545 4,510 -	1965 1966 -	1983 TA 1985 TA 1968	45 44 -	-		130,448 176,479 1,173
HOGG Union	Cotton Valley Smackover	5,575 6,980	1979 1984		35 42	78		141,296 3,547
HOLLY SPRINGS CH. Miller	Tuscaloosa	3,476	1980	1988	36			19,792
HOLMES CREEK Union	Blossom Tokio	2,600 2,745	1952 1967		24 28	1,535 566		601,468 54,085
HOOVER BRANCH Miller	Smackover	8,144	1974	1984	46			48,737
HORSEHEAD Columbia	Pettet Smackover	5,850 10,630	1952 1989		36 46	-		4,630,763 507
HORSEHEAD CREEK Columbia	Smackover	9,798	1985	1990	35			35,929
IRMA Nevada	Nacatoch Tokio Paluxy Glen Rose Travis Peak Cotton Valley Smackover Rodessa	1,150 2,586 2,668 - 3,015 - 4,712 2,372	1920 1963 1963 1953 1953 1955 1972 1993		14 30 32 - 30 - 28 26	44,215 5,240 -		13,003,483 3,619,467 276,325 43,038 666,199 3,375 2,622,147 6,637
IRONS	Tokio	2,300	1980		22	-		13,767

See last page for key to Abbreviations.						PRODUCTION		
FIELD/ COUNTY	FORMATION	DEPTH (Ft.)	YEAR OF DISCOVERY	YEAR ABANDONED	API GRAVITY	2012	2012	CUMMULATIVE OIL (Bbls.)
						ANNUAL OIL (Bbls.)	ANNUAL GAS (MCF)	
LOUTRE CREEK	Cotton Valley			1982				3,024
Union	Smackover			1954				105,572
LOWERY BRANCH	Smackover	8,935	2001			6,300		76,602
Union								
MAGNOLIA	Rodessa	3,220		1958				5,326
Columbia	Pettet	4,222	1988		43	21,883	460	59,253
	Travis Peak	4,870	1979	1989	44			56,895
	Cotton Valley	6,390	1943		47	2,942	1,642	1,695,191
	Smackover	7,500	1938		38	192,993	267,735	170,541,347
MANDEVILLE	Smackover	6,208	1975		33	844		148,243
Miller								
MARS HILL	Cotton Valley			1969				2,509
Lafayette	Smackover	9,012	1985	1992	61			95,045
MARYSVILLE	Cotton Valley	6,023	1970	1973	42			3,138
Union	Smackover					1,090		155,967
MAYTON	Tuscaloosa	2,940	1967		27			52,767
Miller	Paluxy	3,620	1967		16	3,430		515,882
	Mooringsport	3,952	1976	1987	31			30,317
MCDONALD	Sligo	2,821	1929	1932	31			117,085
Ouachita								
MCKAMIE NORTHEAST	Smackover	8,230	1982	1990	66			64,334
Lafayette								
MCKAMIE PATTON	Gloyd	4,755	1973		31	14,356		927,238
Lafayette	James	5,014	1971		38	15,162		2,411,395
	Cotton Valley	7,306	1970		45	118,559		3,842,008
	A Lime							37,749
	Smackover	9,100	1940		55	14,348	235,588	32,856,885
	Paluxy							3,916
	Travis Peak	8,310	1998			900		3,964
MCKAMIE SOUTH	Smackover	9,340	1986	1989	55			3,107
Lafayette								
MCKINNEY BAYOU	Tokio	2,810	1975	1982	32			6,194
Miller	Tuscaloosa	3,050	1955	1989 TA	20			54,331
	Paluxy	3,398	1955		31	4,593		1,898,871
	Glen Rose	3,930	1955	1990 TA	39	2,512		58,458
	Mooringsport	3,957	1985	1986 TA	25			2,565
MCLENDON BRANCH	Smackover		1991		42	-		506,365
Columbia	Buckner		1992					10,079
	Pettet	4,814	1993					9,751
MCNATT	James	2,666	1976	1992	20			2,429
Nevada								
MCNEIL EAST	Pettet	3,490	1946		29	291		874,614
Columbia	Travis Peak	4,040	1977		48	1,126		163,067
	Tokio							1,957
MEDLOCK	Smackover			1965				535
Columbia								
MERIWETHER LAKE	Tuscaloosa	2,700		1993	20			26,554
Lafayette	Mooringsport	3,418	1983		18			6,323
	Smackover	7,082	1982		23	1,661	37	206,831
	Tokio	2,275	1995		17	2,361	56	46,591
MERIWETHER LAKE S.	Paluxy	2,816	1981		14	-		26,009
Lafayette								
MERIWETHER LAKE SE	Smackover	7,282	2007			-		2,729
Lafayette								
MIDWAY	Tokio	2,106	1973		12			35,416
Lafayette	Tuscaloosa	2,390	1973	1980 TA	12			2,278
	Rodessa	3,526	1969	1970	29			685
	Smackover	6,400	1942		36	85,623	102,727	83,764,355
MIDWAY EAST	Tokio	2,185	1958		18			312,994
Lafayette	Tuscaloosa	2,475	1970		32			451,672

See last page for key to Abbreviations.						PRODUCTION		
FIELD/ COUNTY	FORMATION	DEPTH (Ft.)	YEAR OF DISCOVERY	YEAR ABANDONED	API GRAVITY	2012	2012	CUMMULATIVE OIL (Bbls.)
						ANNUAL OIL (Bbls.)	ANNUAL GAS (MCF)	
NORPHLET Union	Cotton Valley			1959				1,632
O'BRIEN Union	Pettet	3,987	1972	1996	36			55,368
OGEMAW Ouachita	Blossom	2,050	1967	1968	30			630
OLD UNION Union	Blossom	2,730	1961	1985 TA	23			63,870
OLIN FOREST Union	Tuscaloosa	3,200	1956	1970	47			390,250
	Rodessa	4,300	1964	1984 TA	44			15,020
	Hogg Sand	4,400	1960		72	373		722,142
	Travis Peak	4,519	1969	1970	50			3,859
OLIN FOREST NORTH Union	Rodessa	3,155	1966		43			226,896
	James Lime	3,328	1966		42			421,279
	Hogg	3,573	1966		41	4,004		586,726
	Travis Peak	3,943	1966	1989 TA	43	3,354		240,981
	Cotton Valley	4,807	1966	1970 TA	18			42,009
	Cotton Valley	5,011	1988	1988	38			1,368
PACE CITY Ouachita	Meakin	2,190	1947		27	1,774		487,654
	Graves	2,350	1967	1986	18	173		6,245
	Blossom	2,470	1967		23	698		119,557
	Tokio	2,565	1978		29	355		44,143
	Glen Rose	3,105	1947		31	3,257		1,272,652
	Rodessa	2,740		1965	29			44,182
	Hogg Sand	3,055	1957		30	522		132,969
	Travis Peak	3,200	1951		27	19,189	382	847,040
	Cotton Valley	4,236	1985		40	746	118	56,607
	Smackover	5,622	1976		25	20,862	352	595,128
PACE CITY EAST Ouachita	Nacatoch			1964 TA				
	Meakin	2,290	1953		27	1,359		709,973
	Graves	2,400	1952		21	1,354		849,715
	Rodessa	2,953	1972		30	-		57,509
	Pettet	2,820	1965	1989 TA	26	-		15,243
	Travis Peak	2,817	1954	1973	18			19,087
	Smackover	5,645	1969	1976	27	10,047		91,337
PACE CITY WEST Ouachita	Smackover	5,816	2007			5,338		36,037
PALM Lafayette	Smackover	6,556	1963		35			119,464
PALM WEST Lafayette	Paluxy	3,187	1984		23	3,052		151,066
PATMOS Hempstead	Tuscaloosa	2,220	1970	1971	18			507
	Smackover	5,860	1966	1971	28			22,595
PATMOS NORTH Hempstead	Tokio	1,884	1982		19	2,484		174,556
PAUP SPUR Miller	Pettet	4,084	1978	1990	30			71,842
	Travis Peak	4,260	1985	1990	16			2,524
	Smackover	6,150	1975		43	20,356		1,697,697
PIGEON HILL Bradley & Union	Travis Peak	2,923	1955	1985 TA	18			4,471
	Cotton Valley	4,287	1955		15			251,510
PILL BRANCH Miller	Jeter	6,115	1987		41			55,498
	Rodessa							412
PINE LOG CREEK Ouachita	Smackover	5,505	2007			3,424		35,485
PINE TREE Columbia	Cotton Valley	6,863	1969	1985				2,093
	Smackover	8,425	1949		44	4,358	301	1,541,684
	Travis Peak	4,672	1993	1995				0
PISGAH Columbia	Pettet	5,500	1977		38	6,386		179,927
	Cotton Valley	10,532	1982	1991 TA	48			53,809
PLAINFIELD Columbia	Pettet	5,839	1965		34	1,192		140,271
	Cotton Valley	9,184	1957		44	876		1,522,522
	Rodessa	4,990	1989		43			37,223

See last page for key to Abbreviations.						PRODUCTION		
FIELD/ COUNTY	FORMATION	DEPTH (Ft.)	YEAR OF DISCOVERY	YEAR ABANDONED	API GRAVITY	2012	2012	CUMMULATIVE OIL (Bbls.)
						ANNUAL OIL (Bbls.)	ANNUAL GAS (MCF)	
PLEASANT GROVE Union	Travis Peak	3,581	1967	1977 TA	42			54,334
PLEASANT HILL Miller	Cotton Valley Smackover	8,327	1974	1979	63			7,117 45,199
PLEASANT VALLEY Lafayette	Cotton Valley	9,068	1980	1981	38			1,846
PLEASANT VALLEY SO. Lafayette	Rodessa		1990		42	1,674		300,988
POISON SPRINGS Ouachita	Meakin			1963				129
PROMISED LAND CHURCH Miller	Hill	5,968	1985	1985	40			200
PRUDHOE BAY SOUTH Lafayette	Tokio Paluxy	2,688 3,681	1988 1990		17 22			14,062 3,088
RAINBOW SOUTH Union	Nacatoch Tuscaloosa	2,208 3,078	1986 1982	1989 TA	21 40	259		397 357,927
	Rodessa		1982	1982				2,304
	Travis Peak	3,315	1980	1986 TA	32	-		15,181
	Cotton Valley	4,653	1967	1985	34			7,379
	Pettet							786
RAMSEY CREEK Union	Tokio Sligo	2,978	1983	2008 PA	19			1,590 6,291
RAWLS CREEK Lafayette	Ford	8,316	1976	1989 TA	54			56,132
RED ROCK Columbia	Pettet	5,633	1975	1997	40			657,837
RICHLAND CREEK Union	Tokio	2,768	1971	1980 TA	32			21,386
RILEY BRANCH Columbia	Cotton Valley	6,877	1977	1980	41			4,177
RITCHIE Union	Baker	2,606	1963		16	1,632		1,229,501
RIVER BEND Union	Blossom	2,731	1959	1963	16			338
ROCKY MOUND Columbia	Gloyd	5,600	1962	1965	33			19,388
ROCKY MOUND SOUTH Miller	Hill Lower Hill	5,558 5,622	1981 1983	1992	70 38			45,893
RODESSA Miller	Rodessa Jeter	6,050 5,900	1937 1964		42 65	6,193		9,299,169 89,621
	Hill	6,025	1983		28	315		38,536
	Gloyd	6,122	1983		45	14,028		769,279
	Pettet	6,784	1990		44	4,118		120,801
RODESSA NORTH Miller	Wisinger		1943	1963				101,912
RODESSA WEST Miller	Hill Jeter	5,965 6,000	1959 1980	1996 1988	40 46			258,949 36,611
	Mitchell	6,090	1960		41			67,509
RONDO Miller	Smackover	6,517	1982	1984				2,488
SALEM CHURCH Union	Travis Peak Cotton Valley	4,296 5,328	1964 1967	1971	42 35	2,175		179,351 3,139
	Smackover	6,945	1984	1975	69			278,329
SALEM GRACE CHURCH Lafayette	Cotton Valley	8,740	1990		44			24,392
SAMS Miller	Smackover	8,100	2011			883	51,933	1,919
SANDY BEND Union	Nacatoch Blossom	2,270 2,762	1947 1956	1983	19 25	39,410		13,542,557 35,792
	Travis Peak	3,357	1984		25	255		15,433
SAUL'S CHAPEL Union	Tuscaloosa Travis Peak	3,180 3,880	1964 1964	1990 1985	45 43			431,444 76,418

See last page for key to Abbreviations.						PRODUCTION		
FIELD/ COUNTY	FORMATION	DEPTH (Ft.)	YEAR OF DISCOVERY	YEAR ABANDONED	API GRAVITY	2012	2012	CUMMULATIVE OIL (Bbls.)
						ANNUAL OIL (Bbls.)	ANNUAL GAS (MCF)	
SEMINARY CHURCH	Buckrange	2,269	1972	1985 TA	29			4,307
Ouachita	Blossom	2,427	1971		30			43,327
	Tokio	2,540	1971		18	185		126,113
SHEPHERD	Nacatoch			1957				1,308
Union	Travis Peak	3,140		1967	38			47,478
SHEPPARD BRANCH	Hill	3,222	1995		44			33,713
Union	Rodessa					879		29,449
SHILOH	Tokio	2,700	1964		14	4,149		591,252
Lafayette	Tuscaloosa	2,975	1966		19	747		117,163
	Paluxy	3,025	1966		23	-		208,504
	Smackover					12,326	3,635	36,622
SHONGALOO NORTH	Pettet	5,750	1951	1987 TA	40			576,386
Columbia								
SHORT	Blossom	2,858	1969		20	1,556		19,036
Union								
SHULER	Graves			1951 TA				93
Union	Blossom			1971 TA				
	Tuscaloosa	3,100	1952		38	-		558,956
	Glen Rose			1971 TA				
	Hill Sand	3,160	1954		42	3,256		1,454,663
	Pettet	4,010	1950		42	58,816		3,784,825
	Travis Peak			1971 TA				
	Morgan Sand	5,500	1937		41			4,502,080
	Cotton Valley	5,580	1953		42	48,369	2,307	10,897,164
	Mayfield B Sand	5,590	1952		42	1,455		1,626,292
	Lagrone Sand	5,700	1953	1989 TA	42			1,912,483
	Jones	7,530	1937		34	76,300	28,488	83,382,110
	Reynolds			1955				7,728,942
SHULER EAST	Tuscaloosa	3,075	1977		42			45,591
Union	Pettet	3,930	1951		45	2,985		608,994
	Morgan Sand	5,580	1941		46	1,186		2,005,869
	Cotton Valley	7,130	1951		38	2,161		1,429,671
	Jones	7,530	1951		40			100,551
	Smackover	7,640	1951		46	280		210,975
SMACKOVER	Uncontrolled	1,920	1922		19	1,795,279		595,256,978
Union &	Travis Peak	3,100	1953		31	9,356		4,558,476
Ouachita	Cotton Valley	4,050	1976		38	1,230		111,342
	Smackover	5,900	1978	1986	31	5,819		38,013
	Meakin					2,311		34,801
	Nacatoch					108,744		1,776,506
BILYEU AREA	Travis Peak	2,668	1968		26			320,499
BOLLENBACKER AREA	Travis Peak	3,250	1970		34	1,584		275,085
KIRKLAND AREA	Travis Peak	3,360	1964	1965	25			4,095
LINGLE BACH AREA	Cotton Valley			1963				122
ROSENBAUM AREA	Travis Peak	3,092	1958	1965	24			43,684
SAND LAND AREA	Cotton Valley	4,050	1960	1969	39			86,912
	Travis Peak		1961	1972	36			77,039
SHULER AREA	Travis Peak	3,370	1970	1991	35			46,921
STEVENSON AREA	Travis Peak	2,930	1980		43	1,727		81,237
TURNER AREA	Travis Peak	2,926	1951		40			131,323
SMITHVILLE	Blossom	2,960	1966		36			21,309
Union								
SNOW HILL	Travis Peak	3,300	1956		31	6,002		680,543
Ouachita	Cotton Valley	3,363	1955		35	15,924		4,458,902
	Smackover	4,821	1936			10,458		888,757
	Tokio	4,896	1983			-		99
SPIRIT LAKE	Buckrange			1949				3,663
Lafayette	Tokio	2,702	1980		18	867		47,344
	Tuscaloosa	3,170	1978		33	1,435		175,898
	Goodland Lime	3,600	1949		36	632		371,877
	Paluxy	3,740	1947		34	8,318		2,787,879
	Mooringsport	3,873	1947		29	2,022		166,206
	Kilpatrick	4,100	1946	1972 TA	38			1,575,451

See last page for key to Abbreviations.						PRODUCTION		
FIELD/ COUNTY	FORMATION	DEPTH (Ft.)	YEAR OF DISCOVERY	YEAR ABANDONED	API GRAVITY	2012	2012	CUMMULATIVE OIL (Bbls.)
						ANNUAL OIL (Bbls.)	ANNUAL GAS (MCF)	
	Hill		1979		42			88,842
	Smackover	7,051	1971		54	1,561	39	271,326
	Glen Rose					1,330		23,960
SPIRIT LAKE NORTH	Tokio	2,540	1985		17	4,826		286,867
Lafayette	Tuscaloosa	3,015	1987	1987 TA	18			170
	Paluxy	3,834	1988		34			7,839
	Kilpatrick	4,468	1984		40			97,674
	Hill	4,579	1984	1984	35			1,366
SPOTSVILLE	Pettet	4,243	1986		36			39,856
Columbia	Smackover	7,736	1978	1981	54			89,647
SPRING BRANCH	Nacatoch	2,150	1984	1985	39			267
Union	Smackover	7,367	1981	1985				2,204
SPRINGHILL	Tokio	3,100	1952		41			1,562,904
Columbia	Pettet	5,840	1987	1988	41	72,095	6,725	1,011,349
	Hill			1963				19,687
	Haynesville	11,035	1987		61	19,806	1,552,627	3,247,962
	Haynesville/Smackover B					980		9,334
	Nacatoch					4,761		46,509
ST. JONAH CHURCH	Smackover	9,367	1986	1988	49			2,045
Lafayette								
ST. MARY	Hill	5,634	1979		38	2,876		469,953
Lafayette	Mitchell	5,789	1978		43			1,725,769
ST. MARY WEST	Cotton Valley	8,615	1984		45	16,099	5,810	1,049,009
Lafayette	Smackover	8,624	1985	1985 TA1982	61	-		12,604
ST. MATTHEWS	Smackover	7,763	1978	1982	38			1,753
Columbia								
STAMPS	Tokio	2,350	1955		16	9,211		2,363,371
Lafayette	Tuscaloosa	2,600	1955		20			314,044
	Paluxy	4,070	1958		38	3,610		2,040,518
	Mooringsport	3,040	1959		26			84,229
	Rodessa	3,773	1956		34	805		783,042
	Hill	3,459	1984	1985 TA	36			1,484
	Knighton			1972				10,150
	Travis Peak	4,290	1958	1976 TA	33			31,038
STAMPS EAST	Tokio	2,490	1979		19	1,811		291,435
Lafayette	Tuscaloosa			1956				5,617
STAMPS NORTHWEST	Tokio	2,295	1956		15	4,420		563,149
Lafayette								
STAMPS WEST	Tokio	2,568	1963	1986 TA	18			106,604
Lafayette	Paluxy	3,310	1976	1989 TA	17			33,605
STATELINE	Smackover	8,882	1990		44	2,253		1,575,210
Union								
STATELINE SOUTH WEST	Smackover	8,930	1995		50	7,676	45,930	667,380
Union								
STATELINE WEST	Smackover							22,737
STEPHENS	Nacatoch	1,402	1971		17	10,335		877,526
Columbia &	Buckrange	2,100	1922		30	21,290		24,172,385
Ouachita &	Tokio	2,260	1965		17	1,007		158,253
	Rodessa	2,650	1949		28	-		678,003
Nevada	Rodessa	3,277	1972		32			
	Glen Rose	2,660	1948		30	2,141		1,209,528
	James Lime	3,100	1945		31			512,201
	Hogg Sand	3,190	1949		35	9,249		6,815,141
	Pettet	3,393	1981		26	11,766		271,366
	Cotton Valley	4,910	1985		32			8,297
	Smackover	5,940	1956		34	50,818		3,717,328
CURRY AREA	Nacatoch	1,350	1966	1990 TA	17			44,380
	Buckrange	1,960	1966	1971	33			15,314
	Rodessa	2,939	1967	1969 TA	16			4,360
	Travis Peak	3,300	1949		32			764,807
SMART AREA	All Sands	3,040	1941		30	57,032		22,681,864

See last page for key to Abbreviations.						PRODUCTION		
FIELD/ COUNTY	FORMATION	DEPTH (Ft.)	YEAR OF DISCOVERY	YEAR ABANDONED	API GRAVITY	2012	2012	CUMMULATIVE OIL (Bbls.)
						ANNUAL OIL (Bbls.)	ANNUAL GAS (MCF)	
STEPHENS NORTH Nevada	Buckrange	1,990	1945		26	678		541,566
STEPHENS NORTH EXT. Ouachita	Blossom	2,140	1950		29	1,980		356,136
STOW LAKE Union	Graves Travis Peak	2,764	1969	1987 TA 1986	16	-		4,116 70
STRONG Union	Cotton Valley Smackover	5,890 6,242	1962 1980	1989 TA	36 32			122,130 83,350
STRONG NORTH Union	Nacatoch Travis Peak	2,300 3,944	1958 1985	1971 1986	21 39			
	Cotton Valley	4,864	1979		32	1,864		137,524
SULPHUR RIVER Miller	Rodessa	5,880	1993	1995	41			2,220
SUNVIEW Lafayette	Paluxy	2,790	1965	1966	21			4,600
TEXARKANA Miller	Pettet Smackover	4,926 7,358	1977 1942		36 70	10,128		515,394 408,912
TEXARKANA EAST Miller	Travis Peak	5,134	1981	1982				2,039
THREE CREEKS Union	Cotton Valley	8,054	1979	1983	42			6,711
THREE CREEKS EAST Union	Cotton Valley	6,600	1984	1991	40			9,465
TOM CREEK Union	Nacatoch Blossom			1968 TA 1970				0 2,180
	Travis Peak	3,000	1964	1965	21			3,188
TROY Nevada	Nacatoch Tokio	1,220 2,150	1936 1936		18 18	19,563		10,417,094
	Tokio 13-15-18-20					4,943		112,062
	Blossom	2,630	1956		29	956		1,014,737
	Glen Rose	2,332	1954	1986	25			66,412
	Travis Peak	2,665	1954		27	873		156,088
	Smackover	4,755	1974		32	6,317	122	1,194,556
TROY EAST Ouachita	Nacatoch	1,309	1956	1989 TA	15	1,012		106,064
TROY NORTH Nevada	Nacatoch Blossom	1,723 2,340	1956 1956	1980 TA 1997	16 24			17,775 104,171
	Tokio	2,450	1956	1981 TA	22			380,893
	Paluxy	2,830	1973		26	464		109,320
	Rodessa	2,853	1977		20	1,598		186,950
TROY SOUTH	Tokio							5,614
TUBAL Columbia & Union	Cotton Valley Smackover	8,010 9,280	1950 1950		46 51	3,447		844,556 1,759,542
TURKEY CREEK Union	Tuscaloosa	3,101	1976	1993	41			134,709
URBANA Union	Nacatoch Meakin	2,300 2,500	1930 1946		32 20	2,277		1,061,478 1,045,255
	Graves	2,604	1958	1984 TA	25	127		20,017
	Blossom	2,740	1971		32	2,086		529,366
	Tokio	2,840	1953		25	-		27,738
	Rodessa		1971	1971 TA				12
	Hogg	3,945	1971	1971	36			1,119
	Thompson			1958		344		14,791
	Crain	3,000	1940		26	1,026		2,542,449
	Gregory	3,200				2,730		9,842,415
	Upper Parker	3,350	1951		31	13,216		548,874
	Lower Parker	3,550	1959		24	3,308		145,055
	Urbana	3,526	1929		23	10,394		993,103
	Sand Unit (3500)							22,350
	Travis Peak	3,500	1951		27	13,651		3,580,183

See last page for key to Abbreviations.						PRODUCTION		
FIELD/ COUNTY	FORMATION	DEPTH (Ft.)	YEAR OF DISCOVERY	YEAR ABANDONED	API GRAVITY	2012 ANNUAL OIL (Bbls.)	2012 ANNUAL GAS (MCF)	CUMMULATIVE OIL (Bbls.)
VILLAGE	James			1978 TA				17
Columbia	Pettet	3,990	1949		30	17,188		370,166
	Travis Peak	4,550	1946		47	32,928		14,262,886
	Cotton Valley	5,570	1946		54	17,438		2,441,230
	Smackover	7,320	1938		47	4,654		12,751,585
WALDO	Smackover	7,119	1989		39	2,873	62	163,323
Columbia	Pettet					11,068	244	112,371
WALKER CREEK	Cotton Valley			1972				655
Columbia & Lafayette	Smackover	10,870	1968		48	24,929	186,040	35,896,324
WALNUT HILL	Mitchell	5,830	1957		41	35,133	9,876	2,862,083
Lafayette	Pettet			1951				2,374
	Smackover			1954				208,343
WARE CREEK	Smackover	10,404	1979		55	3,712		492,936
Columbia								
WARNOCK SPRINGS	Smackover	7,432	1982	1989 TA	70	1,128		149,675
Columbia								
WELCOME	Smackover	11,170	1969		45	-		1,639,631
Columbia	Cotton Valley	8,802	1990		42			8,490
WESGUM	Nacatoch	1,637	1978		15			2,638
Ouachita	Tokio			1997				91,980
	Travis Peak							1,436
	Rodessa	2,748	1986		42	-		63,196
	Sligo							1,099
	Smackover	5,808	1971		22	6,228	314	1,260,436
WESSON	Nacatoch	1,500	1946		15	25,733		1,603,228
Ouachita	Buckrange	2,200	1947		30	115		2,797,351
	Blossom	2,200	1947		30			827,677
	Tokio	2,340	1986	1990 TA	19			331,274
	Glen Rose	2,720	1945		30	9,019	120	1,068,017
	Hill	2,590	1945		32	2,561		8,887,078
	James Lime	2,960	1945		30	-		325,676
	Hogg	3,100	1946		32	53,668	1,306	40,189,488
	Sligo	2,595	1964		23	661		191,062
	Pettet	3,326	1982		22			13,944
	Travis Peak	3,220	1946		36	136,595	2,274	6,716,586
	Smackover	5,845	1967		34	32,458		4,120,692
WESSON NORTH	Nacatoch	1,358	1952		15	-		11,426
Ouachita	Buckrange	1,950	1966		33			348,087
	Buckrange & Blossom							984
	Blossom	1,986	1966		33			
WICKHAM CREEK	Smackover	6,993	1974	1997	35	593		317,381
Union								
WICKHAM CREEK W.	Smackover	7,034	1990	1994	33			64,481
Union								
WILDCAT								
Union	Smackover					2,320	5,218	2,320
Lafayette	Tokio					583		583
WILDWOOD	Travis Peak	3,200	1986	1992	41			3,833
Union								
WILKS	Cotton Valley			1952				5,573
Union	Smackover	7,875	1977			-		30,432
WILLISVILLE	Nacatoch	1,211	1951		14	15,334		927,524
Nevada	Blossom	1,946	1955		22	1,635		259,851
WILLISVILLE S.W.	Nacatoch	1,140	1956		14	29,611		4,777,333
Nevada	Blossom	1,980	1970		18	3,428		378,965
	Tokio	2,070	1981	1989 TA	15	-		2,031
	Travis Peak	3,260	1973	1983	28			5,015
	Smackover					792		792
	Wedington/Smackover					7,525	137	7,525
WILLISVILLE WEST	Nacatoch	1,200	1957		15	5,817		595,002
Nevada	Tokio	2,135	1955		19			255,341
	Hogg	2,977	1973	1992	22			193,654
WILMINGTON	Graves	2,768	1977		17	1,375		34,690

See last page for key to Abbreviations.						PRODUCTION		
FIELD/ COUNTY	FORMATION	DEPTH (Ft.)	YEAR OF DISCOVERY	YEAR ABANDONED	API GRAVITY	2012	2012	CUMMULATIVE OIL (Bbls.)
						ANNUAL OIL (Bbls.)	ANNUAL GAS (MCF)	
Union	Travis Peak	3,438	1958	1971	18			26,142
WILMINGTON SOUTH	Graves	2,822	1984	1988				1,224
Union								
WINCHESTER	Meakin	2,635	1956		20	-		1,078,652
Union								
WOODLEY	Nacatoch	1,925	1922		20	2,682		489,626
Union								
WOODLEY WEST	Nacatoch	2,140	1951		32	21,534		3,915,113
Union								-
WYATT	Nacatoch	2,150	1978	1986	34			1,477
Union								
YOUNG	Paluxy	2,965	1958	1964	28			35,465
Nevada								
TOTAL						6,594,951	11,548,300	1,863,343,830
TOTAL UNCONTROLLED						1,998,841		
TOTAL CONTROLLED						4,596,110		
GRAND TOTAL						6,594,951		
ABBREVIATIONS:								
A	Anticline		LF	Lense Faulted		PL	Porous Limestone	
AF	Anticlinal Faulted		LS	Limey Sandstone		S	Sandstone	
AL	Anticlinal Lense		MF	Monocline Faulted		SL	Sandy Limestone	
ALF	Anticlinal Lense Faulted		MLF	Monoclinial Lense Faulted		ML	Monoclinial Lense	
—	Estimated		OL	Oolitic Limestone				
L	Limestone		Por	Porosity Pinchout				

North Arkansas Production Data

NORTH ARKANSAS RESERVOIR DATA

FIELD	COUNTY	FORMATION	YEAR OF DISCOVERY	YEAR ABANDONED	2011 ANNUAL GAS MCF	CUMMULATIVE MCF	2012 ANNUAL GAS MCF	CUMMULATIVE MCF
AETNA	Logan	Atoka	1956		7,309,717	715,130,559	6,316,659	721,447,218
	Franklin	Morrow				0		0
		Penters				0		0
ALMA	Crawford	Atoka	1916		304,036	4,756,582	265,579	5,022,161
		Atoka	1961			37,398,774		37,398,774
		Morrow	1967			0		0
		Uncontrolled				2,337		2,337
ALMA, NORTH	Crawford	Hale	1985		10,067	602,296	10,200	612,496
		Boone	1985			0		0
ALTUS	Franklin	Atoka	1960		811,708	98,038,743	805,028	98,843,771
		Morrow				0		0
		Pitkin				0		0
B-43	Arkansas, Cleburne, Conway, Cross, Faulkner, Independence, Jackson, Lee, Lonoke, Monroe, Phillips, Prairie, St. Francis, Van Buren, White	Fayetteville, Moorefield, Chattanooga			944,039,981	2,617,437,384	1,030,845,541	3,648,282,925
	Woodruff					0		0
B-44 Area	Crawford, Franklin, Johnson, Pope							
	Logan, Sebastian, Yale, Franklin, Scott				73,624,874	348,787,966	64,339,527	413,127,493
BALDWIN	Washington	Sylamore	1985		0	1,601,629	0	1,601,629
BARNEY	Faulkner	Hale	1990	1991	0	87,887	0	87,887
BATES	Scott	Atoka	1982	1986	0	0	0	0
BATSON	Johnson	Atoka	1973		470,656	127,390,355	451,433	127,841,788
		Morrow	1973			0		0
		U/Boone	1974			0		0
BEVERLY	Sebastian	Atoka	1937		0	4,405,109	0	4,405,109
	Franklin					0		0
		Uncontrolled			3,170	115,611	1,759	117,370
BLAIR CREEK	Washington	Sylamore	1986		0	302,901	0	302,901
BLAIR CREEK SOUTH	Washington	Boone	1987		0	1,514,755	0	1,514,755
BLICK	Conway	Atoka	1967	1992	0	23,647	0	23,647
BLOOMER	Sebastian	Atoka	1945	1971	0	158,116	0	158,116
BONANZA	Sebastian	Atoka	1962		1,051,247	232,591,215	990,923	233,582,138
		Morrow	1962			0		0
		Hunton	1962			0		0
		Penters				0		0
		Pitkin				0		0
BOOGER HOLLOW	Pope	Atoka	1962	1969	0	46,516	0	46,516
BOONEVILLE	Sebastian	Atoka	1958		55,885	204,860,829	39,447	204,900,276
	Logan					0		0
BRENTWOOD	Washington	Wedington	1977		0	1,833,123	0	1,833,123
BROCK CREEK	Logan	Atoka	1992		79,306	1,827,376	75,881	1,903,257
BROCK CREEK (BELL)	Logan	Bell	1991		1,472	210,731	677	211,408
CANNON CREEK	Madison	Sylamore	1986		0	0	0	0
CAULKSVILLE	Logan	Atoka	1964		927,837	71,075,973	886,744	71,962,717

NORTH ARKANSAS RESERVOIR DATA								
FIELD	COUNTY	FORMATION	YEAR OF DISCOVERY	YEAR ABANDONED	2011 ANNUAL GAS MCF	CUMMULATIVE MCF	2012 ANNUAL GAS MCF	CUMMULATIVE MCF
		Morrow	1967			0		0
CECIL	Franklin	Atoka	1950		9,215,287	879,931,456	7,637,183	887,568,639
	Sebastian	Morrow				0		0
	Crawford	Viola	1967			0		0
		Pitkin				0		0
CENTER RIDGE	Conway	All to base of Boone				23,302		23,302
CHAFFEE ARKOMA UNIT	Franklin	Atoka			216,651	1,148,863	210,272	1,359,135
	Sebastian					0		0
CHAMBERS	Sebastian	Hartshorne Coal			140,070	3,135,531	152,777	3,288,308
CHARLESTON	Franklin	Atoka	1964	1974		38,471		38,471
CHISMVILLE	Logan	Atoka	1959		0	123,572,752	0	123,572,752
CLARKSVILLE	Johnson	Atoka	1921		695,021	89,854,571	713,160	90,567,731
		Atoka	1967			62,115,125		62,115,125
		Morrow	1965			0		0
		Uncontrolled			53,248	1,841,437	46,077	1,887,514
CLAY	White	Arbuckle	1995		0	56,420	0	56,420
CLINTON N. E.	Van Buren	Hale	1997		0	58,789	0	58,789
CNR HARTFORD	Sebastian	Hartshorne Coal			821,743	8,165,878	741,009	8,906,887
COAL HILL	Johnson	Atoka	1958		258,837	38,458,011	227,881	38,685,892
		Morrow				0		0
CYPRESS VALLEY	Conway	Morrow	1985	1987		0		0
DELAWARE	Logan	Atoka	1970		429,111	16,316,138	363,944	16,680,082
DEAN SPRINGS	Conway	Boone	1976			0		0
		Hunton				0		0
DOVER	Pope	Atoka	1959		831,686	112,668,704	528,556	113,197,260
		Morrow				0		0
		Pitkin				0		0
		Batesville				0		0
		Boone				0		0
		Penters				0		0
		Hunton				0		0
		Pre-Penn				0		0
DRIPPING SPRINGS	Crawford	Atoka	1984		0	3,187,872	0	3,187,872
		Morrow	1982			0		0
		Boone	1982			0		0
DYER	Franklin	Atoka	1964		1,121,735	79,394,157	973,421	80,367,578
		Morrow	1965			0		0
EWING	Sebastian	Atoka	1936		2,213,615	54,167,168	1,952,099	56,119,267
		Atoka	1964			105,597,719		105,597,719
		Morrow	1964			0		0
		Penters	1966			0		0
		Hunton				0		0
		Uncontrolled			445,245	9,363,812	429,144	9,792,956
EXCELSIOR	Sebastian	Atoka	1970		0	16,975,386	0	16,975,386
FERN SPRINGS	Franklin	Wedington	1981		0	5,782	0	5,782
FLETCHER CREEK	Logan	Atoka	1966		0	3,774,761	0	3,774,761
FRIENDSHIP CHURCH	Washington	Boone	1987		0	518,632	0	518,632
		Sylamore	1986			0		0
FROG BAYOU	Crawford	Dunn C	1992		0	334,575	0	334,575
FURGERSON	Pope	Atoka	1965		380,190	59,457,463	322,828	59,780,291
		Morrow				0		0
		Brentwood				0		0
GOOSE CREEK	Washington	Sylamore	1985		0	240,888	0	240,888

NORTH ARKANSAS RESERVOIR DATA

FIELD	COUNTY	FORMATION	YEAR OF DISCOVERY	YEAR ABANDONED	2011 ANNUAL GAS MCF	CUMMULATIVE MCF	2012 ANNUAL GAS MCF	CUMMULATIVE MCF
GRAGG	Sebastian	Atoka	1955		0	262,554,828	0	262,554,828
GREENBRIER	Faulkner	Morrow	1984		0	143,125	0	143,125
GREENWOOD	Sebastian	Atoka	1969		0	10,052,366	0	10,052,366
GREENWOOD JUNCTION	Crawford	Atoka	1927		0	42,063	0	42,063
GRIFFIN MOUNTAIN	Conway	Fayetteville			0	914,695	0	914,695
		Boone				0		0
HACKETT	Sebastian	Atoka	1966	1981	0	424,262	0	424,262
HARDT	Washington	Wedington	1987		0	341,926	0	341,926
		Boone	1987			0		0
		Sylamore	1987			0		0
HARGARVILLE	Johnson	Atoka	1968	1974		798,639		798,639
HARTFORD	Sebastian	Hartshorne Coal			536,206	7,695,775	563,278	8,259,053
HAZEL VALLEY	Washington				2,439	804,541	749	805,290
HECTOR	Pope	Atoka	1984		0	1,375,003	0	1,375,003
		Morrow	1984			0		0
HICKORY CREEK	Washington	Wedington			7,550	174,356	9,069	183,425
HIGH OCEAN	Washington	Sylamore	1985		0	177,944	0	177,944
HOLLIS LAKE	Crawford	Atoka	1958		3,080,794	293,689,346	2,803,991	296,493,337
		Morrow	1960			0		0
		St. Peter	1968			0		0
HUNT	Johnson	Atoka	1968		24,608	6,960,100	22,914	6,983,014
HUNTSVILLE	Madison	Sylamore	1976		0	823,539	0	823,539
HURRICANE CREEK	Crawford	Morrow	1981		0	894,344	0	894,344
		Wedington	1981			0		0
		Boone	1981			0		0
JERUSALEM	Conway	Atoka	1956		0	15,205,415	0	15,205,415
JERUSALEM EAST	Conway		1989			102,679		102,679
JETHRO	Franklin	Atoka	1955		658,671	48,735,105	571,846	49,306,951
		Morrow				0		0
		Boone				0		0
KIBLER	Crawford	Atoka	1915		0	295,413	0	295,413
		Uncontrolled				0		0
KIBLER (DEEP)		Uncontrolled			0	14,961	0	14,961
KIBLER (SHALLOW)		Uncontrolled			20,110	689,946	18,299	708,245
KIBLER-WILLIAMS	Crawford	Atoka	1957		2,127,509	194,484,956	1,929,323	196,414,279
		Morrow	1960			0		0
		Pre-Penn	1962			0		0
		Uncontrolled			200,748	4,021,854	148,325	4,170,179
KNOXVILLE	Pope	Atoka	1958		1,382,389	94,129,908	1,137,134	95,267,042
	Johnson					0		0
LAVACA	Sebastian	Atoka	1921			2,674,564	0	2,674,564
		Uncontrolled				0	0	0
LAVACA (DEEP)		Uncontrolled			375	927,737	0	927,737
LEE CREEK	Crawford	Morrow	1985		116,826	4,716,830	200,832	4,917,662
LINVILLE	Johnson	Atoka	1974		56,408	9,171,041	51,390	9,222,431
LITTLE CREEK					0	365,862	0	365,862
		Morrow	1974			0		0
LOCKE	Crawford	Boone	1979			0		0

NORTH ARKANSAS RESERVOIR DATA

FIELD	COUNTY	FORMATION	YEAR OF DISCOVERY	YEAR ABANDONED	2011 ANNUAL GAS MCF	CUMMULATIVE MCF	2012 ANNUAL GAS MCF	CUMMULATIVE MCF
LONE ELM	Franklin	Atoka	1950		759,936	141,193,881	716,566	141,910,447
		Morrow				0		0
		Pre-Penn				0		0
LUDWIG	Johnson	Atoka	1959		721,945	52,946,443	594,706	53,541,149
		Morrow				0		0
LUTHERVILLE	Johnson	Boone	1978		0	83,871	0	83,871
MANSFIELD	Sebastian	Atoka	1901		0	55,516,723	0	55,516,723
		Atoka	1965			0		0
		Uncontrolled				5,713,728		5,713,728
MARTINVILLE	Faulkner	Atoka	1980	1985	0	24,459,826	0	24,459,826
		Morrow				37,885		37,885
MASSARD	Crawford	Atoka	1951		4,177,661	361,711,984	3,650,349	365,362,333
	Sebastian	Morrow	1957			0		0
		Penters	1963			0		0
		Hunton	1962			0		0
		Boone				0		0
		Uncontrolled			53,692	1,984,830	40,707	2,025,537
MASSARD PRAIRIE	Sebastian	Atoka	1904		0	38,991,724	0	38,991,724
MIKES CREEK	Johnson	Morrow	1985		0	0	0	0
		Boone	1985			0		0
MINERAL SPRINGS	Washington				0	0	0	0
MORELAND	Pope	Atoka	1954		532,485	103,473,816	472,125	103,945,941
		Morrow	1956			0		0
MT. NEBO	Yell	Atoka	1959	1960	0	0	0	0
NATURAL DAM	Crawford	Atoka	1978		6,916	45,484	2,946	48,430
NEW HOPE	Pope	Atoka	1961		221,335	16,628,561	186,927	16,815,488
		Morrow				0		0
NEW QUITMAN					0	283,050	0	283,050
OAK GROVE	Pope	Atoka			295,165	30,815,638	273,658	31,089,296
		Penters	1975			0		0
OLD HICKORY	Conway	Atoka	1958	1985	0	493,258	0	493,258
OZARK	Franklin	Atoka	1930		306,576	9,956,917	237,497	10,194,414
		Morrow	1961			0		0
OZARK (SHALLOW)					2,422	835,363	3,943	839,306
OZARK (DEEP)					10,873	4,756,343	2,469	4,758,812
OZARK (ANDERSON)					0	1,782,738	0	1,782,738
OZARK (NEW)					0	27,881,096	0	27,881,096
OZONE	Johnson	Atoka	1974		202,473	16,844,845	190,685	17,035,530
		Morrow				0		0
		Pitkin				0		0
		Boone	1974			0		0
PARADISE	Franklin	Morrow	1961		0	0	0	0
PARIS	Logan	Atoka	1966		454,774	34,171,059	431,961	34,603,020
		Morrow				0		0
PEARSON	Cleburne	Morrow	1981	1983	0	0	0	0
PETER PENDER	Franklin	Atoka	1962		2,116,536	160,440,234	1,859,718	162,299,952
		Morrow	1959			0		0
PINE RIDGE	Logan	Atoka	1986		27,202	889,933	21,215	911,148
PINEY CREEK					0	59,261	0	59,261
POSSOMTROT	Franklin	Atoka	1966		132,157	21,335,207	122,892	21,458,099
		Morrow	1966			0		0

NORTH ARKANSAS RESERVOIR DATA

FIELD	COUNTY	FORMATION	YEAR OF	YEAR	2011 ANNUAL	CUMMULATIVE	2012 ANNUAL	CUMMULATIVE
			DISCOVERY	ABANDONED	GAS MCF	MCF	GAS MCF	MCF
Poteau Mountain	Sebastian	Hartshorne Coal	2009		7,325	53,716	4,726	58,442
PRAIRIE VIEW	Logan	Atoka	1954		292,155	9,262,463	288,526	9,550,989
		Morrow				0		0
QUITMAN	Cleburne	Atoka	1959	1992	0	318,185	0	318,185
QUITMAN, NEW	Cleburne	Fayetteville			0	0	0	0
	Faulkner					0		0
RENA	Crawford	Hale & Boone			6,806	281,041	7,838	288,879
RICH HOLLOW	Washington	Wedington	1990		536	143,628	72	143,700
RICH MOUNTAIN					0	1,748,896	0	1,748,896
RICH MOUNTAIN WEST	Logan				0	0	0	0
ROCK CREEK	Franklin	Atoka	1959		110,010	20,086,509	99,013	20,185,522
		Morrow				0		0
		Wedington				0		0
ROSS	Johnson	Atoka	1959		634,406	154,368,200	604,216	154,972,416
	Pope	Morrow				0		0
RUDY	Crawford	Atoka	1949		38,502	5,916,810	32,592	5,949,402
		Morrow				0		0
		Boone				0		0
SCOTLAND	Van Buren	Fayetteville			0	1,273,654	0	1,273,654
SCOTTSVILLE	Pope	Atoka	1960		0	163,229	0	163,229
SCRANTON	Johnson	Atoka	1960		991,470	88,327,935	1,073,645	89,401,580
		Morrow				0		0
SECTION 10	Crawford	Atoka	1920			3,804,847		3,804,847
		Uncontrolled			53,720	709,425	48,645	758,070
SHIBLEY	Crawford	Atoka	1927			9,793,741		9,793,741
		Uncontrolled			150,374	2,826,257	160,233	2,986,490
SILEX	Pope	Atoka	1942		383,261	46,976,703	396,802	47,373,505
		Morrow				0		0
		Uncontrolled			0	170,540	0	170,540
SLAYTONVILLE	Sebastian	Atoka	1971		0	2,631,562	0	2,631,562
SMOKEY ROAD					0	142,935	0	142,935
SPADRA	Johnson	Atoka	1954		1,513,665	399,113,594	1,335,052	400,448,646
	Logan	Morrow				0		0
ST. VINCENT	Conway	Morrow	1976	1983	0	0	0	0
SUGAR GROVE	Logan	Atoka	1966	1976	0	0	0	0
Sugarloaf Mountain	Sebastian	Hartshorne Coal, Lower	2007		506,798	3,152,496	418,568	3,571,064
SUNSET	Washington	Wedington	1988		1,170	119,793	306	120,099
TATES ISLAND	Pope	Atoka	1929	1985 TA	0	8,253,135	0	8,253,135
TUCKS CHAPEL	Benton	Everton	1967	1968	0	0	0	0
UNION CITY	Johnson	Atoka	1958		763,646	130,754,638	736,354	131,490,992
		Morrow	1958			0		0
URSULA	Sebastian	Atoka	1963		300,953	20,990,017	274,038	21,264,055
		Uncontrolled			11,902	547,702	9,013	556,715
VESTA	Franklin	Atoka	1932		850,667	18,763,193	824,083	19,587,276
		Atoka	1961			23,574,350		23,574,350
		Morrow				0		0
		Uncontrolled			28,970	661,168	12,278	673,446
WATALULA	Franklin	Atoka	1953		47,839	5,058,302	42,108	5,100,410
WAVELAND	Yell	Atoka	1966		0	58,846,018	0	58,846,018
WEDINGTON	Washington	Sylamore	1983		0	849,033	0	849,033
WEST FORK	Washington	Sylamore	1953		0	1,332,832	0	1,332,832

NORTH ARKANSAS RESERVOIR DATA								
FIELD	COUNTY	FORMATION	YEAR OF DISCOVERY	YEAR ABANDONED	2011 ANNUAL GAS MCF	CUMMULATIVE MCF	2012 ANNUAL GAS MCF	CUMMULATIVE MCF
WHITE OAK	Franklin	Atoka	1943		2,687,609	292,585,388	2,365,189	294,950,577
		Morrow	1958			0		0
		Boone				0		0
		Penters				0		0
WHITE ROCK MOUNTAIN	Franklin	Morrow	1984		0	184,697	0	184,697
		Wedington				14,201		14,201
WILLIAMS	Crawford	Atoka	1918			50,914,022		50,914,022
		Uncontrolled				0		0
WILLIAMS DEEP		Uncontrolled			157,667	2,740,914	156,032	2,896,946
WILLIAMS SHALLOW					0	52,771	0	52,771
WINSLOW	Washington	Wedington	1987		7,326	2,562,270	3,150	2,565,420
WITCHERVILLE	Sebastian	Atoka	1970		0	35,013,800	0	35,013,800
WONDERVIEW	Conway	Fayetteville			0	25,872	0	25,872
WYMAN	Washington	Sylamore	1985		0	0	0	0
						0		0
TOTAL					1,073,295,953	9,622,451,380	1,144,485,742	10,766,937,122

**Arkansas Brine Production
1979 -2012**

YEAR	BARRELS
1979	113,592,673
1980	183,875,440
1981	191,624,074
1982	189,407,705
1983	201,231,245
1984	235,726,972
1985	208,648,907
1986	203,240,401
1987	205,044,975
1988	222,819,711
1989	235,804,261
1990	241,020,532
1991	235,988,715
1992	231,928,936
1993	237,747,546
1994	275,331,857
1995	311,439,117
1996	324,756,326
1997	352,622,166
1998	324,727,490
1999	301,514,302
2000	321,518,739
2001	309,000,330
2002	322,563,813
2003	301,118,442
2004	326,469,195
2005	251,628,561
2006	293,118,746
2007	285,385,870
2008	286,724,347
2009	175,031,787
2010	276,917,124
2011	289,818,680
2012	265,326,652

**Brine Production
2012**

FIELD	BARRELS
Atlanta	3,618,722
Big Creek	2,521,037
Burns Pond	11,224,704
Cairo	8,543,538
Catesville	34,969,400
Hibank	8,151,279
Hogg	2,784,220
Kerlin	7,959,317
Kilgore Lodge	41,181,538
Lisbon	9,043,893
Magnolia	16,100,686
Marysville	45,027,925
Shuler East	4,959,798
Village	34,289,716
Warnock Springs	22,415,424
Wilks	12,535,455
TOTAL	265,326,652