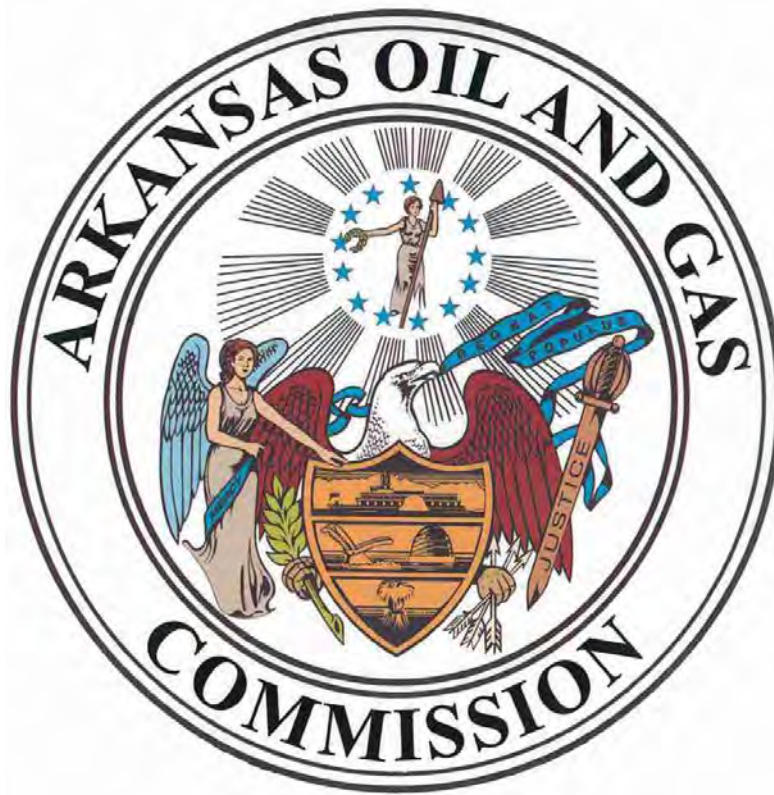


Annual Report of Production 2014



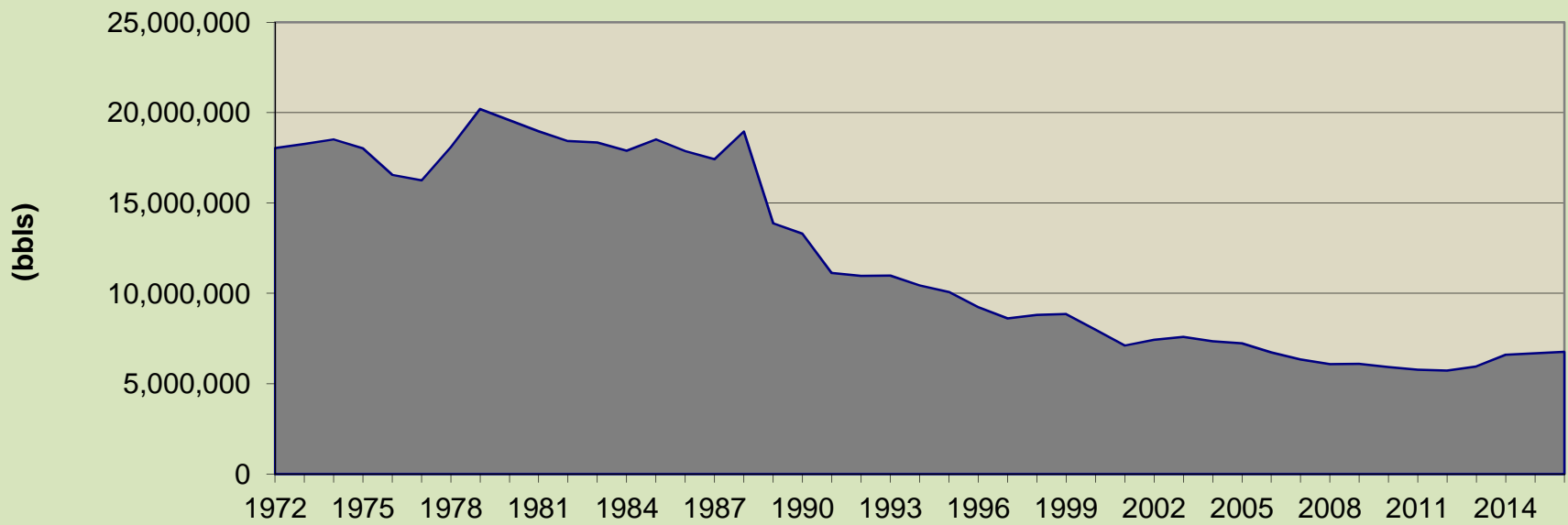
Lawrence E. Bengal
Director

Table of Contents

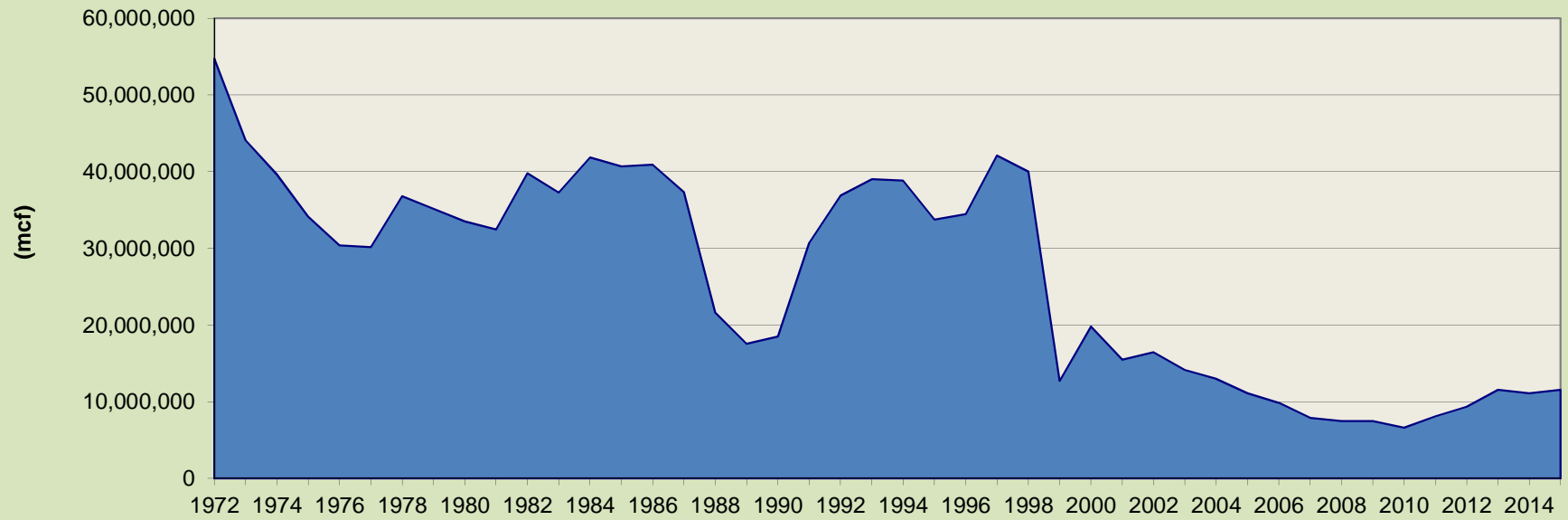
Informational Graphs	3
Report of Secondary Recovery Projects	9
South Arkansas Production Data	14
North Arkansas Production Data	33
Arkansas Brine Production	42
Brine Production 2014 By Field	43

Informational Graphs

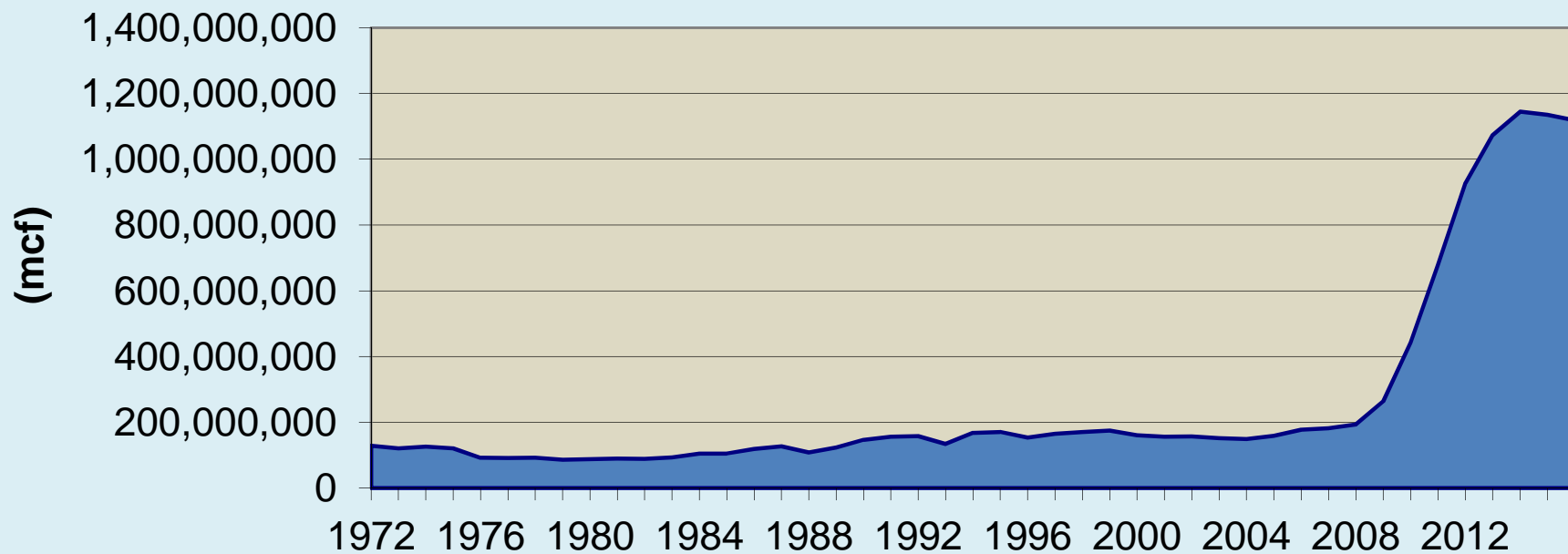
South Arkansas Oil Production



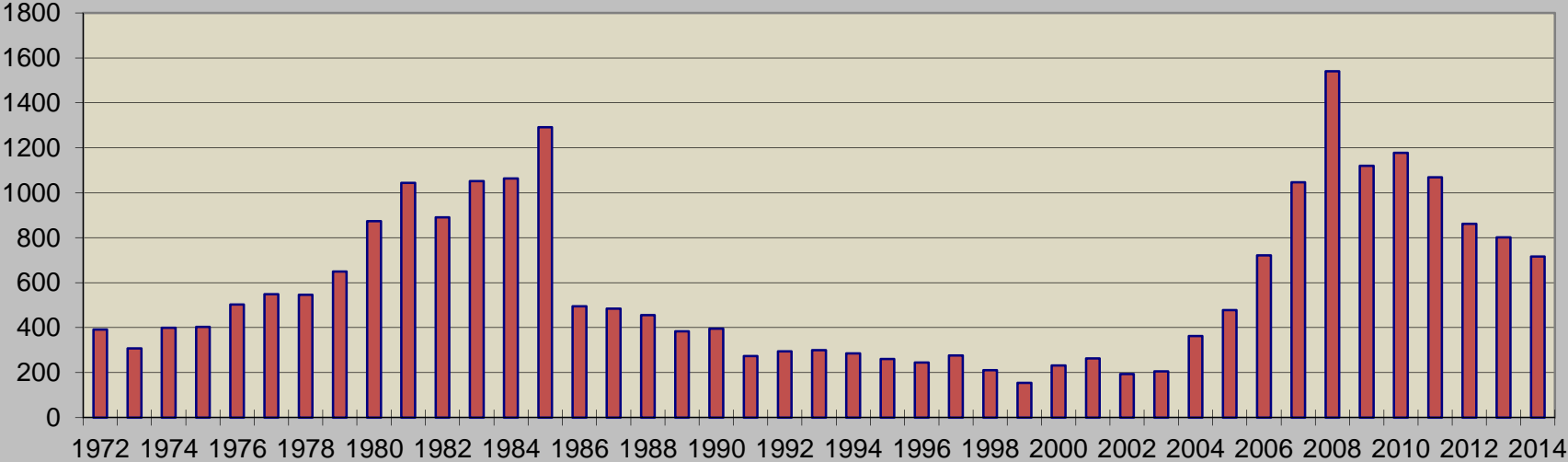
South Arkansas Gas Production



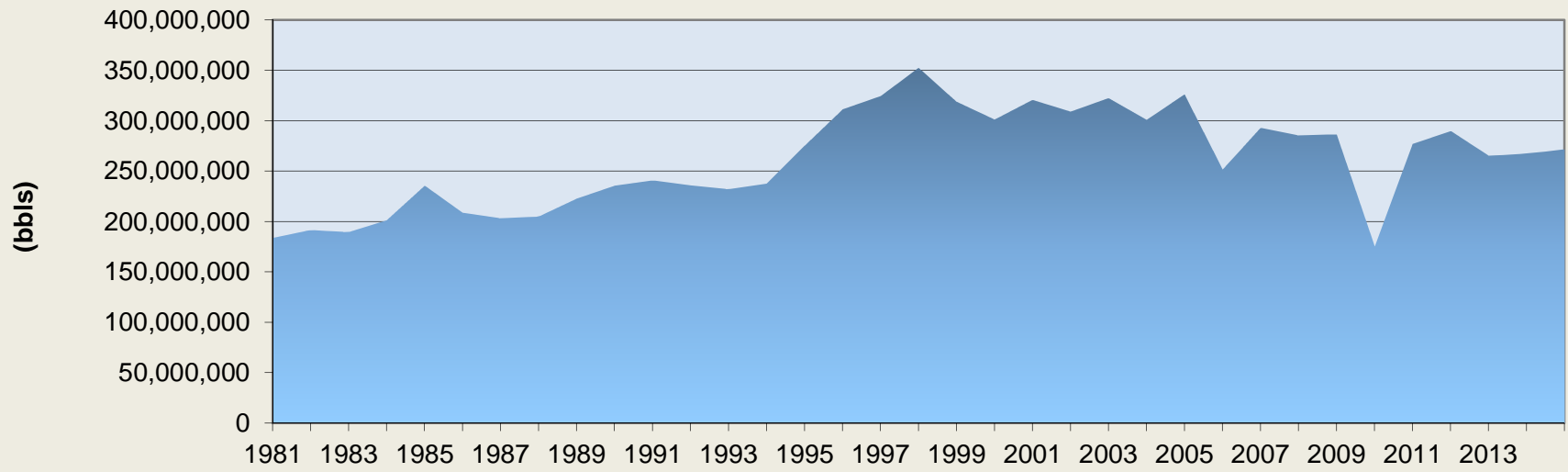
North Arkansas Gas Production



Drilling Permits Issued



Brine Production



Report of Secondary Recovery Projects

PRESSURE MAINTENANCE AND SECONDARY RECOVERY AND UNITIZED PROJECTS IN SOUTH ARKANSAS

PRODUCTION

FIELD/ RESERVOIR	COUNTY	YEAR DISCOVERED	DATE UNITIZED	ORDER NUMBER	ORDER DISSOLVING UNIT	DATE OF INJECTION	FLUID INJECTED	ACRES	PAY THICKNESS ft.	POROSITY %	PERME- ABILITY md.	CONNATE WATER %	OIL IN PLACE MBbls.	RECOVERY		ANNUAL	ANNUAL	CUMMULATIVE	CUMULATIVE	
														PRIMARY %	SECONDARY %	OIL	GAS	OIL	GAS	
																Bbls.	MCF	Bbls.	MCF	
BODCAW																				
Kilpatrick	Nevada	1950	9-1-74	40-74			Water	410	13.0	20.0	150	38	3,809	27	30	1,892			247,616	
BRADLEY WEST																				
Mitchell	Lafayette	7/1/1955	27-55	1-1997	1-1997		Gas	680.00	12	16.5	200	28	12,000						1,252,317	
BUCKNER	Columbia &																			
Smackover	Lafayette	1997	6-1-97	24-97				2160	38	23	50	17	62,000	21	13	10,831			715,413	
(Unit sized reduced)				178A-2010-02				720												
BUENA VISTA																				
Buckrange	Ouachita	1952	6-1-64	24-64	116-2003-10	6-23-64	Water	400	5.0	34.1	331	35	1,532	21	45				1,245	
BURDELL BRANCH																				
Kilpatrick Lime	Nevada	1975	5-1-77	27-77			Water	280	3.5	24	58	40	203	24	35				23,460	
CAMP CREEK																				
Blossom	Union	1959	11-7-62	45-62	192-2011-07	1-5-63	Water	440	4.0	27.0		31	2,313	25	35				72,565	61
CATESVILLE																				
Cotton Valley																				
& Jones	Union	1950	8-1-56	22-56			None	1505	5.0	27.0		50	9,719	20	25	4,539			1,560,229	231,084
Smackover	Union	1950	8-1-56	22-56			None	435	6.0	24.0		34	2,096	25	35				588,952	
CHALYBEAT SPRINGS																				
Smackover	Columbia	1972	11-24-75	57-75			Gas	6144	43.0	14.0	156	30	133,681	22	37	639	64,910		2,439,894	35,914,592
CHAMPAGNOLLE LANDING																				
Baker	Union	1958	9-1-75	45-75			Water	1120	7.0	31.0	2,661	35	7,786	23	40	12,990			1,020,665	
CHARIVARI CREEK																				
Nacatoch	Bradley	1964	5-1-84	139-84		10-1-84	Water	549	15.2	32.0	222	50	5,894	8	12	16,675			547,801	
CHRISTMAS																				
1st Sturgis	Miller	1957	2-1-67	3-67		2-1-67	Water	410	8.5	24.8	659	39	2,200	10	19				314,086	
DAYS CREEK																				
Smackover	Miller	1973	2-1-79	5-79		8-1-79	Water	720	72.0	20.0		20	15	34	44	20,614			4,316,640	2,894,715
DORCHEAT-MACEDONIA																				
Cotton Valley	Columbia	1939	4-6-43	3-43			None	1120	60.3	15.0	100	30	57,000			406,391	2,762,219		3,495,908	20,650,257
Rodessa G-3 (4530-4560)	Columbia	1955	1-1-1966	90-1965			Water	240	12	25.0	1,200	30	1,032	6.4	7.8				29,439	
Rodessa (4510-4540)	Columbia	1955	9-1-1967	52-1967			Water	880	14	22.0	220	20	3,670	14.5	11.5				127,560	
FOUKE																				
Beauford	Miller	1940	4-1-65	13-65		4-27-65	Water	520	15.0	25.6	1,194	18	4,800	22	32	2,463			1,070,972	
1st Tokio	Miller	1955	12-1-72	53-72			Water	340	10.0	34.5	244	37	2,282	26	37	3,431			228,326	
1st Sturgis-C	Miller	1940	8-1-54	27-54		9-12-54	Water	480	17.0	25.0	1000	35	35,462	40	50	-			1,643,486	
PSU STURGIS "C"				46-2002-04				600								8,416			130,820	
Nesbitt "A"	Miller	1940	1-24-62	4-62		4-18-62	Water	160	11.0	23.0	250	15	1,010	20	32	-			512,581	
1st Stur. SUSW	Miller	1941	7-22-70	34-70		9-21-70	Water	400	11.0	30.8	1,104	13	4,116	28	48	1,288			364,805	
2nd & 3rd Sturgis (Fouke D)	Miller	1940	10-1-02	101-2002-08				400	10.02	27	1,780	25	2,198	25	45	4,338			580,269	
Sturgis 3 & 3A (Fouke E)	Miller	1940	9-1-03	97-2003-08		10-16-03	Water	463.79	11.7	30	1,200	25	4,836	34	47.5	7,248			97,732	
4th Sturgis (Fouke F)	Miller	1940	9-1-03	98-2003-08				585.19	11.6	27	1,150	24	5,087	37.5	50.3	36,089			302,777	
FOUKE N.																				
Tuscaloosa	Miller	1951	7-11-63	33-63		10-2-63	Water	160	4.0	31.1	568	46	587	21	41				281,733	
GENOA																				
Young Sand	Miller		3-1-1962	6-1962			Water	1427	4.0	27	719	35	4,000	22	46				1,409,810	
Purifoy (Tokio) Sand	Miller		11-1-1963	47-1963			Water	140	5.0	20		40	40	10	20				173	
GRAYSON																				
Smackover	Columbia	1993	7-1-95	41-95		10-25-95	Gas & Water	1240	100	19.0	400	34	34,066	25	45	223,180	292,565		15,129,935	12,646,527
HAYNESVILLE																				
Pettet	Columbia	1942	5-1-44	7-44		7-1-46	Water	3426	9.4	18.0	0-50	22	26,375	28	28	-			6,056,764	
Smackover "B"	Columbia	1959	12-1-64	68-64			Gas	112	5.0	12.9	152	23	27	19	42	24	43,022		32,323	656,785
HORSEHEAD																				
Pettet	Columbia	1952	4-1-57	17-57		12-26-57	Water	2919	7.5	18.0	0-50	22	17,828	24	35	-			2,308,136	
IRMA																				
Nacatoch	Nevada	1921	6-1-67	42-67		7-21-67	Water & Steam	1840	13.0	40.0	300	33	51,500			22,727			1,534,036	
KELLY BAYOU																				
Jeter	Miller	1962	11-21-63	56-63	77A-2008-03	12-1-64	Gas & Water	4320	8.0	22.0	100	29	29,307	24	35				4,469,259	6,182,302
Jeter	Miller	1962	1-1-15	370-2014-12				4320	8.0	15.6	84	29.5	21	22.3	31.8					

PRESSURE MAINTENANCE AND SECONDARY RECOVERY AND UNITIZED PROJECTS IN SOUTH ARKANSAS

PRODUCTION

FIELD/ RESERVOIR	COUNTY	YEAR DISCOVERED	DATE UNITIZED	ORDER NUMBER	ORDER DISSOLVING UNIT	DATE OF INJECTION	FLUID INJECTED	ACRES	PAY THICKNESS ft.	POROSITY %	PERME- ABILITY md.	CONNATE WATER %	OIL IN PLACE MBbls.	RECOVERY		ANNUAL	ANNUAL	CUMMULATIVE	CUMULATIVE	
														PRIMARY %	SECONDARY %	OIL Bbls.	GAS MCF	OIL Bbls.	GAS MCF	
KERLIN																				
Pettet	Columbia	1972	12-31-82	224-82		5-1-83	Water	5120	4.0	14.8	22	29	9,648	17	27	21,808			2,339,419	
KIBLAH																				
Gloyd				5-1962	346A-2007-08		Water	3170	5	14	86	24	7,222	19	21				18,441	
KRESS CITY																				
Ford	Lafayette	1957	11-1-80	134-80		1-1-81	Water	1590	3.8	12.0	48	15	2,000	24	35	4,153			286,188	124,721
LAKE ERLING SOUTH																				
Smackover	Lafayette	1985	12-1-92	85-92		8-1-93	Gas	1600	124.0	9.0		22	5,362	22.2	21	2,493	23,217		789,684	11,863,414
LANEY ROAD																				
Cotton Valley	Union	2004	04-01-12	053-2012-03				220	11	18	514	22	1,181	24.5	15.5	2,101			5,527	
LAPILE																				
Cotton Valley	Union	1989	8-1-89	57-89		8-1-90	Water	285	5.3	23.6	51	40	1,521	35	45	2,557			242,483	
LEWISVILLE																				
Lime	Lafayette	1969	5-1-75	21-75		8-1-75	Gas & Water	458	140.0	24.0	44	30	18,130	25	39	79,469	197,170		5,006,505	10,404,614
Glen Rose	Lafayette		2-1-1956	3-1956	1-1997		Water	480	16	17-22	50-300	30	3,500	18	7					
Lewisville Old Town																				
Baker	Lafayette	1958	4-1-65	15-65	16-1-2014-01	4-1-65	Water	30	18	22.9	3,656	28	624	8	22				3,702	
Magee	Lafayette	1960	6-1-69	24-69	16-1-2014-01	6-17-69	Water	40	18	22.9	3,656	54.2	415	7	9				33	
LEWISVILLE W.																				
Smackover	Lafayette	1971	9-1-86	145-86		9-1-86	Water	160	25.0	29.6	16	11	6,040	17	32	4,898	1,910		483,286	195,734
LICK CREEK	Union																			
Meakin	Bradley	1957	1-1-75	62-74	80-99	2-1-76	CO ₂	1533	12.0	33.0	1,200	32	23	18	22				2,596,630	
LISBON N.W.																				
Blossom	Union	1957	12-1-64	69-64		1-1-63	Water	500	9.0	27.00	526	31	7,332	25	35	20,991			192,755	
MAGNOLIA																				
Smackover	Columbia	1938	4-1-56	7-56		8-21-64 1-31-45	Gas Water	4494	106.0	16.5	1,085	30	288,200	49	60	174,932	242,966		88,144,315	29,892,308
MAYTON																				
Paluxy	Miller	1967	1-27-71	9-71		7-1-62	Water Gas	220	12.0	26.0		35	1,762	9	20	2,191			269,501	
MIDWAY																				
Smackover	Lafayette	1942	2-1-56	1-56		4-1-43	Water	2520	62.8	26.0	150	20	150,001	40	50	71,581	51,103		49,728,413	24,481,139
MIDWAY WEST																				
Smackover	Lafayette	1953	1-18-61	5-61		2-15-61	Water	240	27.5	25.4	10	28	8,327	15	27	759			2,425,972	
MCKAMIE-PATTON																				
Smackover	Lafayette	1940	12-1-48	33-48		8-1-49	Gas	6580	122.0	15.0	459	36	31,878	24 O 60 C	36 73	10,996			32,883,037	586,713,479
James Lime	Lafayette	1982	12-1-82	229-82		4-1-85	Water	3988	4.3	15.0	30	30	7,490	20	31	13,369			1,117,410	73,660
MCNEIL EAST																				
Pettet	Columbia	1946	2009	7-1-2009				860	10	22.00	26	25	4314	19	29.9	5,932			20,386	
NORTH SHONGALOO																				
Pettet	Columbia	1951		52-1961	150-1987		Water	3716	7	14.00	Unknown	29	12,564	20	8				576,386	
PAUP SPUR																				
Smackover	Miller	1975	6-1-2013	122-2013-05				800	20	22.00	4	32	7953	20.06	25.1	18,958			29,292	
PLAINFIELD																				
Cotton Valley	Columbia		7-1-2004	47-2004-05	2014 Ltr of Term			1122	11.4	13.0	20		2,258	24	39	388			28,648	611
RED ROCK																				
Pettet	Columbia	1975	7-1-85	188-85		1-1-86	Water	1336	5.1	15.5	14	24	5,433	24	37				173,230	
RITCHIE																				
Baker	Union	1963	12-18-68	65-68		1-12-69 5-1-70	CO ₂ Water	550	7.0	30.7	2,754	20	3,250	14	30	1,118			796,126	
RODESSA																				
Gloyd	Miller	1937	6-1-88	37-88				1594	15	20	79	26	19,400	25	36	13,730			710,211	
SANDY BEND																				
Nacatoch	Union	1947	6-1-67	33-67			None	1000	5.0	25.0		50	25,000	11	17	7,120			1,283,765	
SHULER																				
Hill																				6
Pettet				1-42															1,425,037	23,312
C.V.				1-42															34,135	227,097
Jones	Union	1937	2-15-41	6-41		6-1-44	Water	4216	33.4	20.2	355	30	101,471	36	70	60,912	5,610		64,802,566	175,312,376
LaGrone	Union	1953	2-1-1955	13-1955			Water	520	7	23	730	31	3,388	50					1,274,485	

PRESSURE MAINTENANCE AND SECONDARY RECOVERY AND UNITIZED PROJECTS IN SOUTH ARKANSAS

PRODUCTION

FIELD/ RESERVOIR	COUNTY	YEAR DISCOVERED	DATE UNITIZED	ORDER NUMBER	ORDER DISSOLVING UNIT	DATE OF INJECTION	FLUID INJECTED	ACRES	PAY THICKNESS ft.	POROSITY %	PERME- ABILITY md.	CONNATE WATER %	OIL IN PLACE MBbls.	RECOVERY		ANNUAL	ANNUAL	CUMULATIVE	CUMULATIVE
														PRIMARY %	SECONDARY %	OIL	GAS	OIL	GAS
																Bbls.	MCF	Bbls.	MCF
SHULER EAST																			
Jones	Union	1951	4-20-1953	18-1953			Water	480	21	16	53	33	3,533	12	27				418,403
SMACKOVER		1937																	
Nacatoch-Cra Unit	Union	1922		6-54 & 48-77	1983 LTR of Term		Water & Polymers	40											362,866
Nacatoch - (T.C. Murphy)	Union	1922	5-21-69	22-69		9-1-69	Steam	40	110.0	20.0	2,000	25	4,814	20	25	5,743			484,404
Nacatoch-STRU	Union	1922	8-1-69	30-69		12-1-69	In situ												
						9-1-72	comb. Water	160	54.0	20.0	2,000	25	9,452	20	27	4,580			480,752
Nacatoch-985	Ouachita	1922	9-16-70	49-70		3-3-71	Steam	985	34.0	36.0	2,000	30	61,199			93,566			13,069,925
Nacatoch-Murphy Hardy	Union	1922	5-1-1969	22-1969			Steam & Air	40	110	20	2,000	25	4,814	20	25				122,678
Nacatoch-Tinsley	Union	1922	10-18-1961	51-1961	Court Order 10-1-83		Water	320											77,476
Meakin-NAC O.	Ouachita	1923	7-28-71	40-71		10-3-71	Water	130	13.0	30.0		35	2,131	15	30	611			104,877
Meakin-Wells	Ouachita	1923	2-1-73	5-73		4-9-71	Water	660	13.0	30.0		35	10,819	15	30	1,804			361,930
SPRINGHILL																			
Pettet	Lafayette	2002	9-1-2004	102-2004-08				1145	9.84	14.5	11	29.97	6	15.3	34.3	62,836	3,615		804,431
1,003,968																			
STAMPS																			
Paluxy	Lafayette	1958	3-1-72	4-72		3-1-72	Water	149	10.6	25.0	208	35	638	35	45				71,178
Tuscaloosa	Lafayette	1955	6-1-1965	32-1965	1-1997		Water	160	4	25	208	35	512	20	20				21,583
STATELINE																			
Smackover	Union	1990	4-1-93	21-93				1048	8	20	90	20	1,559	62	66	1,704			875,451
STEPHENS																			
Buckrange- Milam	Columbia	1922	1-27-60	8-60		6-1-60	Water	480	5.0	30.6	92	43	3,082	31	53				214,698
Buckrange- Sherry	Ouachita & Columbia	1922	12-1-65	76-65	79-99	3-19-65	Water	2865	6.0	30.6	92	43	21,144	31	53				44,165
Buckrange I	Ouachita & Columbia	1922	8-1-57	38-57	79-99	1957	Water	940	7.0	30.6	92	43	8,449	31	53				903,022
Buckrange II	Ouachita & Columbia	1922	5-14-63	24-63	79-99	6-1-63	Water	2390	7.0	30.6	92	43	21,481	31	53				2,832,221
Buckrange III	Ouachita & Columbia	1922	11-1-65	72-65	79-99	11-3-65	Water	950	6.0	30.6	92	43	7,011	31	53				1,006,381
Buckrange- Murphy	Columbia	1922	10-18-62	37-62	1-97	11-62	Water	210	6.0	30.6	92	43	1,554	31	53				546,556
Buckrange- R.E. Williams	Columbia	1922	4-1-66	13-66	79-99	6-1-67	Water	360	5.6	30.6	92	43	590	31	53				156,382
Buckrange- Miller Production	Ouachita	1922	1-23-62	7-63		4-63	Water	530	7.0	30.6	92	43	4,764	31	53	3,350			676,068
Buckrange- Weaver-Smart	Columbia	1922	1-1-1963	47-62	1971 Ltr of Term			880	6	30.6	92	43	6,758	31	53				88,441
Buckrange- Townsite	Ouachita	1922		18-62	1964 Ltr of Term			600	6	30.6	92	43	4,622	31	53				58,650
Buckrange- Witt (II)	Columbia	1922	10-1-1966	49-66	1968 Ltr of Term			310	4.5	30.6	92	43	1,791	31	53				27,621
Buckrange- Wepfer	Columbia	1922	10-1-69	59-69			Water	200	6.0	30.6	92	43	540	31	53	549			72,880
Buckrange- Hall	Columbia & Nevada	1922	3-1-64	4-64	1-97	7-1-64	Water	317	4.0	30.6	92	43	1,628	31	53				69,822
Hogg	Ouachita	1949	3-1-50	8-50		5-12-50	Water	510	15.4	28.0	2,970	30	7,759	23	60	10,004			588,156
Pine Island A Sand	Columbia &		12-16-1976	71-1976	1979 Ltr of term		Water	140	12	30		28	600	27	25				530
ST. MARY																			
Hill	Lafayette	1979	9-1-88	82-88		9-1-88	Water	240	4.7	25	43	17	692	48	55	3,906			114,415
ST. MARY WEST																			
Cotton Valley (SMWBSU)	Lafayette	1984	6-30-02	82-2002-06		10-8-03	Water	880	12.0	16	58	32	3,184	30	55	10,827	4,178		128,805
36,252																			
Texarkana																			
Pettet	Miller			40-98				320	9.0	14.4	20	48	562	28	52	5,984			135,282
TROY																			
Nacatoch	Nevada	1936	7-1-67	49-67		1968	Water												
						7-1-67	Steam	997	13.2	40.0	3,000	33	27,250	11	25	14,269			977,882

PRESSURE MAINTENANCE AND SECONDARY RECOVERY AND UNITIZED PROJECTS IN SOUTH ARKANSAS

FIELD/ RESERVOIR	COUNTY	YEAR DISCOVERED	DATE UNITIZED	ORDER NUMBER	ORDER DISSOLVING UNIT	DATE OF INJECTION	FLUID INJECTED	ACRES	PAY THICKNESS ft.	POROSITY %	PERME- ABILITY md.	CONNATE WATER %	OIL IN PLACE MBbls.	RECOVERY		PRODUCTION				
														PRIMARY %	SECONDARY %	ANNUAL OIL Bbls.	ANNUAL GAS MCF	CUMMULATIVE OIL Bbls.	CUMULATIVE GAS MCF	
Tokio	Nevada	1936	7-1-67	50-67			In Situ													
Blossom	Nevada	1956	4-17-63	13-63		12-1-63	Water	542	13.0	32.0	1,000	36	10,100	50	53	4,908		824,574		
URBANA																				
Travis Peak Sand Unit (3500)	Union	1951	12-1-58	46-58	570-2008-12	12-10-58	Water	180	5.6	28.0	424	35	1,186	16	33			424,361	1,603	22,350
VILLAGE																				
Travis Peak C	Columbia	1946	4-1-1968	17-1968	1-1997		Water	360	6	26	706	25	2,514	39	57			63,395		
WALKER CREEK Smackover	Columbia & Lafayette	1968	5-1-74	20-74			Gas	14,840	50.0	11.2	219	27	237,120	19	38	19,904	157,176	30,094,559	168,644,839	
WALNUT HILL Mitchell	Lafayette	1957	3-1-90	20-90		4-1-90	Water	1,000	3.7	19.0	104	25	1,318	28	44	890		311,593	36,778	
WESGUM Smackover	Ouachita	1971	4-1-75	10-75			Gas & Water	130	10.0	15.0		30	2,394	25	40	5,564	281	1,079,799	54,504	
WESSON Buckrange									55.0											
& Blossom	Ouachita	1947	1-24-68	8-68	79-99	6-20-68	Water	880	4.3	30.0		40	7,394	30	53			694,076		
Buckrange	Ouachita	1947	1-24-68	67-67	78A-2008-03		Water	463	3.5	26.0	92	43	1,693	31	53			163,013		
Glen Rose	Ouachita	1945	8-1-66	46-66		4-18-66	Water	80	30.0	28.7	754	30	2,878	26	36			208,349		
Hogg (3150)	Ouachita	1946	7-1-48	21-48		9-1-48	Water	1,542	19.3	32.0	2,772	11	63,320	22	52	46,679	1,778	40,219,647	41,865	
Smackover	Ouachita	1967	4-8-70	12-70			Water	600	38.0	28.0	5	30	7,473	35	52	26,083		3,969,198		
WESSON N. Buckrange	Ouachita	1966	2-1-69	7-69		5-1-69	Water	440	7.0	30.5		42	3,067	25	41			231,168		
& Blossom									5.0									-		
WILLISVILLE Nacatoch	Nevada	1951	9-1-69	51-69		11-5-69	Water	282	30.0	35.0	2,000	40	4,300	4	8	8,973		687,407		
WILLISVILLE SW Smackover	Nevada	2012	1-1-15	366-2014-12			Gas	408	38.6	28	14	26	9	7.7	23.2					
WILLISVILLE W. Hogg	Nevada	1973	10-1-75	44-75		10-1-75	Water	100	8.0	32.0	800	30	1,537	30	45			131,067		
TOTAL YEAR 2014																	1,724,082	3,851,977	423,196,783	1,088,308,603

South Arkansas Production Data

SOUTH ARKANSAS RESERVOIR DATA

See last page for key to Abbreviations.

FIELD/ COUNTY	FORMATION	DEPTH (Ft.)	YEAR OF DISCOVERY	YEAR ABANDONED	API GRAVITY	PRODUCTION		
						2014 ANNUAL	2014 ANNUAL	CUMMULATIVE
						OIL (Bbls.)	GAS (MCF)	OIL (Bbls.)
AGNES ROAD Union	Smackover	6,690.00	1985	1995	37			23,308
AGNES ROAD NORTH Union	Cotton Valley	6,800.00	1989		45			33,358
ARKANA	Buckrange	2,730.00	1993		27			7,418
Lafayette	Tokio	2,986.00	1984		32	12		121,603
	Pettet	6,250.00	1983		41			64,625
	Cotton Valley	8,676.00	1981		48	27		70,713
	Haynesville	10,880.00	1983		52	825	17,042	18,677
	Smackover	11,316.00	1992		42	1056		81,701
ARTESIAN Calhoun	Meakin	2,560.00	1952		17	965		911,082
ARTESIAN EAST Calhoun	Blossom	2,854.00	1981	1992	14			2,202
ARTEX Miller	Paluxy	3,140.00	1980		26	4587		323,692
	Travis Peak	5,715.00	1979	1980				2,751
ASH BRANCH Union	Cotton Valley	6,800.00	1976	1993	39			36,210
ATLANTA Columbia	Pettet	4,620.00	1983		41	3084		198,809
	Cotton Valley	7,210.00	1943		42	11547	337	31,852,615
	Jones	8,120.00	1981	1990 TA	41			21,200
	Smackover	8,210.00	1938		46	5031		20,959,346
	C.V. & Smk.	8,400.00	1987					14,856
	Nacatoch							1,901
	Tokio					100		1,440
ATLANTA EAST Columbia	Cotton Valley	7,768.00	1971		42			583,656
	Jones	8,628.00	1971	1971	42			9,631
AURELLE Union	Nacatoch	2,303.00	1980		24	1344		72,608
BARLOW BRANCH Columbia	Smackover	7,810.00	1974	1990 TA	38			242,575
BEAR CREEK Union	Travis Peak	3,800.00	1961		44	2366		421,485
	Smackover	6,317.00	1967		29	998		1,295,100
BEECH CREEK Union	Tuscaloosa		1949	1955				4,333
	Cotton Valley	6,604.00	1972	1986 TA	40			27,081
BEECH CREEK WEST Union	Pettet	3,946.00	1984		44	3204		818,252
	Cotton Valley	6,700.00	1983		43	0		346,977
BEECH HILL Union	Smackover	7,214.00	1978	1975	36			132
BENJAMIN LAKE Union	Meakin	2,550.00	1959		18	4786		449,584
BERRY Union	Graves	2,627.00	1975		14	1991		142,830
BERT CREEK Union	Smackover	7,210.00	1978		38			411,280
	Cotton Valley	5,322.00	1991		40.1			173,792
BETHEL CHURCH Union	Smackover	7,313.00	1978	1987	42			48,665
BETHLEHEM Union	Rodessa	3,370.00	1966	1992	42			67,178
BIG BRANCH Lafayette	Tuscaloosa	2,750.00	1982	1997	21			3,991
	Paluxy	2,973.00	1981	1997	25			27,895
BIG BRANCH EAST Lafayette	Smackover	7,434.00	2005					2,764
BIG CREEK Columbia	Smackover	7,900.00	1974		34			214,698
BIG CREEK EAST Columbia	Pettet	4,610.00	2007	2008	38			726
BLOOMBURG Miller	Smackover	10,446.00	1984	1986	54			5,076
BODCAW	Kilpatrick	2,550.00	1950		30	1892		1,267,874

See last page for key to Abbreviations.						PRODUCTION		
FIELD/ COUNTY	FORMATION	DEPTH (Ft.)	YEAR OF DISCOVERY	YEAR ABANDONED	API GRAVITY	2014 ANNUAL OIL (Bbls.)	2014 ANNUAL GAS (MCF)	CUMMULATIVE OIL (Bbls.)
Nevada	Hill	2,850.00	1950		29			450,079
BODCAW CREEK	Pettet	5,986.00	1984	1987	38			4,327
Lafayette								
BOGGY BOTTOM	Tokio	2,390.00	1984	1985	37			497
Union	Tuscaloosa	3,150.00	1966	1985	52			122,248
	Hogg	3,785.00	1965		47	0		216,524
BOGGY CREEK	Paluxy	3,859.00	1981		32	5993		536,008
Miller								
BOIS D'ARC	Smackover	5,966.00	1972	1990	30			15,932
Hempstead								
BOLDING	Cotton Valley	4,145.00	1985	1990	52			29,907
Union								
BOYCE LAKE	Smackover	7,740.00	1981	1983	68			8,600
Miller								
BOYD	Smackover	6,588.00	1984	1996	70			17,480
Miller								
BOYD HILL	Smackover	6,622.00	1984	1996	11			19,496
Miller								
BRADLEY	Buckrange	2,773.00	1981		26	0		69,689
Lafayette	Buckrange (Old)	2,786.00	1925		26			207,419
BRADLEY SOUTH	Tokio					7911		90,735
Lafayette								
BRADLEY WEST	Hill	5,860.00	1955	1984	39			199,566
Lafayette	Mitchell	6,010.00	1954		44	1328		4,795,467
	Pettet	6,670.00	1984	1988	35			5,847
BRAGG	Nacatoch	1,356.00	1982		16	534		22,722
Ouachita								
BRISTER	Smackover	8,501.00	1969	1982	71			87,775
Columbia								
BRUSHY LAKE	Paluxy	3,390.00	1965	1969	25			4,187
Lafayette								
BUCKNER	Tokio	2,503.00	1969	1970	14			60
Lafayette &	Hill	3,562.00	1963	1964	24			1,190
Columbia	Travis Peak	4,800.00	1946		34	33174		7,861,764
	Smackover	7,160.00	1937		32	20157		13,478,272
BUENA VISTA	Nacatoch	1,270.00	1956		14	4335		312,949
Ouachita	Buckrange	1,960.00	1952		26			310,968
BURDELL BRANCH	Kilpatrick	2,598.00	1975	1987	48			23,210
Nevada								
BURNS POND	Smackover	7,450.00	1986		39			580,179
Union								
BURNSIDE CREEK	Rodessa	3,354.00	1975		37			56,158
Union	Travis Peak							3,169
CAIRO	Jones	7,650.00	1984	1990 TA	29	8		913
Union	Smackover	7,740.00	1948		37	2809		7,306,538
CAIRO EAST	Cotton Valley		1983	1983				107
Union	Smackover	7,761.00	1980	1983	33			3,713
CALHOUN	Smackover	8,260.00	1944	1970	50			550,785
Columbia								
CALION	Meakin		1957	1959				165
Union	Graves	2,490.00	1952		15	4899		361,096
	Blossom	2,600.00	1952		22	818		636,241
	Travis Peak	3,470.00	1957			4043		700,968
	Cotton Valley	3,535.00	1983		31	2938		275,986
	Nacatoch							4,497
CALVARY CHURCH	Cotton Valley	5,534.00	1975	1987	GAS			10,456
Union								
CAMP CREEK	Meakin	2,310.00	1960		24	3198		215,211
Union	Blossom	2,650.00	1959		24	3002		1,068,906
	Tokio	2,670.00	1980		29	9948		774,422
CANFIELD	James	5,063.00	1982		40			96,418
Lafayette	Cotton Valley		1952	1952				5,286

See last page for key to Abbreviations.						PRODUCTION		
FIELD/ COUNTY	FORMATION	DEPTH (Ft.)	YEAR OF DISCOVERY	YEAR ABANDONED	API GRAVITY	2014 ANNUAL OIL (Bbls.)	2014 ANNUAL GAS (MCF)	CUMMULATIVE OIL (Bbls.)
CAREYVILLE LANDING	Blossom	2,740.00	1962		19	0		111,078
Bradley	Travis Peak	2,901.00	1966	1966 TA	20			7,388
	Cotton Valley	3,379.00	1960		19	3206		122,793
CATESVILLE	Nacatoch		1994					184
Union	Cotton Valley	6,422.00	1973		40	4539		1,821,278
	Cotton Valley	6,500.00	1950		38			
	Cotton Valley	6,600.00			40			
	Cotton Valley	6,625.00			41			
	Jones	7,570.00			41			
	Smackover	7,700.00	1950	1976 TA	42			588,957
CENTER	Hogg	3,175.00	1953		30	5715		2,902,776
Ouachita								
CENTRAL CHURCH	Paluxy	3,264.00	1984		27	1066		147,999
Miller								
CHALYBEAT SPRINGS	Cotton Valley	8,843.00	1971	1976 TA	43			138,877
Columbia	Smackover	10,126.00	1972		45	639	64,910	15,016,085
CHAMPAGNOLLE	Graves	2,580.00	1929		28	430		33,264,858
Union	Blossom	2,690.00	1928			0		1,788
	Meakin	3,359.00	2004			200		5,446
	Tokio	2,780.00	1928			29		4,766
	Travis Peak	2,990.00	1927		26			
	Travis Peak	3,629.00	1964		28	85474		624,239
	Cotton Valley	3,995.00	1965		36	10232		2,630,041
	Cotton Valley	4,175.00	1970		38			
	Smackover			1946		183883		210,149
MOODY AREA	Travis Peak			1973				4,618
CHAMPAGNOLLE LNDG.	Baker	2,602.00	1958		16	12990		3,229,567
Union								
CHARIVARI CREEK	Nacatoch	2,380.00	1963		19	16675		880,506
Bradley								
CHICKEN CREEK	Tokio	3,210.00	1966	1967	21			1,570
Miller	Paluxy	3,886.00	1986		33.6	0		69,347
CHICKEN CREEK S.W.	Paluxy	3,760.00	1996		30	1416		29,066
Miller								
CHRISTMAS	Tuscaloosa	3,650.00	1961			645		79,096
Miller	1st Sturgis	3,112.00	1957			2399		1,288,586
	2nd Sturgis	3,175.00	1960	1977 TA				74,349
	3rd Sturgis	3,332.00	1960	1964 TA				6,259
	4th Sturgis	3,345.00	1957	1962 TA				48,469
	Paluxy	3,120.00	1983		31	653		22,020
	Hill	4,620.00	1984		46			73,433
CLEAR CREEK	Tokio	2,432.00	1956	1957	15			6,015
Lafayette								
CLEVELAND BRANCH	Smackover	7,200.00	2005			15047	4,621	326,035
Lafayette								
COLLEGE HILL	Smackover		1948	1949				5,755
Columbia								
COLUMBIA	Pettet	4,559.00	1978		40	25244	696	241,678
Columbia	Smackover	8,030.00	1942	1950	65			10,401
CORINTH CHURCH	Smackover	10,126.00	1972	1975	46			7,521
Columbia								
CORNIE CREEK	Cotton Valley	7,166.00	1972	1994	40			130,228
Union	Cotton Valley	7,230.00	1975		40			
	Cotton Valley	8,621.00	1976		62			
CORNISH BRANCH	Mitchell	5,700.00	1964		40	4160		1,345,851
Lafayette	Cotton Valley	8,818.00	1975	1979	50			8,604
	Haynesville							4,646
CRAIG	Arkadelphia	2,125.00	1965	1984	42			4,629
Union	Tuscaloosa	3,030.00	1966	1987	31			28,687
CRAIN CITY	Baker	2,642.00	1976		16	2207		423,829
Union								
CROSS COUNTRY SL.	Baker	2,570.00	1959		16	613		1,094,004
Calhoun	Graves	2,596.00	1980	1989 TA	16			8,435
	Travis Peak	3,040.00	1985		29			49,665

See last page for key to Abbreviations.						PRODUCTION		
FIELD/ COUNTY	FORMATION	DEPTH (Ft.)	YEAR OF DISCOVERY	YEAR ABANDONED	API GRAVITY	2014 ANNUAL OIL (Bbls.)	2014 ANNUAL GAS (MCF)	CUMMULATIVE OIL (Bbls.)
CROSSETT Ashley	Cotton Valley	3,726.00	1980		18	8030		289,660
CUMMINGS Miller	Smackover Rodessa	8,681.00 5,141.00	1977 1997	1993	66 30	1620	440	235,825 127,686
CUMMINGS EAST Miller	Rodessa							2,769
CURTIS CREEK Union	Hill Tuscaloosa	3,118.00 3,106.00	1981 1989		39 43	3938 0		1,847,291 73,300
CYPRESS Columbia	Haynesville	10,704.00	1996		60	7269	145,179	290,242
CYPRESS CREEK Union	Graves Blossom	2,755.00 2,840.00	1967 1968	1984 TA	16 21	2352		83,915 94,262
	Tokio	2,875.00	1964		26	5066		270,178
	Travis Peak	2,900.00	1961		30	1684		898,395
CYPRESS LAKE Miller	Paluxy Paluxy	4,690.00 4,100.00	1985 1995	1988		3334	557	219,572 84,393
Lafayette & Miller	Paluxy-Stewart Kilpatrick			1963				707
	Hill	4,690.00	1958	1960				5,321
CYPRESS LAKE SOUTH Miller	Ford	8,359.00	1985	1985	63			16,833
CYPRESS LAKE WEST Miller	Smackover	8,359.00	1985	1993	63			20,539
DAYS CREEK Miller	Smackover Cotton Valley	8,152.00 7,362.00	1972 1992		47 43	20614		8,111,580 31,623
DAYS CREEK SOUTH Miller	Smackover Cotton Valley	8,520.00 7,584.00	1986 1994	1995	68			4,540 898
DICKSON ROAD Columbia	Smackover	7,932.00	1980	1988	35			26,545
DODDRIDGE Miller	Pettet	6,875.00	1987		41	0		53,351
DODDRIDGE WEST Miller	Anhydrite	6,150.00	1959	1959	36			954
DOOLEY CREEK Lafayette	Buckrange Smackover	2,770.00 10,935.00	1954 1970	1972	28 48			336,909 30,323
DORCHEAT-MACEDONIA Columbia	Rodessa Rodessa	4,500.00 4,674.00	1955 1988		33	20947		1,791,135
	James	4,775.00	1957			3798		354,964
	Pettet	5,172.00	1970		41	16979		1,159,730
	Travis Peak	5,944.00	1950		43	1		1,025,976
	Travis Pk/Cotton Val.							5,994
	Cotton Valley	8,010.00	1943		38-72	1417662	8,116,790	40,463,911
	Buckner	7,914.00	1984	1985	46			270
	Smackover	8,870.00	1939			11561	21,503	9,635,191
	Tokio					1400		3,224
DRY CREEK Union	Graves Tokio	2,740.00 2,910.00	1986 1958	1992 1958	20 32			619 1,826
DRY FORK Lafayette	Tokio	3,200.00	1989		41			92,490
DUTY Lafayette	Mitchell	5,768.00	1979		43			631,092
EL DORADO EAST Union	Nacatoch (Old) Meakin	2,170.00 2,500.00	1921 1956		20 23	11050		12,462,769 14,571
	Blossom	2,750.00	1953	1968	24	3387		11,054
	Tokio	2,919.00	1986			2605		43,432
	Saulsbury	2,935.00	1954	1967	27	0		9,339
	Cotton Valley	4,990.00	1983		32	20622		150,023
	Travis Peak	4,000.00	1970		20	5636		65,040
AMASON AREA	Blossom							21,694
	Graves			1958				19,844
	Saulsbury	2,935.00	1954	1990 TA	27			330,167
	Travis Peak	2,962.00	1971		44	1468		140,464

See last page for key to Abbreviations.						PRODUCTION		
FIELD/ COUNTY	FORMATION	DEPTH (Ft.)	YEAR OF DISCOVERY	YEAR ABANDONED	API GRAVITY	2014	2014	CUMMULATIVE OIL (Bbls.)
						ANNUAL OIL (Bbls.)	ANNUAL GAS (MCF)	
EZZELL AREA	Nacatoch	2,130.00	1951		21	521		41,861
	Meakin	2,500.00	1956		23	3691		125,537
	Graves	2,675.00	1952		23	2276		39,679
	Blossom	2,750.00	1953		24	603		64,150
	Tokio	2,880.00	1951		21	1531		16,743
	Hogg	3,400.00	1956	1986	34			23,135
	Saulsbury	2,925.00	1951		26	1681		78,036
	Travis Peak	2,962.00	1951		29	11531		287,695
	Cotton Valley	5,951.00	1969		36	1731		2,037,650
	Smackover	6,210.00	1969		22	0		396,031
SAULSBURY AREA	Blossom			1966				247
	Saulsbury	2,935.00	1951	1990 TA	27	0		412,264
	Nacatoch							77,713
EL DORADO SOUTH	Nacatoch	2,200.00	1920		32	9746		56,518,009
	Union	Tokio	2,875.00	1957		32	0	46,660
		Cotton Valley	7,719.00	1980	1986 TA	40		2,243
		Smackover				34		138,240
ELLIOTT	Nacatoch	1,937.00	1974			1936		84,777
	Ouachita							
ELLIOTT SOUTH	Nacatoch	1,858.00	1982		16	0		11,577
	Ouachita							
ENYART LAKE	Mitchell	5,874.00	1971		38			185,365
	Lafayette							
EVANS	Smackover	7,565.00	1981	1987	35			4,874
	Columbia							
FALCON	Nacatoch	1,180.00	1938		14	3482		1,078,049
	Nevada &	Blossom	2,360.00	1954		16-26	0	265,936
	Lafayette	Tokio	2,100.00	1947		15-28	3276	2,169,361
		Tuscaloosa	2,300.00	1966	1971	17		6,658
		Hill	2,384.00	1983	1989 TA	17		2,156
	Travis Peak	3,362.00	1983		28		26,590	
FELSENTHAL	Cotton Valley		1948	1954				7,322
	Union							
FIELD BAYOU	Cotton Valley	7,724.00	1966	1968	36			3,807
	Lafayette	Smackover	9,386.00	1959	1988	43		21,129
FISH LAKE	Rodessa	5,330.00	1982	1984	33			2,399
	Miller							
FORKY DEER	Travis Peak			1982				184
	Miller							
FORT LYNN	Tokio	3,253.00	1967		37	85		319,263
	Miller	Rodessa	5,990.00	1947		38-52		
		Kilpatrick					0	25,661
		Hill					173	23,401
		Gloyd			1986 TA			41,114
		Dees Lime						10,282
		Young						58,378
	Pettet	6,700.00	1983		37		4,933	
	Cotton Valley	8,759.00	1981	1982			962	
FORT LYNN EAST	Hill	6,037.00	1984		38			23,725
	Miller							
FOUKE	Cotton Valley		1992					1,190
	Miller	Buckrange	2,809.00	1963				108,330
		Beauford					2463	178,560
		Tokio	2,920.00	1952		22	15695	1,692,409
		Tokio, First					3431	26,804
		Tuscaloosa	3,385.00	1953		34	3452	230,354
		Sturgis D					4338	21,798
		Sturgis, First		1940		24-43	1288	20,695
		1st Sturgis-C						
		1st Sturgis SUSW						
	1st Sturgis Sand						1,727	
	PSU Sturgis C Unit					8416	130,820	

See last page for key to Abbreviations.						PRODUCTION		
FIELD/ COUNTY	FORMATION	DEPTH (Ft.)	YEAR OF DISCOVERY	YEAR ABANDONED	API GRAVITY	2014 ANNUAL OIL (Bbls.)	2014 ANNUAL GAS (MCF)	CUMMULATIVE OIL (Bbls.)
	PSU Nesbett A Unit					0		1,380
	Sturgis, Second					3111		36,145
	Sturgis, Third					7248		89,060
	Sturgis, Fourth					38136		274,216
	Paluxy	3,400.00	1940			86740	312	30,255,199
	Mooringsport		1947					411,505
	Kilpatrick	4,550.00	1940	1969				1,003
	Kilpatrick				37			7,829
	Pettet	5,712.00	1984	1987 TA	38			4,386
	Travis Peak	6,340.00	1980	1981	48			1,846
	Smackover	8,977.00	1955		64	14717	598,704	2,313,701
FOUKE NORTH	Tokio	3,120.00	1953		16			23,044
Miller	Tuscaloosa	3,350.00	1951		20-36	6386		4,049,280
	Paluxy	3,550.00	1951		17-33	1		1,593,041
	Smackover	8,490.00	1981	1989 TA	64			30,663
FOUKE WEST	Tuscaloosa	3,580.00	1953		32-35			162,290
Miller	Paluxy	4,180.00	1952		23-38	4214		2,022,042
	Paluxy	4,435.00	1974		36			
	Paluxy	4,492.00	1976		38			
	Paluxy	4,661.00	1972		50			
	Mooringsport	4,620.00	1967		40			78,134
	Smackover	9,456.00	1994		57	794	40,265	173,982
FOUR MILE CREEK	Smackover	8,058.00	1972		40			228,796
Miller								
FOUR MILE CREEK SO.	Smackover	8,230.00	1987		44			91,760
Miller								
FROG LEVEL	Smackover	8,189.00	1981	1986	34			61,722
Columbia								
GALILEE CHURCH	Smackover	7,522.00	1975	1995	29			67,968
Lafayette								
GARLAND CITY	Buckrange	2,410.00	1959	1969	18			124,997
Miller	Tuscaloosa	2,980.00	1960	1964	19			11,052
	Paluxy	3,805.00	1951	1962 TA	13-18			186,986
	Paluxy	2,925.00	1932		31	2340		2,689,573
GARNER CREEK	Cotton Valley	6,936.00	1979	1990 TA	44			49,657
Union								
GENOA	Tokio	2,980.00	1957	1975 TA	28			4,273
Miller	Paluxy	3,350.00	1957		39	5159		1,655,580
	Smackover	7,925.00	1977	1981	51			55,117
GOLD POINT CHURCH	Smackover	5,760.00	1987	1995	62			24,268
Miller								
GOODMAN CREEK	Cotton Valley					428		3,569
Union								
GRAVES CREEK	Hill	3,102.00	1991	1993	39			14,342
Union								
GRAYSON	Smackover	8,008.00	1993		38	223180	292,565	16,193,716
Columbia								
GREEN GROVE	Graves	2,807.00	1984	1993	22			18,025
Union	Travis Peak	3,202.00	1984	1993	21			
GREERS CHURCH	Pettet	4,280.00	1979		38	3195	48	126,581
Columbia								
GREGORY	Cotton Valley	7,966.00	1978		41	2977		250,961
Union	Jones	9,208.00	1981	1984	42			3,657
GUM CREEK	Nacatoch	1,590.00	1941		17	4584	132	1,439,168
Ouachita	Blossom	2,255.00	1945		20	0		11,963
	Tokio	2,470.00	1945		17	6194	192	475,912
	Hogg	2,766.00	1965	1966	22			3,018
	Travis Peak	3,375.00	1964		38	4732	132	690,615
	Cotton Valley	4,385.00	1964		45			258,422
	Smackover	5,866.00	1965		23	7635	168	444,506
	Pettet	3,500.00	2011		25	1306	72	7,379
HAMPTON	Nacatoch	2,286.00	1954	1958	16			164
Calhoun	Meakin	2,480.00	1943		14	2341		37,525

See last page for key to Abbreviations.						PRODUCTION		
FIELD/ COUNTY	FORMATION	DEPTH (Ft.)	YEAR OF DISCOVERY	YEAR ABANDONED	API GRAVITY	2014 ANNUAL OIL (Bbls.)	2014 ANNUAL GAS (MCF)	CUMMULATIVE OIL (Bbls.)
HARMONY Columbia	Smackover	9,747.00	1975	1976	42			2,939
HARMONY GROVE Miller	Smackover	7,832.00	1980	1993	47			166,621
HARPER CREEK Columbia	Cotton Valley	5,800.00	1985	1988	41			13,021
	Smackover	7,563.00	1985	1988	41			5,624
HAWKINS CREEK Columbia	Smackover	7,091.00	1979	1982				4,809
HAYNESVILLE Columbia	Pettet	5,470.00	1942		39	4296		6,808,017
	Cotton Valley	8,850.00	1972		40			80,853
Columbia & Claiborne Par.	Smackover B	10,383.00	1959		47	24	43,022	32,325
	Smackover							855
HAYNESVILLE NORTH	Pettet	5,574.00	1961		39	2154		142,697
	Cotton Valley	8,724.00	1981	1993	47			93,845
	Smackover	10,500.00	1980	1986	52			54,776
HENDERSON CREEK Columbia	Travis Peak	4,233.00	1976		43	705		232,979
HERVEY Miller	Rodessa	3,610.00	1955	1985	37			15,106
HIBANK Union	Nacatoch	2,080.00	1942		40	8950		2,994,358
	Meakin	2,440.00	1952		31			2,746,817
	Graves	2,555.00	1952		32			733,647
	Tokio	3,126.00	1986	1991 TA	41			8,134
	Tuscaloosa	3,020.00	1953		49	1081		989,992
	Glen Rose		1955	1956				2,403
	Rodessa	3,300.00	1977	1991 TA		0		35,699
	Hogg	3,145.00	1963	1985 TA	48			56,230
	Pettet		1961	1965				108,419
	Travis Peak	4,006.00	1963		45	0		504,873
	Cotton Valley		1959	1960	36			7,418
HIBANK SOUTH Union	Hogg		1954	1985 TA				57,595
	Travis Peak	3,480.00	1952	1964	34			615,004
	Cotton Valley	6,396.00	1986	1986				415
HIBANK CREEK Union	Tuscaloosa	3,065.00	1959		29	1253		298,830
HILLSBORO Union	Nacatoch	2,230.00	1930		23	108		2,336,383
	Primm	2,554.00	1984	1986				
	Meakin	2,560.00	1959	1983	22			435
	Tuscaloosa	3,050.00	1984	1987 TA				301,312
	Travis Peak	3,390.00	1981		36	17406		391,357
HILLSBORO SOUTH Union	Rodessa	3,545.00	1965	1983 TA	45	0		130,448
	Hogg	4,510.00	1966	1985 TA	44	0		176,479
	Travis Peak			1968				1,173
HOGG Union	Cotton Valley	5,575.00	1979		35	0		141,348
	Smackover	6,980.00	1984	1985	42			3,547
HOLLY SPRINGS CH. Miller	Tuscaloosa	3,476.00	1980	1988	36			19,792
HOLMES CREEK Union	Blossom	2,600.00	1952		24	1328		604,925
	Tokio	2,745.00	1967	1991 TA	28	462		55,313
HOOKER BRANCH Miller	Smackover	8,144.00	1974	1984	46			48,737
HORSEHEAD Columbia	Pettet	5,850.00	1952		36	0		4,630,763
	Smackover	10,630.00	1989	1991 TA	46	283		790
HORSEHEAD CREEK Columbia	Smackover	9,798.00	1985	1990	35			35,929
IRMA Nevada	Nacatoch	1,150.00	1920		14	22727		13,069,014
	Tokio	2,586.00	1963		30	20304		3,644,901
	Paluxy	2,668.00	1963		32			276,325
	Glen Rose		1953	1962 TA				43,038
	Travis Peak	3,015.00	1953		30			666,199
	Cotton Valley		1955	1955				3,375
	Smackover	4,712.00	1972		28	19776	480	2,662,628
	Rodessa	2,372.00	1993		26			6,637

See last page for key to Abbreviations.						PRODUCTION		
FIELD/ COUNTY	FORMATION	DEPTH (Ft.)	YEAR OF DISCOVERY	YEAR ABANDONED	API GRAVITY	2014 ANNUAL OIL (Bbls.)	2014 ANNUAL GAS (MCF)	CUMMULATIVE OIL (Bbls.)
LOUTRE CREEK Union	Cotton Valley Smackover			1982 1954				3,024 105,572
LOWERY BRANCH Union	Smackover	8,935.00	2001			5495		87,544
MAGNOLIA Columbia	Rodessa Pettet	3,220.00 4,222.00		1958 1988				5,326 91,219
	Travis Peak	4,870.00	1979	1989	43 44	13627	468	56,895
	Cotton Valley	6,390.00	1943		47	2363	1,662	1,700,377
	Smackover	7,500.00	1938		38	180212	242,966	170,903,640
MANDEVILLE Miller	Smackover	6,208.00	1975		33	335		149,300
MARS HILL Lafayette	Cotton Valley Smackover			1969 1985				2,509 95,045
MARYSVILLE Union	Cotton Valley Smackover	6,023.00	1970	1973	42			3,138 158,040
MAYTON Miller	Tuscaloosa Paluxy	2,940.00 3,620.00	1967 1967		27 16	1041 2753		52,767 521,542
	Mooringsport	3,952.00	1976	1987	31			30,317
MCDONALD Ouachita	Sligo	2,821.00	1929	1932	31			117,085
MCKAMIE NORTHEAST Lafayette	Smackover	8,230.00	1982	1990	66			64,334
MCKAMIE PATTON Lafayette	Gloyd James	4,755.00 5,014.00	1973 1971		31 38	10826 13369		950,908 2,437,205
	Cotton Valley	7,306.00	1970		45	74310	18,250	4,053,607
	A Lime							37,749
	Smackover	9,100.00	1940		55	10996		32,880,032
	Paluxy							3,916
	Travis Peak	8,310.00	1998			0		4,065
MCKAMIE SOUTH Lafayette	Smackover	9,340.00	1986	1989	55			3,107
MCKINNEY BAYOU Miller	Tokio Tuscaloosa	2,810.00 3,050.00	1975 1955	1982 1989 TA	32 20			6,194 54,331
	Paluxy	3,398.00	1955		31	3889		1,907,437
	Glen Rose	3,930.00	1955	1990 TA	39	1327		61,019
	Mooringsport	3,957.00	1985	1986 TA	25			2,565
MCLENDON BRANCH Columbia	Smackover Buckner		1991 1992		42	283		506,648 10,079
	Pettet	4,814.00	1993					9,751
MCNATT Nevada	James	2,666.00	1976	1992	20			2,429
MCNEIL EAST Columbia	Pettet Travis Peak	3,490.00 4,040.00	1946 1977		29 48	5932 426		886,446 164,487
	Tokio							1,957
MEDLOCK Columbia	Smackover			1965				535
MERIWETHER LAKE Lafayette	Tuscaloosa Mooringsport	2,700.00 3,418.00		1993	20 18			26,554 6,323
	Smackover	7,082.00	1982		23	1500	39	209,932
	Tokio	2,275.00	1995		17	2512	60	51,491
MERIWETHER LAKE S. Lafayette	Paluxy	2,816.00	1981		14	69		26,101
MERIWETHER LAKE SE Lafayette	Smackover	7,282.00	2007					2,729
MIDWAY Lafayette	Tokio Tuscaloosa	2,106.00 2,390.00	1973 1973		12 12			35,416 2,278
	Rodessa	3,526.00	1969	1970	29			685
	Smackover	6,400.00	1942		36	71581	51,103	83,916,455
MIDWAY EAST Lafayette	Tokio Tuscaloosa	2,185.00 2,475.00	1958 1970		18 32	1576 1169		314,570 452,841

See last page for key to Abbreviations.						PRODUCTION		
FIELD/ COUNTY	FORMATION	DEPTH (Ft.)	YEAR OF DISCOVERY	YEAR ABANDONED	API GRAVITY	2014 ANNUAL OIL (Bbls.)	2014 ANNUAL GAS (MCF)	CUMMULATIVE OIL (Bbls.)
NORPHLET Union	Cotton Valley			1959				1,632
O'BRIEN Union	Pettet	3,987.00	1972	1996	36			55,368
OGEMAW Ouachita	Blossom	2,050.00	1967	1968	30			630
OLD UNION Union	Blossom	2,730.00	1961	1985 TA	23			63,870
OLIN FOREST Union	Tuscaloosa	3,200.00	1956	1970	47			390,250
	Rodessa	4,300.00	1964	1984 TA	44			15,020
	Hogg Sand	4,400.00	1960		72	0		722,142
	Travis Peak	4,519.00	1969	1970	50			3,859
OLIN FOREST NORTH Union	Rodessa	3,155.00	1966		43			226,896
	James Lime	3,328.00	1966		42			421,279
	Hogg	3,573.00	1966		41	2402		591,926
	Travis Peak	3,943.00	1966	1989 TA	43	1566		244,719
	Cotton Valley	4,807.00	1966	1970 TA	18			42,009
	Cotton Valley	5,011.00	1988	1988	38			1,368
PACE CITY Ouachita	Meakin	2,190.00	1947		27	1648		491,148
	Graves	2,350.00	1967	1986	18	34		6,428
	Blossom	2,470.00	1967		23	431		120,660
	Tokio	2,565.00	1978		29	170		44,646
	Glen Rose	3,105.00	1947		31	5368		1,281,615
	Rodessa	2,740.00		1965	29			44,182
	Hogg Sand	3,055.00	1957		30	392		133,879
	Travis Peak	3,200.00	1951		27	4678	619	861,177
	Cotton Valley	4,236.00	1985		40	773	100	58,173
	Smackover	5,622.00	1976		25	17389	354	630,704
PACE CITY EAST Ouachita	Nacatoch			1964 TA				
	Meakin	2,290.00	1953		27	1653		712,761
	Graves	2,400.00	1952		21	1692		853,237
	Rodessa	2,953.00	1972		30	545		58,054
	Pettet	2,820.00	1965	1989 TA	26	0		15,243
	Travis Peak	2,817.00	1954	1973	18			19,087
	Smackover	5,645.00	1969	1976	27	11040		111,825
PACE CITY WEST Ouachita	Smackover	5,816.00	2007			3411		44,060
PALM Lafayette	Smackover	6,556.00	1963		35			119,464
PALM WEST Lafayette	Paluxy	3,187.00	1984		23	2838		156,696
PATMOS Hempstead	Tuscaloosa	2,220.00	1970	1971	18			507
	Smackover	5,860.00	1966	1971	28			22,595
PATMOS NORTH Hempstead	Tokio	1,884.00	1982		19	2546		179,733
PAUP SPUR Miller	Pettet	4,084.00	1978	1990	30			71,842
	Travis Peak	4,260.00	1985	1990	16			2,524
	Smackover	6,150.00	1975		43	18958		1,735,434
PIGEON HILL Bradley & Union	Travis Peak	2,923.00	1955	1985 TA	18			4,471
	Cotton Valley	4,287.00	1955		15			251,510
PILL BRANCH Miller	Jeter	6,115.00	1987		41			55,498
	Rodessa							412
PINE LOG CREEK Ouachita	Smackover	5,505.00	2007			1638		39,489
PINE TREE Columbia	Cotton Valley	6,863.00	1969	1985				2,093
	Smackover	8,425.00	1949		44	3070		1,548,330
	Travis Peak	4,672.00	1993	1995				
PISGAH Columbia	Pettet	5,500.00	1977		38	37101		227,257
	Cotton Valley	10,532.00	1982	1991 TA	48			53,809
PLAINFIELD Columbia	Pettet	5,839.00	1965		34	964		142,207
	Cotton Valley	9,184.00	1957		44	388		1,523,404
	Rodessa	4,990.00	1989		43			37,223

See last page for key to Abbreviations.						PRODUCTION		
FIELD/ COUNTY	FORMATION	DEPTH (Ft.)	YEAR OF DISCOVERY	YEAR ABANDONED	API GRAVITY	2014 ANNUAL OIL (Bbls.)	2014 ANNUAL GAS (MCF)	CUMMULATIVE OIL (Bbls.)
PLEASANT GROVE Union	Travis Peak	3,581.00	1967	1977 TA	42			54,334
PLEASANT HILL Miller	Cotton Valley Smackover	8,327.00	1974	1981 1979	63			7,117 45,199
PLEASANT VALLEY Lafayette	Cotton Valley	9,068.00	1980	1981	38			1,846
PLEASANT VALLEY SO. Lafayette	Rodessa		1990		42	1420		303,773
POISON SPRINGS Ouachita	Meakin			1963				129
PROMISED LAND CHURCH Miller	Hill	5,968.00	1985	1985	40			200
PRUDHOE BAY SOUTH Lafayette	Tokio Paluxy	2,688.00 3,681.00	1988 1990		17 22			14,062 3,088
RAINBOW SOUTH Union	Nacatoch Tuscaloosa	2,208.00 3,078.00	1986 1982	1989 TA	21 40			397 358,550
	Rodessa		1982	1982				2,304
	Travis Peak	3,315.00	1980	1986 TA	32	0		15,181
	Cotton Valley	4,653.00	1967	1985	34			7,379
	Pettet					0		786
RAMSEY CREEK Union	Tokio Sligo	2,978.00	1983	2008 PA	19			1,590 6,291
RAWLS CREEK Lafayette	Ford	8,316.00	1976	1989 TA	54			56,132
RED ROCK Columbia	Pettet	5,633.00	1975	1997	40			657,837
RICHLAND CREEK Union	Tokio	2,768.00	1971	1980 TA	32			21,386
RILEY BRANCH Columbia	Cotton Valley	6,877.00	1977	1980	41			4,177
RITCHIE Union	Baker	2,606.00	1963		16	1118		1,232,374
RIVER BEND Union	Blossom	2,731.00	1959	1963	16			338
ROCKY MOUND Columbia	Gloyd	5,600.00	1962	1965	33			19,388
ROCKY MOUND SOUTH Miller	Hill Lower Hill	5,558.00 5,622.00	1981 1983	1992	70 38			45,893
RODESSA Miller	Rodessa Jeter	6,050.00 5,900.00	1937 1964		42 65	6483 3421		9,312,185 94,386
	Hill	6,025.00	1983		28	257		39,153
	Gloyd	6,122.00	1983		45	13730		795,641
	Pettet	6,784.00	1990		44	4372		129,146
RODESSA NORTH Miller	Wisinger		1943	1963				101,912
RODESSA WEST Miller	Hill Jeter	5,965.00 6,000.00	1959 1980	1996 1988	40 46			258,949 36,611
	Mitchell	6,090.00	1960		41	0		67,509
RONDO Miller	Smackover	6,517.00	1982	1984				2,488
SALEM CHURCH Union	Travis Peak Cotton Valley	4,296.00 5,328.00	1964 1967		42 35	2350		184,392 3,139
	Smackover	6,945.00	1984	1975	69			278,329
SALEM GRACE CHURCH Lafayette	Cotton Valley	8,740.00	1990		44			24,392
SAMS Miller	Smackover	8,100.00	2011					1,919
SANDY BEND Union	Nacatoch Blossom	2,270.00 2,762.00	1947 1956		19 25	35485		13,614,259 35,792
	Travis Peak	3,357.00	1984		25	0		15,433
SAUL'S CHAPEL Union	Tuscaloosa Travis Peak	3,180.00 3,880.00	1964 1964	1990 1985	45 43			431,444 76,418

See last page for key to Abbreviations.						PRODUCTION		
FIELD/ COUNTY	FORMATION	DEPTH (Ft.)	YEAR OF DISCOVERY	YEAR ABANDONED	API GRAVITY	2014 ANNUAL OIL (Bbls.)	2014 ANNUAL GAS (MCF)	CUMMULATIVE OIL (Bbls.)
SEMINARY CHURCH	Buckrange	2,269.00	1972	1985 TA	29			4,307
Ouachita	Blossom	2,427.00	1971		30			43,327
	Tokio	2,540.00	1971		18	108		126,461
SHEPHERD	Nacatoch			1957				1,308
Union	Travis Peak	3,140.00		1967	38			47,478
SHEPPARD BRANCH	Hill	3,222.00	1995		44			33,713
Union	Rodessa					858		31,006
SHILOH	Tokio	2,700.00	1964		14	3864		600,320
Lafayette	Tuscaloosa	2,975.00	1966		19	85		117,398
	Paluxy	3,025.00	1966		23	0		208,504
	Smackover					7570	2,293	53,942
SHONGALOO NORTH	Pettet	5,750.00	1951	1987 TA	40			576,386
Columbia								
SHORT	Blossom	2,858.00	1969		20	76		19,588
Union								
SHULER	Graves			1951 TA				93
Union	Blossom			1971 TA				
	Tuscaloosa	3,100.00	1952		38	0		558,981
	Glen Rose			1971 TA				
	Hill Sand	3,160.00	1954		42	3364		1,460,663
	Pettet	4,010.00	1950		42	60613		3,906,245
	Travis Peak			1971 TA				
	Morgan Sand	5,500.00	1937		41			4,502,080
	Cotton Valley	5,580.00	1953		42	46063	257	10,991,337
	Mayfield B Sand	5,590.00	1952		42	1040		1,628,508
	Lagrone Sand	5,700.00	1953	1989 TA	42			1,912,483
	Jones	7,530.00	1937		34	78953	5,610	83,551,118
	Reynolds			1955				7,728,942
SHULER EAST	Tuscaloosa	3,075.00	1977		42			45,591
Union	Pettet	3,930.00	1951		45	2202		613,961
	Morgan Sand	5,580.00	1941		46	1034		2,008,115
	Cotton Valley	7,130.00	1951		38	1882		1,433,788
	Jones	7,530.00	1951		40			100,551
	Smackover	7,640.00	1951		46	408		211,675
SMACKOVER	Uncontrolled	1,920.00	1922		19	1735666		598,784,934
Union &	Travis Peak	3,100.00	1953		31	8279		4,575,168
Ouachita	Cotton Valley	4,050.00	1976		38	1024		113,593
	Smackover	5,900.00	1978	1986	31	4658		47,628
	Meakin					2581		39,473
	Nacatoch							1,882,725
BILYEU AREA	Travis Peak	2,668.00	1968		26			320,499
BOLLENBACKER AREA	Travis Peak	3,250.00	1970		34	2326		279,545
KIRKLAND AREA	Travis Peak	3,360.00	1964	1965	25			4,095
LINGLE BACH AREA	Cotton Valley			1963		103889		104,011
ROSENBAUM AREA	Travis Peak	3,092.00	1958	1965	24			43,684
SAND LAND AREA	Cotton Valley	4,050.00	1960	1969	39			86,912
	Travis Peak		1961	1972	36			77,039
SHULER AREA	Travis Peak	3,370.00	1970	1991	35			46,921
STEVENSON AREA	Travis Peak	2,930.00	1980		43	1685		84,769
TURNER AREA	Travis Peak	2,926.00	1951		40			131,323
SMITHVILLE	Blossom	2,960.00	1966		36			21,309
Union								
SNOW HILL	Travis Peak	3,300.00	1956		31	6211		693,546
Ouachita	Cotton Valley	3,363.00	1955		35	11950		4,484,634
	Smackover	4,821.00	1936			4269		897,659
	Tokio	4,896.00	1983			0		99
SPIRIT LAKE	Buckrange			1949				3,663
Lafayette	Tokio	2,702.00	1980		18	970		49,058
	Tuscaloosa	3,170.00	1978		33	1059		178,284
	Goodland Lime	3,600.00	1949		36	682		373,186
	Paluxy	3,740.00	1947		34	6963		2,802,468
	Mooringsport	3,873.00	1947		29	2716		173,323
	Kilpatrick	4,100.00	1946	1972 TA	38			1,575,451
	Hill		1979		42			88,842
	Smackover	7,051.00	1971		54	1257	15	273,723
	Glen Rose					1161		26,446

See last page for key to Abbreviations.						PRODUCTION		
FIELD/ COUNTY	FORMATION	DEPTH (Ft.)	YEAR OF DISCOVERY	YEAR ABANDONED	API GRAVITY	2014 ANNUAL OIL (Bbls.)	2014 ANNUAL GAS (MCF)	CUMMULATIVE OIL (Bbls.)
SPIRIT LAKE NORTH	Tokio	2,540.00	1985		17	4092		295,277
Lafayette	Tuscaloosa	3,015.00	1987	1987 TA	18			170
	Paluxy	3,834.00	1988		34			7,839
	Kilpatrick	4,468.00	1984		40			97,674
	Hill	4,579.00	1984	1984	35			1,366
SPOTSVILLE	Pettet	4,243.00	1986		36			39,856
Columbia	Smackover	7,736.00	1978	1981	54			89,647
SPRING BRANCH	Nacatoch	2,150.00	1984	1985	39			267
Union	Smackover	7,367.00	1981	1985				2,204
SPRINGHILL	Tokio	3,100.00	1952		41			1,562,904
Columbia	Pettet	5,840.00	1987	1988	41	62836	3,615	1,145,854
	Hill			1963				19,687
	Haynesville	11,035.00	1987		61	17137	1,340,534	3,281,596
	Haynesville/Smackover B					1047		11,254
	Nacatoch					3412		53,861
ST. JONAH CHURCH	Smackover	9,367.00	1986	1988	49			2,045
Lafayette								
ST. MARY	Hill	5,634.00	1979		38	3906		477,073
Lafayette	Mitchell	5,789.00	1978		43			1,725,769
ST. MARY WEST	Cotton Valley	8,615.00	1984		45	10827	4,178	1,074,123
Lafayette	Smackover	8,624.00	1985	1985 TA1982	61			12,604
ST. MATTHEWS	Smackover	7,763.00	1978	1982	38			1,753
Columbia								
STAMPS	Tokio	2,350.00	1955		16	8839		2,380,658
Lafayette	Tuscaloosa	2,600.00	1955		20			314,044
	Paluxy	4,070.00	1958		38	3230		2,047,665
	Mooringsport	3,040.00	1959		26			84,229
	Rodessa	3,773.00	1956		34	831		784,649
	Hill	3,459.00	1984	1985 TA	36			1,484
	Knighton			1972				10,150
	Travis Peak	4,290.00	1958	1976 TA	33			31,038
STAMPS EAST	Tokio	2,490.00	1979		19	1691		295,101
Lafayette	Tuscaloosa			1956				5,617
STAMPS NORTHWEST	Tokio	2,295.00	1956		15	5252		573,079
Lafayette								
STAMPS WEST	Tokio	2,568.00	1963	1986 TA	18			106,604
Lafayette	Paluxy	3,310.00	1976	1989 TA	17			33,605
STATELINE	Smackover	8,882.00	1990		44	1704		1,578,930
Union								
STATELINE SOUTH WEST	Smackover	8,930.00	1995		50	10845		686,878
Union								
STATELINE WEST	Smackover							22,737
STEPHENS	Nacatoch	1,402.00	1971		17	8403		895,619
Columbia &	Buckrange	2,100.00	1922		30	21138		24,218,391
Ouachita &	Tokio	2,260.00	1965		17	1054		160,413
	Rodessa	2,650.00	1949		28			678,003
Nevada	Rodessa	3,277.00	1972		32			
	Glen Rose	2,660.00	1948		30	2446		1,214,187
	James Lime	3,100.00	1945		31	0		512,201
	Hogg Sand	3,190.00	1949		35	10004		6,834,860
	Pettet	3,393.00	1981		26	16584		302,152
	Cotton Valley	4,910.00	1985		32			8,297
	Smackover	5,940.00	1956		34	37837		3,800,212
CURRY AREA	Nacatoch	1,350.00	1966	1990 TA	17			44,380
	Buckrange	1,960.00	1966	1971	33			15,314
	Rodessa	2,939.00	1967	1969 TA	16			4,360
	Travis Peak	3,300.00	1949		32			764,807
SMART AREA	All Sands	3,040.00	1941		30	52815		22,791,057

See last page for key to Abbreviations.						PRODUCTION		
FIELD/ COUNTY	FORMATION	DEPTH (Ft.)	YEAR OF DISCOVERY	YEAR ABANDONED	API GRAVITY	2014 ANNUAL OIL (Bbls.)	2014 ANNUAL GAS (MCF)	CUMMULATIVE OIL (Bbls.)
STEPHENS NORTH Nevada	Buckrange	1,990.00	1945		26	4823		549,144
STEPHENS NORTH EXT. Ouachita	Blossom	2,140.00	1950		29	1861		359,829
STOW LAKE Union	Graves Travis Peak	2,764.00	1969	1987 TA 1986	16	0		4,116 70
STRONG Union	Cotton Valley Smackover	5,890.00 6,242.00	1962 1980	1989 TA	36 32			122,130 83,350
STRONG NORTH Union	Nacatoch Travis Peak Cotton Valley	2,300.00 3,944.00 4,864.00	1958 1985 1979	1971 1986	21 39 32		1951	
SULPHUR RIVER Miller	Rodessa	5,880.00	1993	1995	41			141,558 2,220
SUNVIEW Lafayette	Paluxy	2,790.00	1965	1966	21			4,600
TATUM BRANCH Lafayette	Tuscaloosa					2348		2,348
TEXARKANA Miller	Pettet Smackover	4,926.00 7,358.00	1977 1942		36 70	8953		532,902 408,912
TEXARKANA EAST Miller	Travis Peak	5,134.00	1981	1982				2,039
THREE CREEKS Union	Cotton Valley	8,054.00	1979	1983	42			6,711
THREE CREEKS EAST Union	Cotton Valley	6,600.00	1984	1991	40			9,465
TOM CREEK Union	Nacatoch Blossom Travis Peak			1968 TA 1965 1964				
TROY Nevada	Nacatoch Tokio	1,220.00 2,150.00	1936 1936		18 18	19294		10,457,227
	Tokio 13-15-18-20 Blossom Glen Rose Travis Peak Smackover					4908 1494 29 25 795 6449	132	122,090 1,017,711 66,412 157,594 1,205,223
TROY EAST Ouachita	Nacatoch	1,309.00	1956	1989 TA	15	1234		108,705
TROY NORTH Nevada	Nacatoch Blossom Tokio Paluxy Rodessa	1,723.00 2,340.00 2,450.00 2,830.00 2,853.00	1956 1956 1956 1973 1977	1980 TA 1997 1981 TA	16 24 22 26 20			17,775 104,171 380,893 110,474 189,807
TROY SOUTH	Tokio							5,614
TUBAL Columbia & Union	Cotton Valley Smackover	8,010.00 9,280.00	1950 1950		46 51	3104		844,556 1,766,084
TURKEY CREEK Union	Tuscaloosa	3,101.00	1976	1993	41			134,709
URBANA Union	Nacatoch Meakin Graves Blossom Tokio Rodessa Hogg Thompson Crain Gregory Upper Parker Lower Parker Urbana Sand Unit (3500) Travis Peak	2,300.00 2,500.00 2,604.00 2,740.00 2,840.00 3,945.00 3,000.00 3,200.00 3,350.00 3,550.00 3,526.00 3,500.00	1930 1946 1958 1971 1953 1971 1971 1940 1951 1959 1929 1951		32 20 25 32 25 36 26 31 24 23 27	1011 38 1762 42 184 1392 2030 12089 1704 8328 12209		1,063,746 1,045,255 20,124 533,039 27,832 1,119 15,290 2,544,787 9,846,684 573,675 148,749 1,010,994 22,350 3,606,621

See last page for key to Abbreviations.						PRODUCTION		
FIELD/ COUNTY	FORMATION	DEPTH (Ft.)	YEAR OF DISCOVERY	YEAR ABANDONED	API GRAVITY	2014 ANNUAL OIL (Bbls.)	2014 ANNUAL GAS (MCF)	CUMMULATIVE OIL (Bbls.)
VILLAGE	James			1978 TA				17
Columbia	Pettet	3,990.00	1949		30	14986		401,767
	Travis Peak	4,550.00	1946		47	41819		14,337,643
	Cotton Valley	5,570.00	1946		54	26116		2,486,037
	Smackover	7,320.00	1938		47	7327		12,766,698
WALDO	Smackover	7,119.00	1989		39	2384	60	168,390
Columbia	Pettet					9961	240	132,917
WALKER CREEK	Cotton Valley			1972				655
Columbia & Lafayette	Smackover	10,870.00	1968		48	23163	187,998	35,939,895
WALNUT HILL	Mitchell	5,830.00	1957		41	27400	7,698	2,921,021
Lafayette	Pettet			1951				2,374
	Smackover			1954				208,343
WARE CREEK	Smackover	10,404.00	1979		55	2493		499,068
Columbia								
WARNOCK SPRINGS	Smackover	7,432.00	1982	1989 TA	70	6162		155,952
Columbia								
WELCOME	Smackover	11,170.00	1969		45	0		1,639,631
Columbia	Cotton Valley	8,802.00	1990		42			8,490
WESGUM	Nacatoch	1,637.00	1978		15			2,638
Ouachita	Tokio			1997				91,980
	Travis Peak							1,436
	Rodessa	2,748.00	1986		42	154		63,350
	Sligo							1,099
	Smackover	5,808.00	1971		22	5564	281	1,271,924
WESSON	Nacatoch	1,500.00	1946		15	25808		1,668,599
Ouachita	Buckrange	2,200.00	1947		30	62		2,797,475
	Blossom	2,200.00	1947		30			827,677
	Tokio	2,340.00	1986	1990 TA	19			331,274
	Glen Rose	2,720.00	1945		30	17538	276	1,110,840
	Hill	2,590.00	1945		32	1532		8,890,653
	James Lime	2,960.00	1945		30			325,676
	Hogg	3,100.00	1946		32	46679	1,778	40,289,303
	Sligo	2,595.00	1964		23	395		191,985
	Pettet	3,326.00	1982		22	1504		15,879
	Travis Peak	3,220.00	1946		36	140477	2,244	6,998,393
	Smackover	5,845.00	1967		34	26083		4,174,697
WESSON NORTH	Nacatoch	1,358.00	1952		15			11,426
Ouachita	Buckrange	1,950.00	1966		33			348,087
	Buckrange & Blossom							984
	Blossom	1,986.00	1966		33			
WICKHAM CREEK	Smackover	6,993.00	1974	1997	35	5323		327,007
Union								
WICKHAM CREEK W.	Smackover	7,034.00	1990	1994	33			64,481
Union								
WILDCAT								
Union	Smackover					416	812	3,040
Lafayette	Tokio					2014	552	5,611
WILDWOOD	Travis Peak	3,200.00	1986	1992	41			3,833
Union								
WILKS	Cotton Valley			1952				5,573
Union	Smackover	7,875.00	1977			0		30,432
WILLISVILLE	Nacatoch	1,211.00	1951		14	14901		957,564
Nevada	Blossom	1,946.00	1955		22	1704		263,194
WILLISVILLE S.W.	Nacatoch	1,140.00	1956		14	32383		4,838,227
Nevada	Blossom	1,980.00	1970		18	2285		384,448
	Tokio	2,070.00	1981	1989 TA	15	0		2,031
	Travis Peak	3,260.00	1973	1983	28			5,015
	Smackover					46036	1,337	74,155
	Wedington/Smackover					14356	251	39,326
WILLISVILLE WEST	Nacatoch	1,200.00	1957		15	5114		605,342
Nevada	Tokio	2,135.00	1955		19			255,341
	Hogg	2,977.00	1973	1992	22			193,654
WILMINGTON	Graves	2,768.00	1977		17	1532		37,806
Union	Travis Peak	3,438.00	1958	1971	18			26,142
WILMINGTON SOUTH	Graves	2,822.00	1984	1988				1,224
Union								
WINCHESTER	Meakin	2,635.00	1956		20	2859		1,081,625

North Arkansas Production Data

NORTH ARKANSAS RESERVOIR DATA

FIELD	COUNTY	FORMATION	YEAR OF DISCOVERY	YEAR ABANDONED	2013 ANNUAL GAS MCF	CUMMULATIVE MCF	2014 ANNUAL GAS MCF	CUMMULATIVE MCF
AETNA	Logan	Atoka	1956		6,339,343	727,786,561	5,996,614	733,783,175
	Franklin	Morrow			0	0		0
		Penters			0	0		0
ALMA	Crawford	Atoka	1916		258,744	5,280,905	253,312	5,534,217
		Atoka	1961			37,398,774		37,398,774
		Morrow	1967			0		0
		Uncontrolled				2,337		2,337
ALMA, NORTH	Crawford	Hale	1985		9,011	621,507	9,003	630,510
		Boone	1985			0		0
ALTUS	Franklin	Atoka	1960		735,110	99,578,881	649,595	100,228,476
		Morrow				0		0
		Pitkin				0		0
B-43	Arkansas, Cleburne, Conway, Cross, Faulkner, Independence, Jackson, Lee, Lonoke, Monroe, Phillips, Prairie, St. Francis, Van Buren, White	Fayetteville, Moorefield, Chattanooga			1,031,802,975	4,680,085,900	1,024,583,197	5,704,669,097
	Woodruff, Crawford, Franklin, Johnson, Pope					0		0
B-44 Area	Logan, Sebastian, Yale, Franklin, Scott				57,407,990	470,535,483	51,449,628	521,985,111
BALDWIN	Washington	Sylamore	1985		0	1,601,629	0	1,601,629
BARNEY	Faulkner	Hale	1990	1991	0	87,887	0	87,887
BATES	Scott	Atoka	1982	1986	0	0	0	0
BATSON	Johnson	Atoka	1973		428,123	128,269,911	420,212	128,690,123
		Morrow	1973			0		0
		U/Boone	1974			0		0
BEVERLY	Sebastian	Atoka	1937		0	4,405,109	0	4,405,109
	Franklin					0		0
		Uncontrolled			2,824	120,194	2,112	122,306
BLAIR CREEK	Washington	Sylamore	1986		0	302,901	0	302,901
BLAIR CREEK SOUTH	Washington	Boone	1987		0	1,514,755	0	1,514,755
BLICK	Conway	Atoka	1967	1992	0	23,647	0	23,647
BLOOMER	Sebastian	Atoka	1945	1971	0	158,116	0	158,116
BONANZA	Sebastian	Atoka	1962		958,212	234,540,350	871,978	235,412,328
		Morrow	1962			0		0
		Hunton	1962			0		0
		Penters				0		0
		Pitkin				0		0
BOOGER HOLLOW	Pope	Atoka	1962	1969	0	46,516	0	46,516
BOONEVILLE	Sebastian	Atoka	1958		31,016	204,931,292	23,021	204,954,313

NORTH ARKANSAS RESERVOIR DATA								
FIELD	COUNTY	FORMATION	YEAR OF DISCOVERY	YEAR ABANDONED	2013 ANNUAL GAS MCF	CUMMULATIVE MCF	2014 ANNUAL GAS MCF	CUMMULATIVE MCF
	Logan					0		0
BRENTWOOD	Washington	Wedington	1977		0	1,833,123	0	1,833,123
BROCK CREEK	Logan	Atoka	1992		71,989	1,975,246	67,044	2,042,290
BROCK CREEK (BELL)	Logan	Bell	1991		0	211,408	0	211,408
CANNON CREEK	Madison	Sylamore	1986		0	0	0	0
CAULKSVILLE	Logan	Atoka	1964		775,909	72,738,626	828,686	73,567,312
		Morrow	1967			0		0
CECIL	Franklin	Atoka	1950		7,533,822	895,102,461	7,003,604	902,106,065

NORTH ARKANSAS RESERVOIR DATA								
FIELD	COUNTY	FORMATION	YEAR OF DISCOVERY	YEAR ABANDONED	2013 ANNUAL GAS MCF	CUMMULATIVE MCF	2014 ANNUAL GAS MCF	CUMMULATIVE MCF
	Sebastian	Morrow				0		0
	Crawford	Viola	1967			0		0
		Pitkin				0		0
CENTER RIDGE	Conway	All to base of Boone				23,302		23,302
CHAFFEE ARKOMA UNIT	Franklin	Atoka			149,503	1,508,638	36,350	1,544,988
	Sebastian					0		0
CHAMBERS	Sebastian	Hartshorne Coal			144,274	3,432,582	135,499	3,568,081
CHARLESTON	Franklin	Atoka	1964	1974		38,471		38,471
CHISMVILLE	Logan	Atoka	1959		0	123,572,752	0	123,572,752
CLARKSVILLE	Johnson	Atoka	1921		605,576	91,173,307	602,589	91,775,896
		Atoka	1967			62,115,125		62,115,125
		Morrow	1965			0		0
		Uncontrolled			48,086	1,935,600	49,322	1,984,922
CLAY	White	Arbuckle	1995		0	56,420	0	56,420
CLINTON N. E.	Van Buren	Hale	1997		0	58,789	0	58,789
CNR HARTFORD	Sebastian	Hartshorne Coal			628,707	9,535,594	522,745	10,058,339
COAL HILL	Johnson	Atoka	1958		208,339	38,894,231	186,102	39,080,333
		Morrow				0		0
CYPRESS VALLEY	Conway	Morrow	1985	1987		0		0
DELAWARE	Logan	Atoka	1970		367,648	17,047,730	342,342	17,390,072
DEAN SPRINGS	Conway	Boone	1976			0		0
		Hunton				0		0
DOVER	Pope	Atoka	1959		657,234	113,854,494	638,439	114,492,933
		Morrow				0		0
		Pitkin				0		0
		Batesville				0		0
		Boone				0		0
		Penters				0		0
		Hunton				0		0
		Pre-Penn				0		0
DRIPPING SPRINGS	Crawford	Atoka	1984		0	3,187,872	0	3,187,872
		Morrow	1982			0		0
		Boone	1982			0		0
DYER	Franklin	Atoka	1964		867,469	81,235,047	867,191	82,102,238
		Morrow	1965			0		0
EWING	Sebastian	Atoka	1936		1,645,449	57,764,716	1,520,588	59,285,304
		Atoka	1964			105,597,719		105,597,719
		Morrow	1964			0		0
		Penters	1966			0		0
		Hunton				0		0
		Uncontrolled			392,814	10,185,770	345,362	10,531,132
EXCELSIOR	Sebastian	Atoka	1970		0	16,975,386	0	16,975,386
FERN SPRINGS	Franklin	Wedington	1981		0	5,782	0	5,782
FLETCHER CREEK	Logan	Atoka	1966		0	3,774,761	0	3,774,761
FRIENDSHIP CHURCH	Washington	Boone	1987		0	518,632	0	518,632
		Sylamore	1986			0		0

NORTH ARKANSAS RESERVOIR DATA								
FIELD	COUNTY	FORMATION	YEAR OF DISCOVERY	YEAR ABANDONED	2013 ANNUAL GAS MCF	CUMMULATIVE MCF	2014 ANNUAL GAS MCF	CUMMULATIVE MCF
FROG BAYOU	Crawford	Dunn C	1992		0	334,575	0	334,575
FURGERSON	Pope	Atoka	1965		304,833	60,085,124	296,361	60,381,485
		Morrow				0		0
		Brentwood				0		0
GOOSE CREEK	Washington	Sylamore	1985		0	240,888	0	240,888
GRAGG	Sebastian	Atoka	1955		0	262,554,828	0	262,554,828
GREENBRIER	Faulkner	Morrow	1984		0	143,125	0	143,125
GREENWOOD	Sebastian	Atoka	1969		0	10,052,366	0	10,052,366
GREENWOOD JUNCTIO	Crawford	Atoka	1927		0	42,063	0	42,063

NORTH ARKANSAS RESERVOIR DATA								
FIELD	COUNTY	FORMATION	YEAR OF DISCOVERY	YEAR ABANDONED	2013 ANNUAL GAS MCF	CUMMULATIVE MCF	2014 ANNUAL GAS MCF	CUMMULATIVE MCF
GRIFFIN MOUNTAIN	Conway	Fayetteville			0	914,695	0	914,695
		Boone				0		0
HACKETT	Sebastian	Atoka	1966	1981	0	424,262	0	424,262
HARDT	Washington	Wedington	1987		0	341,926	0	341,926
		Boone	1987			0		0
		Sylamore	1987			0		0
HARGARVILLE	Johnson	Atoka	1968	1974		798,639		798,639
HARTFORD	Sebastian	Hartshorne Coal			520,595	8,779,648	469,692	9,249,340
HAZEL VALLEY	Washington				2,209	807,499	0	807,499
HECTOR	Pope	Atoka	1984		0	1,375,003	0	1,375,003
		Morrow	1984			0		0
HICKORY CREEK	Washington	Wedington			9,826	193,251	17,602	210,853
HIGH OCEAN	Washington	Sylamore	1985		0	177,944	0	177,944
HOLLIS LAKE	Crawford	Atoka	1958		2,586,453	299,079,790	2,487,906	301,567,696
		Morrow	1960			0		0
		St. Peter	1968			0		0
HUNT	Johnson	Atoka	1968		34,740	7,017,754	32,260	7,050,014
HUNTSVILLE	Madison	Sylamore	1976		0	823,539	0	823,539
HURRICANE CREEK	Crawford	Morrow	1981		0	894,344	0	894,344
		Wedington	1981			0		0
		Boone	1981			0		0
JERUSALEM	Conway	Atoka	1956		0	15,205,415	0	15,205,415
JERUSALEM EAST	Conway		1989		0	102,679	0	102,679
JETHRO	Franklin	Atoka	1955		539,161	49,846,112	510,953	50,357,065
		Morrow				0		0
		Boone				0		0
KIBLER	Crawford	Atoka	1915		0	295,413	0	295,413
		Uncontrolled				0		0
KIBLER (DEEP)		Uncontrolled			0	14,961	0	14,961
KIBLER (SHALLOW)		Uncontrolled			17,299	725,544	14,037	739,581
KIBLER-WILLIAMS	Crawford	Atoka	1957		1,715,503	198,129,782	1,585,866	199,715,648
		Morrow	1960			0		0
		Pre-Penn	1962			0		0
		Uncontrolled			111,365	4,281,544	102,383	4,383,927
KNOXVILLE	Pope	Atoka	1958		953,944	96,220,986	808,728	97,029,714
	Johnson					0		0
LAVACA	Sebastian	Atoka	1921		0	2,674,564	0	2,674,564
		Uncontrolled				0		0
LAVACA (DEEP)		Uncontrolled			0	927,737	0	927,737
LEE CREEK	Crawford	Morrow	1985		147,811	5,065,473	122,238	5,187,711
LINVILLE	Johnson	Atoka	1974		46,717	9,269,148	40,436	9,309,584
LITTLE CREEK					0	365,862	0	365,862

NORTH ARKANSAS RESERVOIR DATA								
FIELD	COUNTY	FORMATION	YEAR OF DISCOVERY	YEAR ABANDONED	2013 ANNUAL GAS MCF	CUMMULATIVE MCF	2014 ANNUAL GAS MCF	CUMMULATIVE MCF
		Morrow	1974			0		0
LOCKE	Crawford	Boone	1979			0		0
LONE ELM	Franklin	Atoka	1950		645,965	142,556,412	576,053	143,132,465
		Morrow				0		0
		Pre-Penn				0		0
LUDWIG	Johnson	Atoka	1959		468,077	54,009,226	367,407	54,376,633
		Morrow				0		0
LUTHERVILLE	Johnson	Boone	1978		0	83,871	0	83,871
MANSFIELD	Sebastian	Atoka	1901		0	55,516,723	0	55,516,723
		Atoka	1965			0		0
		Uncontrolled				5,713,728		5,713,728
MARTINVILLE	Faulkner	Atoka	1980	1985	0	24,459,826	0	24,459,826
		Morrow				37,885		37,885
MASSARD	Crawford	Atoka	1951		3,174,297	368,536,630	2,685,705	371,222,335
	Sebastian	Morrow	1957			0		0
		Penters	1963			0		0
		Hunton	1962			0		0
		Boone				0		0
		Uncontrolled			52,930	2,078,467	49,815	2,128,282
MASSARD PRAIRIE	Sebastian	Atoka	1904		0	38,991,724	0	38,991,724
MIKES CREEK	Johnson	Morrow	1985		0	0	0	0
		Boone	1985			0		0
MINERAL SPRINGS	Washington				0	0	0	0
MORELAND	Pope	Atoka	1954		415,039	104,360,980	434,193	104,795,173
		Morrow	1956			0		0
MT. NEBO	Yell	Atoka	1959	1960	0	0	0	0
NATURAL DAM	Crawford	Atoka	1978		2,337	50,767	1,263	52,030
NEW HOPE	Pope	Atoka	1961		169,848	16,985,336	144,120	17,129,456
		Morrow				0		0
NEW QUITMAN					0	283,050	0	283,050
OAK GROVE	Pope	Atoka			236,180	31,325,476	225,857	31,551,333
		Penters	1975			0		0
OLD HICKORY	Conway	Atoka	1958	1985	0	493,258	0	493,258
OZARK	Franklin	Atoka	1930		222,884	10,417,298	238,534	10,655,832
		Morrow	1961			0		0
OZARK (SHALLOW)					4,359	843,665	3,133	846,798
OZARK (DEEP)					0	4,758,812	0	4,758,812
OZARK (ANDERSON)					0	1,782,738	0	1,782,738
OZARK (NEW)					0	27,881,096	0	27,881,096
OZONE	Johnson	Atoka	1974		170,847	17,206,377	153,532	17,359,909
		Morrow				0		0
		Pitkin				0		0
		Boone	1974			0		0
PARADISE	Franklin	Morrow	1961		0	0	0	0

NORTH ARKANSAS RESERVOIR DATA								
FIELD	COUNTY	FORMATION	YEAR OF DISCOVERY	YEAR ABANDONED	2013 ANNUAL GAS MCF	CUMMULATIVE MCF	2014 ANNUAL GAS MCF	CUMMULATIVE MCF
PARIS	Logan	Atoka	1966		394,619	34,997,639	351,178	35,348,817
		Morrow				0		0
PEARSON	Cleburne	Morrow	1981	1983		0		0
PETER PENDER	Franklin	Atoka	1962		1,913,517	164,213,469	1,742,603	165,956,072
		Morrow	1959			0		0
PINE RIDGE	Logan	Atoka	1986		21,136	932,284	23,392	955,676
PINEY CREEK					0	59,261	0	59,261
POSSOMTROT	Franklin	Atoka	1966		111,627	21,569,726	102,292	21,672,018
		Morrow	1966			0		0
Poteau Mountain	Sebastian	Hartshorne Coal	2009		6,393	64,835	7,780	72,615
PRAIRIE VIEW	Logan	Atoka	1954		257,738	9,808,727	247,002	10,055,729
		Morrow				0		0
QUITMAN	Cleburne	Atoka	1959	1992	0	318,185	0	318,185
QUITMAN, NEW	Cleburne	Fayetteville			0	0	0	0
	Faulkner					0		0
RENA	Crawford	Hale & Boone			4,986	293,865	0	293,865
RICH HOLLOW	Washington	Wedington	1990		424	144,124	0	144,124
RICH MOUNTAIN					0	1,748,896	0	1,748,896
RICH MOUNTAIN WEST	Logan				0	0		0
ROCK CREEK	Franklin	Atoka	1959		91,923	20,277,445	80,867	20,358,312
		Morrow				0		0
		Wedington				0		0
ROSS	Johnson	Atoka	1959		562,036	155,534,452	515,429	156,049,881
	Pope	Morrow				0		0
RUDY	Crawford	Atoka	1949		31,552	5,980,954	31,453	6,012,407
		Morrow				0		0
		Boone				0		0
SCOTLAND	Van Buren	Fayetteville			0	1,273,654	0	1,273,654
SCOTTSVILLE	Pope	Atoka	1960		0	163,229	0	163,229
SCRANTON	Johnson	Atoka	1960		1,000,636	90,402,216	942,277	91,344,493
		Morrow				0		0
SECTION 10	Crawford	Atoka	1920			3,804,847		3,804,847
		Uncontrolled			43,588	801,658	51,657	853,315
SHIBLEY	Crawford	Atoka	1927			9,793,741		9,793,741
		Uncontrolled			158,380	3,144,870	150,093	3,294,963
SILEX	Pope	Atoka	1942		374,426	47,747,931	300,855	48,048,786
		Morrow				0		0
		Uncontrolled			0	170,540		170,540
SLAYTONVILLE	Sebastian	Atoka	1971		0	2,631,562	0	2,631,562
SMOKEY ROAD					0	142,935	0	142,935
SPADRA	Johnson	Atoka	1954		1,234,563	401,683,209	1,162,226	402,845,435
	Logan	Morrow				0		0
ST. VINCENT	Conway	Morrow	1976	1983	0	0		0
SUGAR GROVE	Logan	Atoka	1966	1976	0	0		0
Sugarloaf Mountain	Sebastian	Hartshorne Coal, Lower	2007		336,859	3,907,923	296,080	4,204,003

NORTH ARKANSAS RESERVOIR DATA								
FIELD	COUNTY	FORMATION	YEAR OF DISCOVERY	YEAR ABANDONED	2013 ANNUAL GAS MCF	CUMMULATIVE MCF	2014 ANNUAL GAS MCF	CUMMULATIVE MCF
SUNSET	Washington	Wedington	1988		1,023	121,122	0	121,122
TATES ISLAND	Pope	Atoka	1929	1985 TA	0	8,253,135	0	8,253,135
TUCKS CHAPEL	Benton	Everton	1967	1968	0	0	0	0
UNION CITY	Johnson	Atoka	1958		662,605	132,153,597	589,003	132,742,600
		Morrow	1958			0		0
URSULA	Sebastian	Atoka	1963		243,858	21,507,913	236,122	21,744,035
		Uncontrolled			7,485	564,200	6,143	570,343
VESTA	Franklin	Atoka	1932		768,877	20,356,153	616,913	20,973,066
		Atoka	1961			23,574,350		23,574,350
		Morrow				0		0
		Uncontrolled			14,936	688,382	9,172	697,554
WATALULA	Franklin	Atoka	1953		41,022	5,141,432	40,751	5,182,183
WAVELAND	Yell	Atoka	1966		0	58,846,018	0	58,846,018
WEDINGTON	Washington	Sylamore	1983		0	849,033	0	849,033
WEST FORK	Washington	Sylamore	1953		0	1,332,832	0	1,332,832
WHITE OAK	Franklin	Atoka	1943		2,238,293	297,188,870	1,934,777	299,123,647
		Morrow	1958			0		0
		Boone				0		0
		Penters				0		0
WHITE ROCK MOUNTAIN	Franklin	Morrow	1984		0	184,697	0	184,697
		Wedington				14,201		14,201
WILLIAMS	Crawford	Atoka	1918			50,914,022		50,914,022
		Uncontrolled				0		0
WILLIAMS DEEP		Uncontrolled			100,306	2,997,252	86,360	3,083,612
WILLIAMS SHALLOW					0	52,771	0	52,771
WINSLOW	Washington	Wedington	1987		8,315	2,573,735	0	2,573,735
WITCHERVILLE	Sebastian	Atoka	1970		0	35,013,800	0	35,013,800
WONDERVIEW	Conway	Fayetteville			0	25,872	0	25,872
WYMAN	Washington	Sylamore	1985		0	0	0	0
						0		0
TOTAL					1,135,254,509	11,902,191,631	1,118,297,034	13,020,488,665

**Arkansas Brine Production
1979 – 2014**

YEAR	BARRELS
1979.....	113,592,673
1980.....	183,875,440
1981.....	191,624,074
1982.....	189,407,705
1983.....	201,231,245
1984.....	235,726,972
1985.....	208,648,907
1986.....	203,240,401
1987.....	205,044,975
1988.....	222,819,711
1989.....	235,804,261
1990.....	241,020,532
1991.....	235,988,715
1992.....	231,928,936
1993.....	237,747,546
1994.....	275,331,857
1995.....	311,439,117
1996.....	324,756,326
1997.....	352,622,166
1998.....	324,727,490
1999.....	301,514,302
2000.....	321,518,739
2001.....	309,000,330
2002.....	322,563,813
2003.....	301,118,442
2004.....	326,469,195
2005.....	251,628,561
2006.....	293,118,746
2007.....	285,385,870
2008.....	286,724,347
2009.....	175,031,787
2010.....	276,917,124
2011.....	289,818,680
2012.....	265,326,652
2013.....	267,503,967
2014.....	271,647,658

**Brine Production
2014**

FIELD	BARRELS
Atlanta.....	3,442,604
Big Creek	1,565,556
Burns Pond.....	10,047,670
Cairo.....	9,062,671
Catesville.....	33,936,992
Hibank.....	10,750,114
Hogg.....	2,110,446
Kerlin	3,915,495
Kilgore Lodge	40,866,721
Lisbon	9,734,747
Magnolia	16,471,560
Marysville	45,647,905
Shuler East	5,194,870
Village.....	41,403,893
Warnock Springs.....	23,241,362
Wilks	14,255,052
TOTAL	271,647,658